

AURKA

Purified Mouse Monoclonal Antibody
Catalog # AO2568a

Product Information

Application	WB, IHC, ICC, E
Primary Accession	O14965
Reactivity	Human, Mouse
Host	Mouse
Clonality	Monoclonal
Clone Names	4H5A8
Isotype	Mouse IgG1
Calculated MW	45823
Immunogen	Purified recombinant fragment of human AURKA (AA: 268-404) expressed in E. Coli.
Formulation	Purified antibody in PBS with 0.05% sodium azide

Additional Information

Gene ID	6790
Other Names	AIK; ARK1; AURA; BTAK; STK6; STK7; STK15; PPP1R47
Dilution	WB~~ 1/500 - 1/2000 IHC~~1:100~500 ICC~~N/A E~~ 1/10000
Storage	Maintain refrigerated at 2-8°C for up to 6 months. For long term storage store at -20°C in small aliquots to prevent freeze-thaw cycles.
Precautions	AURKA is for research use only and not for use in diagnostic or therapeutic procedures.

Protein Information

Name	AURKA (HGNC:11393)
Function	Mitotic serine/threonine kinase that contributes to the regulation of cell cycle progression (PubMed: 11039908 , PubMed: 12390251 , PubMed: 17125279 , PubMed: 17360485 , PubMed: 18615013 , PubMed: 26246606). Associates with the centrosome and the spindle microtubules during mitosis and plays a critical role in various mitotic events including the establishment of mitotic spindle, centrosome duplication, centrosome separation as well as maturation, chromosomal alignment, spindle assembly checkpoint, and cytokinesis (PubMed: 14523000 , PubMed: 26246606). Required for normal spindle positioning during mitosis and for the localization of NUMA1 and

DCTN1 to the cell cortex during metaphase (PubMed:[27335426](#)). Required for initial activation of CDK1 at centrosomes (PubMed:[13678582](#), PubMed:[15128871](#)). Phosphorylates numerous target proteins, including ARHGEF2, BORA, BRCA1, CDC25B, DLGP5, HDAC6, KIF2A, LATS2, NDEL1, PARD3, PPP1R2, PLK1, RASSF1, TACC3, p53/TP53 and TPX2 (PubMed:[11551964](#), PubMed:[14702041](#), PubMed:[15128871](#), PubMed:[15147269](#), PubMed:[15987997](#), PubMed:[17604723](#), PubMed:[18056443](#), PubMed:[18615013](#)). Phosphorylates MCRS1 which is required for MCRS1- mediated kinetochore fiber assembly and mitotic progression (PubMed:[27192185](#)). Regulates KIF2A tubulin depolymerase activity (PubMed:[19351716](#)). Important for microtubule formation and/or stabilization (PubMed:[18056443](#)). Required for normal axon formation (PubMed:[19812038](#)). Plays a role in microtubule remodeling during neurite extension (PubMed:[19668197](#)). Also acts as a key regulatory component of the p53/TP53 pathway, and particularly the checkpoint- response pathways critical for oncogenic transformation of cells, by phosphorylating and destabilizing p53/TP53 (PubMed:[14702041](#)). Phosphorylates its own inhibitors, the protein phosphatase type 1 (PP1) isoforms, to inhibit their activity (PubMed:[11551964](#)). Inhibits cilia outgrowth (By similarity). Required for cilia disassembly via phosphorylation of HDAC6 and subsequent deacetylation of alpha-tubulin (PubMed:[17604723](#), PubMed:[20643351](#)). Regulates protein levels of the anti-apoptosis protein BIRC5 by suppressing the expression of the SCF(FBXL7) E3 ubiquitin-protein ligase substrate adapter FBXL7 through the phosphorylation of the transcription factor FOXP1 (PubMed:[28218735](#)).

Cellular Location

Cytoplasm, cytoskeleton, microtubule organizing center, centrosome. Cytoplasm, cytoskeleton, spindle pole. Cytoplasm, cytoskeleton, microtubule organizing center, centrosome, centriole {ECO:0000250|UniProtKB:P97477}. Cell projection, neuron projection {ECO:0000250|UniProtKB:P97477}. Cell projection, cilium. Cytoplasm, cytoskeleton, cilium basal body. Basolateral cell membrane {ECO:0000250|UniProtKB:F1PNY0}. Note=Detected at the neurite hillock in developing neurons (By similarity). Localizes at the centrosome in mitotic cells from early prophase until telophase, but also localizes to the spindle pole MTs from prophase to anaphase (PubMed:17229885, PubMed:21225229, PubMed:9606188). Colocalized with SIRT2 at centrosome (PubMed:22014574). Moves to the midbody during both telophase and cytokinesis (PubMed:17726514). Associates with both the pericentriolar material (PCM) and centrioles (PubMed:22014574). The localization to the spindle poles is regulated by AAAS (PubMed:26246606) {ECO:0000250|UniProtKB:P97477, ECO:0000269|PubMed:17229885, ECO:0000269|PubMed:17726514, ECO:0000269|PubMed:21225229, ECO:0000269|PubMed:22014574, ECO:0000269|PubMed:26246606, ECO:0000269|PubMed:9606188}

Tissue Location

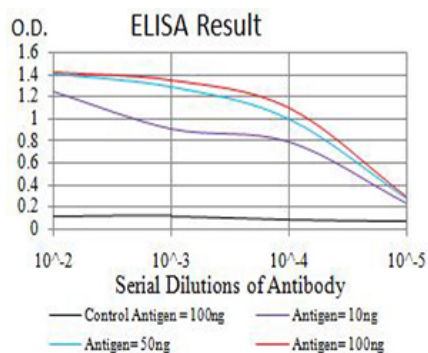
Highly expressed in testis and weakly in skeletal muscle, thymus and spleen. Also highly expressed in colon, ovarian, prostate, neuroblastoma, breast and cervical cancer cell lines

References

1.Mol Cancer Ther. 2015 Dec;14(12):2753-61.2.Oncol Res Treat. 2015;38(9):442-7.

Images

Figure 1:Black line: Control Antigen (100 ng);Purple line:



Antigen (10ng); Blue line: Antigen (50 ng); Red line:Antigen (100 ng)

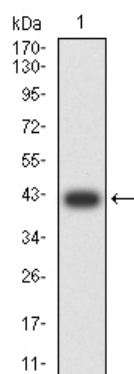


Figure 2:Western blot analysis using AURKA mAb against human AURKA (AA: 268-404) recombinant protein. (Expected MW is 41.5 kDa)

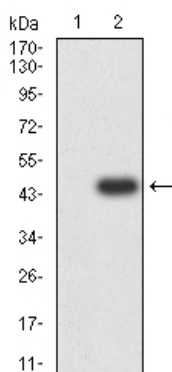


Figure 3:Western blot analysis using AURKA mAb against HEK293 (1) and AURKA (AA: 268-404)-hIgGFc transfected HEK293 (2) cell lysate.

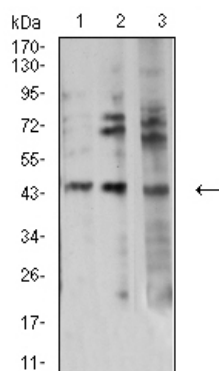


Figure 4:Western blot analysis using AURKA mouse mAb against HEK293 (1), PC-12 (2), and HT-29 (3) cell lysate.

Please note: All products are 'FOR RESEARCH USE ONLY. NOT FOR USE IN DIAGNOSTIC OR THERAPEUTIC PROCEDURES'.