

GRM3

Purified Mouse Monoclonal Antibody
Catalog # AO2585a

Product Information

Application	WB, IHC, ICC, E
Primary Accession	Q14832
Reactivity	Human
Host	Mouse
Clonality	Monoclonal
Clone Names	7A5A6
Isotype	Mouse IgG2a
Calculated MW	98879
Immunogen	Purified recombinant fragment of human GRM3 (AA: extra 433-576) expressed in E. Coli.
Formulation	Purified antibody in PBS with 0.05% sodium azide

Additional Information

Gene ID	2913
Other Names	GLUR3; mGlu3; GPRC1C; MGLUR3
Dilution	WB~~ 1/500 - 1/2000 IHC~~ 1/200 - 1/1000 ICC~~ 1/200 - 1/1000 E~~ 1/10000
Storage	Maintain refrigerated at 2-8°C for up to 6 months. For long term storage store at -20°C in small aliquots to prevent freeze-thaw cycles.
Precautions	GRM3 is for research use only and not for use in diagnostic or therapeutic procedures.

Protein Information

Name	GRM3
Synonyms	GPRC1C, MGLUR3
Function	G-protein coupled receptor for glutamate. Ligand binding causes a conformation change that triggers signaling via guanine nucleotide-binding proteins (G proteins) and modulates the activity of down-stream effectors. Signaling inhibits adenylate cyclase activity.
Cellular Location	Cell membrane; Multi-pass membrane protein

Tissue Location	Detected in brain cortex, thalamus, subthalamic nucleus, substantia nigra, hypothalamus, hippocampus, corpus callosum, caudate nucleus and amygdala.
------------------------	--

References

1.Prog Neuropsychopharmacol Biol Psychiatry. 2015 Oct 1;62:14-21.2.Cell Mol Biol (Noisy-le-grand). 2014 Sep 6;60(2):42-9.

Images

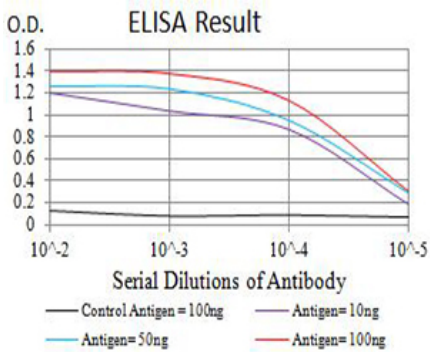


Figure 1:Black line: Control Antigen (100 ng);Purple line: Antigen (10ng); Blue line: Antigen (50 ng); Red line:Antigen (100 ng)

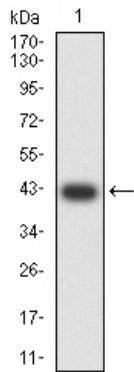


Figure 2:Western blot analysis using GRM3 mAb against human GRM3 (AA: extra 433-576) recombinant protein. (Expected MW is 42.4 kDa)

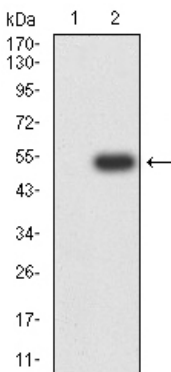


Figure 3:Western blot analysis using GRM3 mAb against HEK293 (1) and GRM3 (AA: extra 433-576)-hIgGFc transfected HEK293 (2) cell lysate.

Figure 5:Flow cytometric analysis of SH-SY5Y cells using GRM3 mouse mAb (green) and negative control (red).

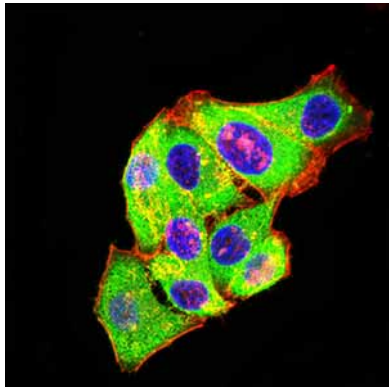
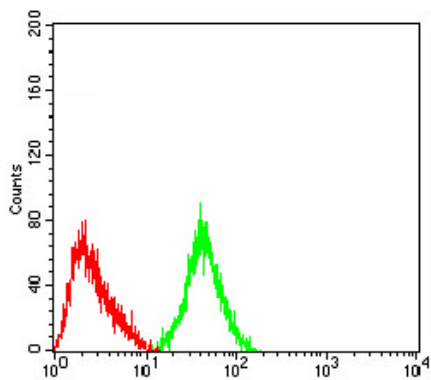


Figure 4: Immunofluorescence analysis of HeLa cells using GRM3 mouse mAb (green). Blue: DRAQ5 fluorescent DNA dye. Red: Actin filaments have been labeled with Alexa Fluor-555 phalloidin. Secondary antibody from Fisher (Cat#: 35503)

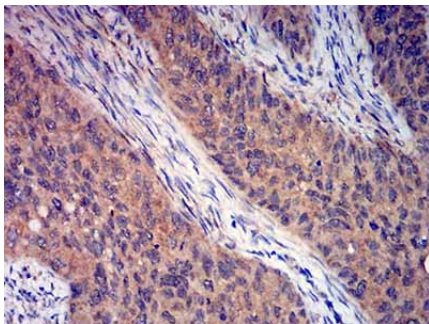


Figure 6: Immunohistochemical analysis of paraffin-embedded cervical cancer tissues using GRM3 mouse mAb with DAB staining.

Please note: All products are 'FOR RESEARCH USE ONLY. NOT FOR USE IN DIAGNOSTIC OR THERAPEUTIC PROCEDURES'.