

# BCL2L2

Purified Mouse Monoclonal Antibody  
Catalog # AO2612a

## Product Information

---

<b>Application</b>	WB, IHC, ICC, E
<b>Primary Accession</b>	<a href="#">Q92843</a>
<b>Reactivity</b>	Human
<b>Host</b>	Mouse
<b>Clonality</b>	Monoclonal
<b>Clone Names</b>	4G12E6
<b>Isotype</b>	Mouse IgG2a
<b>Calculated MW</b>	20746
<b>Immunogen</b>	Purified recombinant fragment of human BCL2L2 (AA: 6-118) expressed in E. Coli.
<b>Formulation</b>	Purified antibody in PBS with 0.05% sodium azide

## Additional Information

---

<b>Gene ID</b>	599
<b>Other Names</b>	BCLW; BCL-W; PPP1R51; BCL2-L-2
<b>Dilution</b>	WB~~ 1/500 - 1/2000 IHC~~1:100~500 ICC~~N/A E~~ 1/10000
<b>Storage</b>	Maintain refrigerated at 2-8°C for up to 6 months. For long term storage store at -20°C in small aliquots to prevent freeze-thaw cycles.
<b>Precautions</b>	BCL2L2 is for research use only and not for use in diagnostic or therapeutic procedures.

## Protein Information

---

<b>Name</b>	BCL2L2
<b>Synonyms</b>	BCLW, KIAA0271
<b>Function</b>	Promotes cell survival. Blocks dexamethasone-induced apoptosis. Mediates survival of postmitotic Sertoli cells by suppressing death-promoting activity of BAX.
<b>Cellular Location</b>	Mitochondrion membrane; Peripheral membrane protein. Note=Loosely associated with the mitochondrial membrane in healthy cells. During apoptosis, tightly bound to the membrane

## Tissue Location

Expressed (at protein level) in a wide range of tissues with highest levels in brain, spinal cord, testis, pancreas, heart, spleen and mammary glands. Moderate levels found in thymus, ovary and small intestine. Not detected in salivary gland, muscle or liver. Also expressed in cell lines of myeloid, fibroblast and epithelial origin. Not detected in most lymphoid cell lines

## References

1. Med Sci Monit. 2016 Nov 1;22:4139-4145. 2. Food Chem Toxicol. 2010 Aug-Sep;48(8-9):2259-64.

## Images

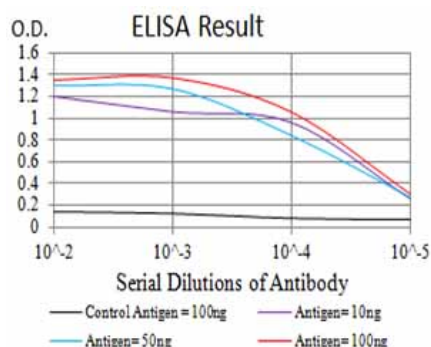


Figure 1: Black line: Control Antigen (100 ng); Purple line: Antigen (10ng); Blue line: Antigen (50 ng); Red line: Antigen (100 ng)

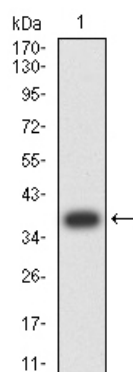


Figure 2: Western blot analysis using BCL2L2 mAb against human BCL2L2 (AA: 6-118) recombinant protein. (Expected MW is 38.2 kDa)

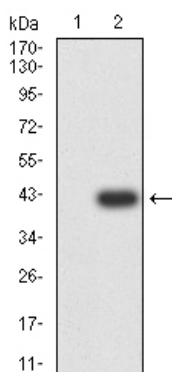


Figure 3: Western blot analysis using BCL2L2 mAb against HEK293 (1) and BCL2L2 (AA: 6-118)-hIgGfc transfected HEK293 (2) cell lysate.

Figure 4: Western blot analysis using BCL2L2 mouse mAb against HCT116 (1), LOVO (2), SW480 (3), and HL-60 (4) cell lysate.

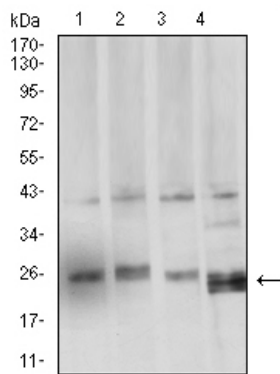


Figure 6:Flow cytometric analysis of HeLa cells using BCL2L2 mouse mAb (green) and negative control (red).

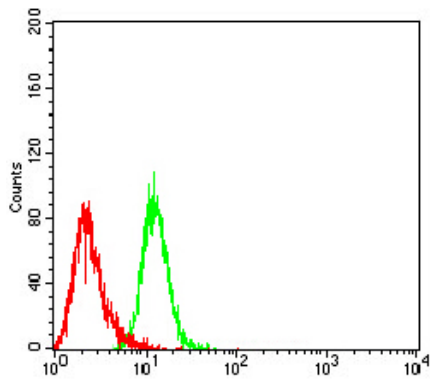


Figure 7:Flow cytometric analysis of K562 cells using BCL2L2 mouse mAb (green) and negative control (red).

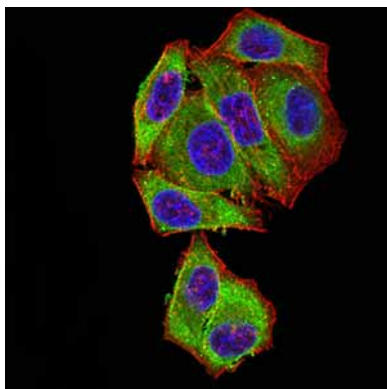
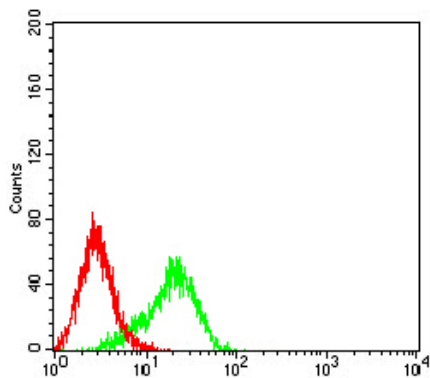


Figure 5:Immunofluorescence analysis of HeLa cells using BCL2L2 mouse mAb (green). Blue: DRAQ5 fluorescent DNA dye. Red: Actin filaments have been labeled with Alexa Fluor- 555 phalloidin. Secondary antibody from Fisher (Cat#: 35503)

Please note: All products are 'FOR RESEARCH USE ONLY. NOT FOR USE IN DIAGNOSTIC OR THERAPEUTIC PROCEDURES'.