

GRM1

Purified Mouse Monoclonal Antibody
Catalog # AO2613a

Product Information

Application	WB, IHC, ICC, E
Primary Accession	Q13255
Reactivity	Human
Host	Mouse
Clonality	Monoclonal
Clone Names	5E12D8
Isotype	Mouse IgG1
Calculated MW	132357
Immunogen	Purified recombinant fragment of human GRM1 (AA: extra 387-486) expressed in E. Coli.
Formulation	Purified antibody in PBS with 0.05% sodium azide

Additional Information

Gene ID	2911
Other Names	MGLU1; GPRC1A; MGLUR1; SCAR13; PPP1R85
Dilution	WB~~ 1/500 - 1/2000 IHC~~1:100~500 ICC~~N/A E~~ 1/10000
Storage	Maintain refrigerated at 2-8°C for up to 6 months. For long term storage store at -20°C in small aliquots to prevent freeze-thaw cycles.
Precautions	GRM1 is for research use only and not for use in diagnostic or therapeutic procedures.

Protein Information

Name	GRM1
Synonyms	GPRC1A, MGLUR1
Function	G-protein coupled receptor for glutamate. Ligand binding causes a conformation change that triggers signaling via guanine nucleotide-binding proteins (G proteins) and modulates the activity of down-stream effectors. Signaling activates a phosphatidylinositol- calcium second messenger system. May participate in the central action of glutamate in the CNS, such as long-term potentiation in the hippocampus and long-term depression in the cerebellum (PubMed: 24603153 , PubMed: 28886343 , PubMed: 7476890). May

function in the light response in the retina (By similarity). Induces GRID1 and GRID2 cation-channel activation via GNAQ-PLC-PKC pathway in dopaminergic neurons and cerebellar Purkinje cell, respectively (PubMed:[24357660](#), PubMed:[27276689](#)).

Cellular Location

Cell membrane; Multi-pass membrane protein. Postsynaptic cell membrane; Multi-pass membrane protein. Cell projection, dendrite {ECO:0000250|UniProtKB:P97772}. Note=Located in dendrioles, small dendrites that makes up a brush structure found as the terminal specialization of a dendrite of a unipolar brush cell {ECO:0000250|UniProtKB:P97772}

Tissue Location

Detected in brain..

References

1.Breast Cancer Res Treat. 2015 May;151(1):57-73.2.PLoS One. 2013 Jul 26;8(7):e69851.

Images

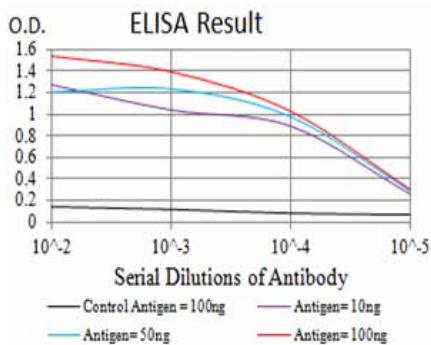


Figure 1:Black line: Control Antigen (100 ng);Purple line: Antigen (10ng); Blue line: Antigen (50 ng); Red line:Antigen (100 ng)

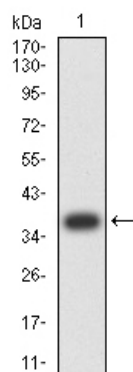


Figure 2:Western blot analysis using GRM1 mAb against human GRM1 (AA: 387-486) recombinant protein. (Expected MW is 37.1 kDa)

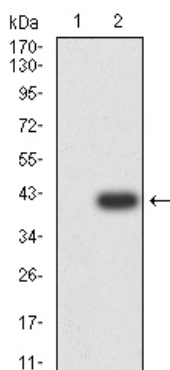


Figure 3:Western blot analysis using GRM1 mAb against HEK293 (1) and GRM1 (AA: 387-486)-hIgGFc transfected HEK293 (2) cell lysate.

Please note: All products are 'FOR RESEARCH USE ONLY. NOT FOR USE IN DIAGNOSTIC OR THERAPEUTIC PROCEDURES'.