

# GRM6

Purified Mouse Monoclonal Antibody  
Catalog # AO2615a

## Product Information

---

<b>Application</b>	WB, IHC, ICC, E
<b>Primary Accession</b>	<a href="#">O15303</a>
<b>Reactivity</b>	Human
<b>Host</b>	Mouse
<b>Clonality</b>	Monoclonal
<b>Clone Names</b>	4C11E12
<b>Isotype</b>	Mouse IgG1
<b>Calculated MW</b>	95468
<b>Immunogen</b>	Purified recombinant fragment of human GRM6 (AA: extra 480-585) expressed in E. Coli.
<b>Formulation</b>	Purified antibody in PBS with 0.05% sodium azide

## Additional Information

---

<b>Gene ID</b>	2916
<b>Other Names</b>	mGlu6; CSNB1B; GPRC1F; MGLUR6
<b>Dilution</b>	WB~~ 1/500 - 1/2000 IHC~~1:100~500 ICC~~N/A E~~ 1/10000
<b>Storage</b>	Maintain refrigerated at 2-8°C for up to 6 months. For long term storage store at -20°C in small aliquots to prevent freeze-thaw cycles.
<b>Precautions</b>	GRM6 is for research use only and not for use in diagnostic or therapeutic procedures.

## Protein Information

---

<b>Name</b>	GRM6
<b>Synonyms</b>	GPRC1F, MGLUR6
<b>Function</b>	G-protein coupled receptor for glutamate. Ligand binding causes a conformation change that triggers signaling via guanine nucleotide-binding proteins (G proteins) and modulates the activity of down-stream effectors, such as adenylate cyclase. Signaling inhibits adenylate cyclase activity (By similarity). Signaling stimulates TRPM1 channel activity and Ca(2+) uptake. Required for normal vision.

<b>Cellular Location</b>	Cell membrane; Multi-pass membrane protein. Endoplasmic reticulum membrane; Multi-pass membrane protein. Golgi apparatus membrane; Multi-pass membrane protein. Cell projection, dendrite Note=Subject to trafficking from the endoplasmic reticulum to the Golgi apparatus and then to the cell membrane
<b>Tissue Location</b>	Detected in melanocytes.

## References

1.Pigment Cell Melanoma Res. 2013 May;26(3):348-56.2.Mol Vis. 2009 Oct 19;15:2094-100.

## Images

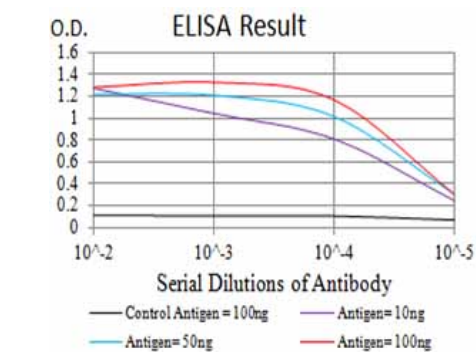


Figure 1:Black line: Control Antigen (100 ng);Purple line: Antigen (10ng); Blue line: Antigen (50 ng); Red line:Antigen (100 ng)

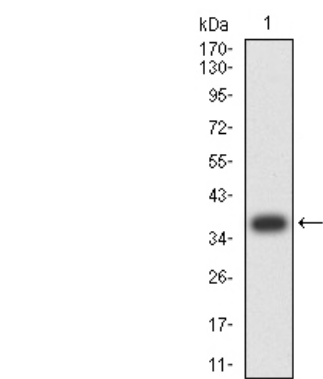


Figure 2:Western blot analysis using GRM6 mAb against human GRM6 (AA: extra 480-585) recombinant protein. (Expected MW is 37.5 kDa)

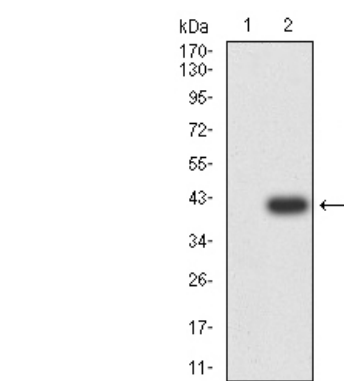


Figure 3:Western blot analysis using GRM6 mAb against HEK293 (1) and GRM6 (AA: extra 480-585)-hIgGfc transfected HEK293 (2) cell lysate.

Please note: All products are 'FOR RESEARCH USE ONLY. NOT FOR USE IN DIAGNOSTIC OR THERAPEUTIC PROCEDURES'.