

# P2RY1

Purified Mouse Monoclonal Antibody  
Catalog # AO2649a

## Product Information

---

<b>Application</b>	WB, IHC, ICC, E
<b>Primary Accession</b>	<a href="#">P47900</a>
<b>Reactivity</b>	Human, Rat
<b>Host</b>	Mouse
<b>Clonality</b>	Monoclonal
<b>Clone Names</b>	4G5D6
<b>Isotype</b>	Mouse IgG2b
<b>Calculated MW</b>	42072
<b>Immunogen</b>	Purified recombinant fragment of human P2RY1 (AA: extra mix) expressed in E. Coli.
<b>Formulation</b>	Purified antibody in PBS with 0.05% sodium azide

## Additional Information

---

<b>Gene ID</b>	5028
<b>Other Names</b>	P2Y1
<b>Dilution</b>	WB~~ 1/500 - 1/2000 IHC~~1:100~500 ICC~~N/A E~~ 1/10000
<b>Storage</b>	Maintain refrigerated at 2-8°C for up to 6 months. For long term storage store at -20°C in small aliquots to prevent freeze-thaw cycles.
<b>Precautions</b>	P2RY1 is for research use only and not for use in diagnostic or therapeutic procedures.

## Protein Information

---

<b>Name</b>	P2RY1
<b>Function</b>	Receptor for extracellular adenine nucleotides such as ADP (PubMed: <a href="#">25822790</a> , PubMed: <a href="#">9038354</a> , PubMed: <a href="#">9442040</a> ). In platelets, binding to ADP leads to mobilization of intracellular calcium ions via activation of phospholipase C, a change in platelet shape, and ultimately platelet aggregation (PubMed: <a href="#">9442040</a> ).
<b>Cellular Location</b>	Cell membrane; Multi-pass membrane protein

References

1.Nature. 2015 Apr 16;520(7547):317-21.2.Biochem Pharmacol. 2011 Aug 15;82(4):418-25.

Images

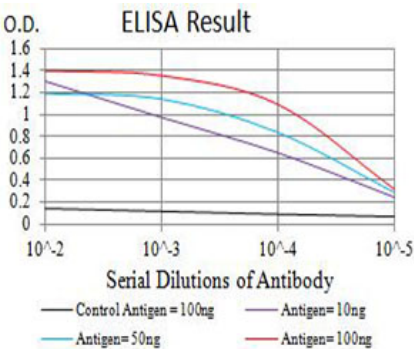


Figure 1:Black line: Control Antigen (100 ng);Purple line: Antigen (10ng); Blue line: Antigen (50 ng); Red line:Antigen (100 ng)

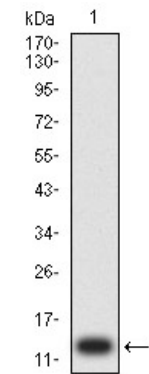


Figure 2:Western blot analysis using P2RY1 mAb against human P2RY1 (AA: extra mix) recombinant protein. (Expected MW is 13 kDa)

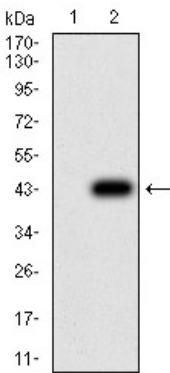


Figure 3:Western blot analysis using P2RY1 mAb against HEK293 (1) and P2RY1 (AA: extra mix)-hIgGfc transfected HEK293 (2) cell lysate.

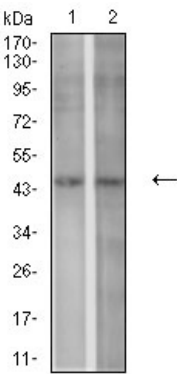


Figure 4:Western blot analysis using P2RY1 mouse mAb against SPC-A-1 (1) and C6 (2) cell lysate.

Figure 5:Flow cytometric analysis of Hela cells using P2RY1 mouse mAb (green) and negative control (red).

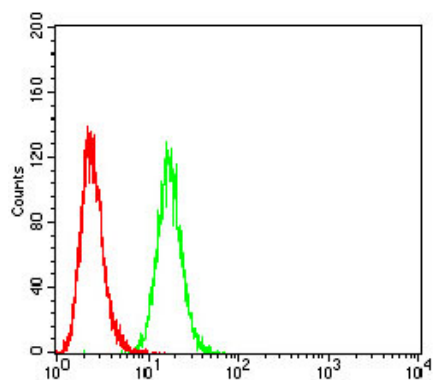


Figure 6:Flow cytometric analysis of K562 cells using P2RY1 mouse mAb (green) and negative control (red).

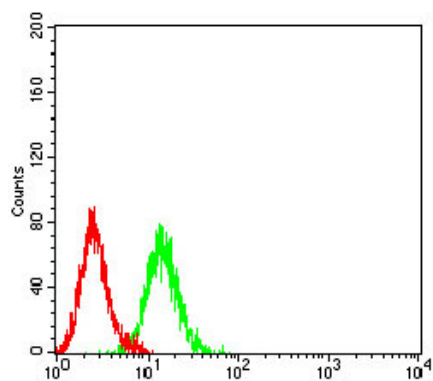
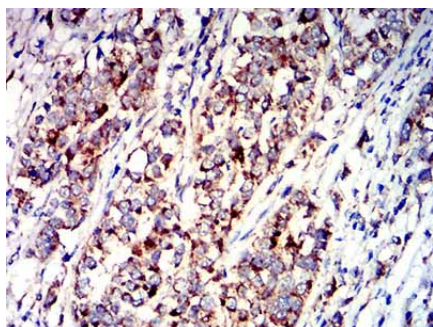


Figure 7:Immunohistochemical analysis of paraffin-embedded bladder cancer tissues using P2RY1 mouse mAb with DAB staining.



Please note: All products are 'FOR RESEARCH USE ONLY. NOT FOR USE IN DIAGNOSTIC OR THERAPEUTIC PROCEDURES'.