

ELANE

Purified Mouse Monoclonal Antibody
Catalog # AO2660a

Product Information

Application	WB, IHC, ICC, E
Primary Accession	P08246
Reactivity	Human, Monkey
Host	Mouse
Clonality	Monoclonal
Clone Names	6B6B10
Isotype	Mouse IgG1
Calculated MW	28518
Immunogen	Purified recombinant fragment of human ELANE (AA: 140-267) expressed in E. Coli.
Formulation	Purified antibody in PBS with 0.05% sodium azide

Additional Information

Gene ID	1991
Other Names	GE; NE; HLE; HNE; ELA2; SCN1; PMN-E
Dilution	WB~~ 1/500 - 1/2000 IHC~~ 1/200 - 1/1000 ICC~~N/A E~~ 1/10000
Storage	Maintain refrigerated at 2-8°C for up to 6 months. For long term storage store at -20°C in small aliquots to prevent freeze-thaw cycles.
Precautions	ELANE is for research use only and not for use in diagnostic or therapeutic procedures.

Protein Information

Name	ELANE
Synonyms	ELA2
Function	Serine protease that modifies the functions of natural killer cells, monocytes and granulocytes. Inhibits C5a-dependent neutrophil enzyme release and chemotaxis (PubMed: 15140022). Promotes cleavage of GSDMB, thereby inhibiting pyroptosis (PubMed: 36899106). Promotes blood coagulation (PubMed: 20676107). Through the activation of the platelet fibrinogen receptor integrin alpha-IIb/beta-3, potentiates platelet aggregation induced by a threshold concentration of cathepsin G (CTSG) (PubMed: 25211214 ,

PubMed:[9111081](#)). Cleaves and thus inactivates tissue factor pathway inhibitor (TFPI) (PubMed:[20676107](#), PubMed:[25211214](#)). Capable of killing E.coli but not S.aureus in vitro; digests outer membrane protein A (ompA) in E.coli and K.pneumoniae (PubMed:[10947984](#)).

Cellular Location	Cytoplasmic vesicle, phagosome. Note=Localized in phagolysosomes following ingestion of E.coli by neutrophils
Tissue Location	Bone marrow cells. Neutrophil (PubMed:10947984).

References

1.Pediatr Blood Cancer. 2015 Dec;62(12):2229-31.2.Hum Mutat. 2013 Jun;34(6):905-14.

Images

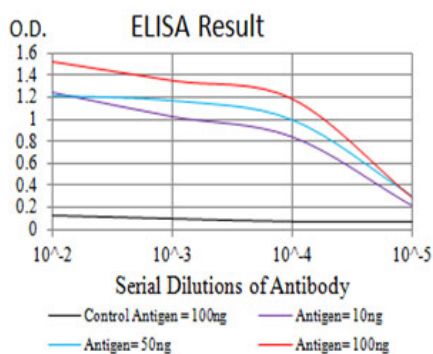


Figure 1:Black line: Control Antigen (100 ng);Purple line: Antigen (10ng); Blue line: Antigen (50 ng); Red line:Antigen (100 ng)

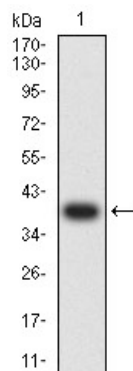


Figure 2:Western blot analysis using ELANE mAb against human ELANE (AA: 140-267) recombinant protein. (Expected MW is 39 kDa)

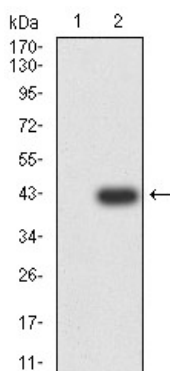


Figure 3:Western blot analysis using ELANE mAb against HEK293 (1) and ELANE (AA: 140-267)-hIgGfC transfected HEK293 (2) cell lysate.

Figure 4:Western blot analysis using ELANE mouse mAb against U937 (1), SPC-A-1 (2), and COS7 (3) cell lysate.

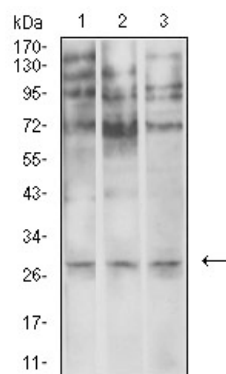


Figure 5:Flow cytometric analysis of Hela cells using ELANE mouse mAb (green) and negative control (red).

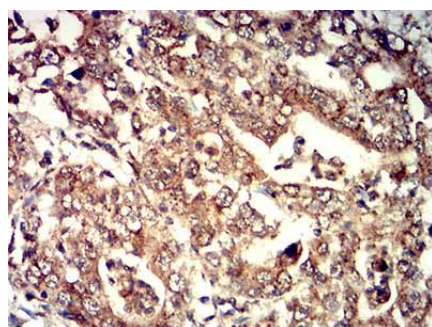
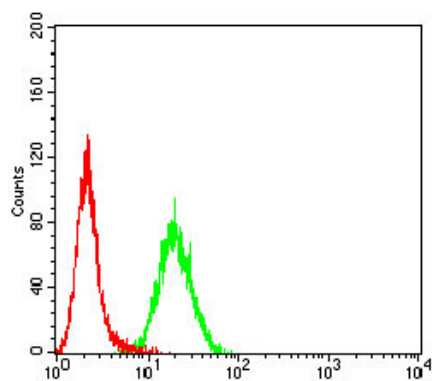


Figure 6:Immunohistochemical analysis of paraffin-embedded stomach cancer tissues using ELANE mouse mAb with DAB staining.

Please note: All products are 'FOR RESEARCH USE ONLY. NOT FOR USE IN DIAGNOSTIC OR THERAPEUTIC PROCEDURES'.