

P2RY14

Purified Mouse Monoclonal Antibody
Catalog # AO2662a

Product Information

Application	WB, IHC, ICC, E
Primary Accession	Q15391
Reactivity	Human
Host	Mouse
Clonality	Monoclonal
Clone Names	5A3F1
Isotype	Mouse IgG2b
Calculated MW	38971
Immunogen	Purified recombinant fragment of human P2RY14 (AA: extra mix) expressed in E. Coli.
Formulation	Purified antibody in PBS with 0.05% sodium azide

Additional Information

Gene ID	9934
Other Names	P2Y14; BPR105; GPR105
Dilution	WB~~ 1/500 - 1/2000 IHC~~ 1/200 - 1/1000 ICC~~ 1/200 - 1/1000 E~~ 1/10000
Storage	Maintain refrigerated at 2-8°C for up to 6 months. For long term storage store at -20°C in small aliquots to prevent freeze-thaw cycles.
Precautions	P2RY14 is for research use only and not for use in diagnostic or therapeutic procedures.

Protein Information

Name	P2RY14
Synonyms	GPR105, KIAA0001
Function	Receptor for UDP-glucose and other UDP-sugar coupled to G- proteins. Not activated by ATP, ADP, UTP or ATP.
Cellular Location	Cell membrane; Multi-pass membrane protein.
Tissue Location	Highest expression in the placenta, adipose tissue, stomach and intestine, intermediate levels in the brain, spleen, lung and heart, lowest levels in the

References

1. Mol Pharmacol. 2013 Jul;84(1):41-9. 2. Bioorg Med Chem Lett. 2007 Feb 1;17(3):761-6.

Images

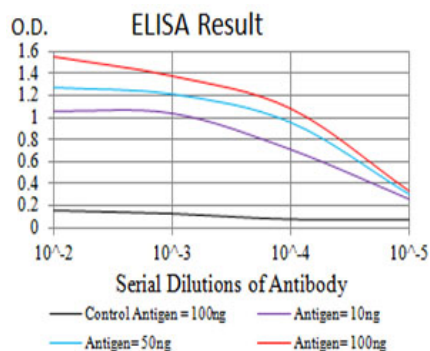


Figure 1: Black line: Control Antigen (100 ng); Purple line: Antigen (10 ng); Blue line: Antigen (50 ng); Red line: Antigen (100 ng)

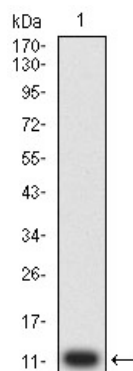


Figure 2: Western blot analysis using P2RY14 mAb against human P2RY14 (AA: extra mix) recombinant protein. (Expected MW is 11.5 kDa)

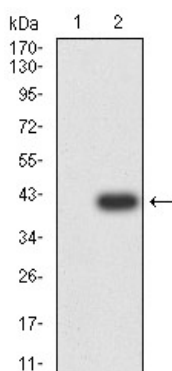


Figure 3: Western blot analysis using P2RY14 mAb against HEK293 (1) and P2RY14 (AA: extra mix)-hIgGFc transfected HEK293 (2) cell lysate.

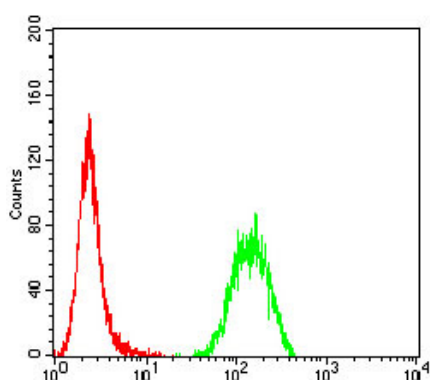


Figure 5: Flow cytometric analysis of HeLa cells using P2RY14 mouse mAb (green) and negative control (red).

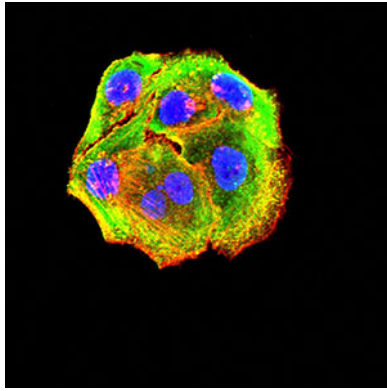


Figure 4:Immunofluorescence analysis of HeLa cells using P2RY14 mouse mAb (green). Blue: DRAQ5 fluorescent DNA dye. Red: Actin filaments have been labeled with Alexa Fluor- 555 phalloidin. Secondary antibody from Fisher (Cat#: 35503)

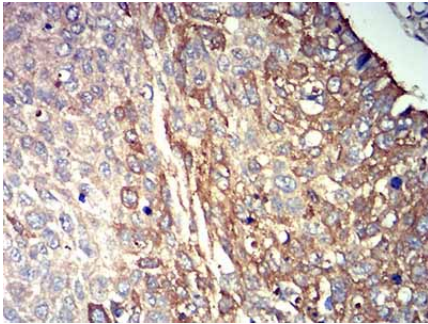


Figure 6:Immunohistochemical analysis of paraffin-embedded lung cancer tissues using P2RY14 mouse mAb with DAB staining.

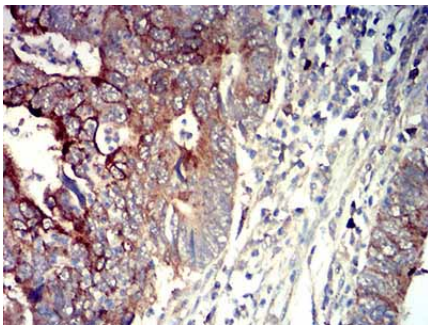


Figure 7:Immunohistochemical analysis of paraffin-embedded rectum cancer tissues using P2RY14 mouse mAb with DAB staining.

Please note: All products are 'FOR RESEARCH USE ONLY. NOT FOR USE IN DIAGNOSTIC OR THERAPEUTIC PROCEDURES'.