

CD207

Purified Mouse Monoclonal Antibody
Catalog # AO2666a

Product Information

Application	WB, IHC, ICC, E
Primary Accession	Q9UJ71
Reactivity	Human
Host	Mouse
Clonality	Monoclonal
Clone Names	1C5A1
Isotype	Mouse IgG2b
Calculated MW	36725
Immunogen	Purified recombinant fragment of human CD207 (AA: extra 155-328) expressed in E. Coli.
Formulation	Purified antibody in PBS with 0.05% sodium azide

Additional Information

Gene ID	50489
Other Names	CLEC4K
Dilution	WB~~ 1/500 - 1/2000 IHC~~1:100~500 ICC~~N/A E~~ 1/10000
Storage	Maintain refrigerated at 2-8°C for up to 6 months. For long term storage store at -20°C in small aliquots to prevent freeze-thaw cycles.
Precautions	CD207 is for research use only and not for use in diagnostic or therapeutic procedures.

Protein Information

Name	CD207
Synonyms	CLEC4K
Function	Calcium-dependent lectin displaying mannose-binding specificity. Induces the formation of Birbeck granules (BGs); is a potent regulator of membrane superimposition and zippering. Binds to sulfated as well as mannosylated glycans, keratan sulfate (KS) and beta-glucans. Facilitates uptake of antigens and is involved in the routing and/or processing of antigen for presentation to T cells. Major receptor on primary Langerhans cells for Candida species, Saccharomyces species, and Malassezia furfur. Protects against human

immunodeficiency virus-1 (HIV-1) infection. Binds to high-mannose structures present on the envelope glycoprotein which is followed by subsequent targeting of the virus to the Birbeck granules leading to its rapid degradation.

Cellular Location

Membrane; Single-pass type II membrane protein. Note=Found in Birbeck granules (BGs), which are organelles consisting of superimposed and zippered membranes

Tissue Location

Exclusively expressed by Langerhans cells. Expressed in astrocytoma and malignant ependymoma, but not in normal brain tissues.

References

1.Immunol Cell Biol. 2015 Oct;93(9):815-24.2.J Immunol. 2011 Feb 1;186(3):1377-83.

Images

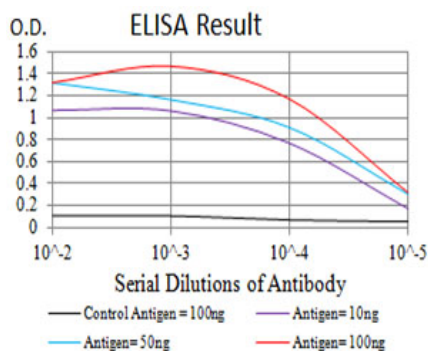


Figure 1:Black line: Control Antigen (100 ng);Purple line: Antigen (10ng); Blue line: Antigen (50 ng); Red line:Antigen (100 ng)

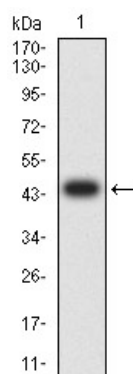


Figure 2:Western blot analysis using CD207 mAb against human CD207 (AA: extra 155-328) recombinant protein. (Expected MW is 45.8 kDa)

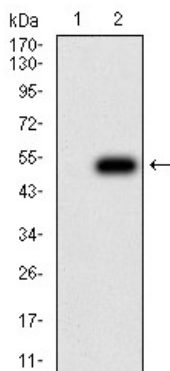
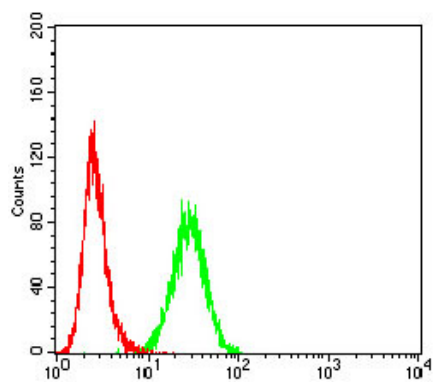


Figure 3:Western blot analysis using CD207 mAb against HEK293 (1) and CD207 (AA: extra 155-328)-hIgGFc transfected HEK293 (2) cell lysate.

Figure 4:Flow cytometric analysis of K562 cells using CD207 mouse mAb (green) and negative control (red).



Please note: All products are 'FOR RESEARCH USE ONLY. NOT FOR USE IN DIAGNOSTIC OR THERAPEUTIC PROCEDURES'.