

CD166

Purified Mouse Monoclonal Antibody
Catalog # AO2673a

Product Information

Application	WB, IHC, ICC, E
Primary Accession	Q13740
Reactivity	Human
Host	Mouse
Clonality	Monoclonal
Clone Names	3D9F1
Isotype	Mouse IgG1
Calculated MW	65102 Da
Immunogen	Purified recombinant fragment of human CD166 (AA: extra 227-381) expressed in E. Coli.
Formulation	Purified antibody in PBS with 0.05% sodium azide

Additional Information

Other Names	MEMD; ALCAM
Dilution	WB~~ 1/500 - 1/2000 IHC~~ 1/200 - 1/1000 ICC~~N/A E~~ 1/10000
Storage	Maintain refrigerated at 2-8°C for up to 6 months. For long term storage store at -20°C in small aliquots to prevent freeze-thaw cycles.
Precautions	CD166 is for research use only and not for use in diagnostic or therapeutic procedures.

Protein Information

References

1.Diagn Pathol. 2015 Jul 2;10:86.2.Asian Pac J Cancer Prev. 2015;16(9):3849-56.

Images

Figure 1:Black line: Control Antigen (100 ng);Purple line: Antigen (10ng); Blue line: Antigen (50 ng); Red line:Antigen (100 ng)

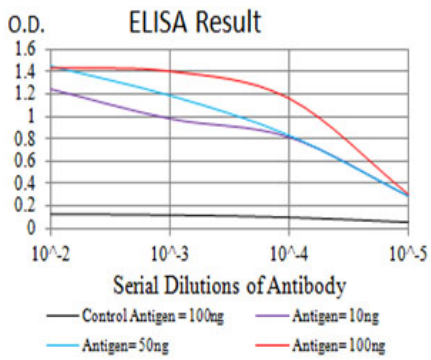


Figure 2:Western blot analysis using CD166 mAb against human CD166 (AA: extra 227-381) recombinant protein. (Expected MW is 47 kDa)

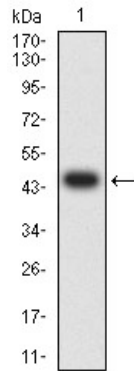


Figure 3:Western blot analysis using CD166 mAb against HEK293 (1) and CD166 (AA: extra 227-381)-hIgGfc transfected HEK293 (2) cell lysate.

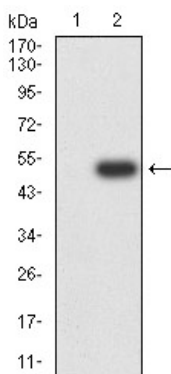


Figure 4:Flow cytometric analysis of HL-60 cells using CD166 mouse mAb (green) and negative control (red).

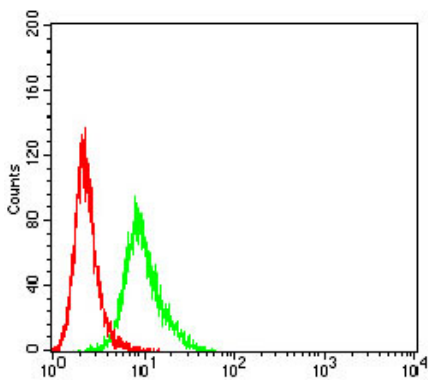


Figure 7:Flow cytometric analysis of K562 cells using CD166 mouse mAb (green) and negative control (red).

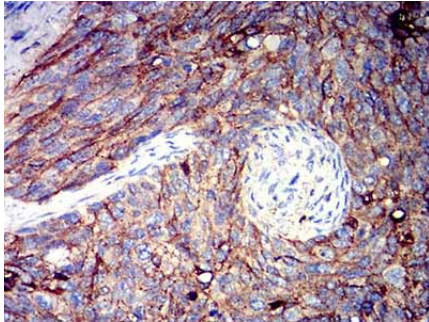
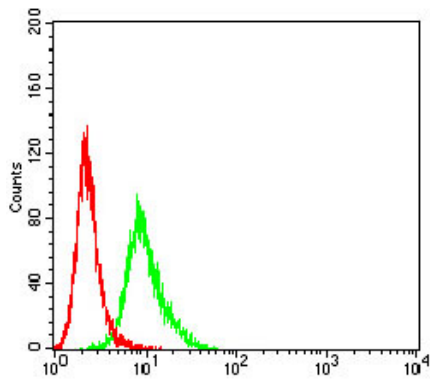


Figure 5: Immunohistochemical analysis of paraffin-embedded cervical cancer tissues using CD166 mouse mAb with DAB staining.

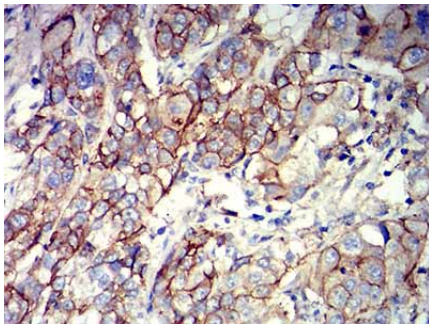


Figure 6: Immunohistochemical analysis of paraffin-embedded bladder cancer tissues using CD166 mouse mAb with DAB staining.

Please note: All products are 'FOR RESEARCH USE ONLY. NOT FOR USE IN DIAGNOSTIC OR THERAPEUTIC PROCEDURES'.