

# P2RY12

Purified Mouse Monoclonal Antibody

Catalog # AO2679a

## Product Information

---

<b>Application</b>	WB, IHC, ICC, E
<b>Primary Accession</b>	<a href="#">Q9H244</a>
<b>Reactivity</b>	Human
<b>Host</b>	Mouse
<b>Clonality</b>	Monoclonal
<b>Clone Names</b>	1C2A9
<b>Isotype</b>	Mouse IgG1
<b>Calculated MW</b>	39439
<b>Immunogen</b>	Purified recombinant fragment of human P2RY12 (AA: extra mix) expressed in E. Coli.
<b>Formulation</b>	Purified antibody in PBS with 0.05% sodium azide

## Additional Information

---

<b>Gene ID</b>	64805
<b>Other Names</b>	HORK3; P2Y12; ADPG-R; BDPLT8; SP1999; P2T(AC); P2Y(AC); P2Y(12)R; P2Y(ADP); P2Y(cyc)
<b>Dilution</b>	WB~~ 1/500 - 1/2000 IHC~~1:100~500 ICC~~N/A E~~ 1/10000
<b>Storage</b>	Maintain refrigerated at 2-8°C for up to 6 months. For long term storage store at -20°C in small aliquots to prevent freeze-thaw cycles.
<b>Precautions</b>	P2RY12 is for research use only and not for use in diagnostic or therapeutic procedures.

## Protein Information

---

<b>Name</b>	P2RY12
<b>Synonyms</b>	HORK3
<b>Function</b>	Receptor for ADP and ATP coupled to G-proteins that inhibit the adenylyl cyclase second messenger system. Not activated by UDP and UTP. Required for normal platelet aggregation and blood coagulation.
<b>Cellular Location</b>	Cell membrane; Multi-pass membrane protein

**Tissue Location**

Highly expressed in the platelets, lower levels in the brain. Lowest levels in the lung, appendix, pituitary and adrenal gland. Expressed in the spinal cord and in the fetal brain

References

1.BMC Cancer. 2015 Sep 9;15:627. 2.Blood. 2015 Feb 5;125(6):1006-13.

Images

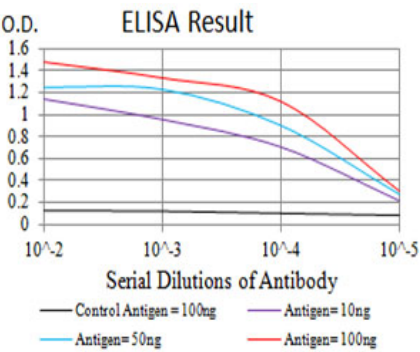


Figure 1:Black line: Control Antigen (100 ng);Purple line: Antigen (10ng); Blue line: Antigen (50 ng); Red line:Antigen (100 ng)

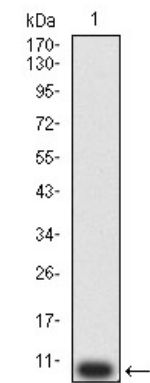


Figure 2:Western blot analysis using P2RY12 mAb against human P2RY12 (AA: extra mix) recombinant protein. (Expected MW is 9.4 kDa)

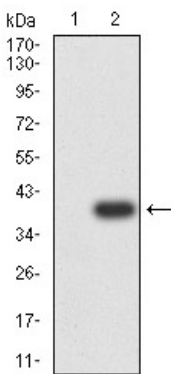


Figure 3:Western blot analysis using P2RY12 mAb against HEK293 (1) and P2RY12 (AA: extra mix)-hIgGFc transfected HEK293 (2) cell lysate.

Figure 4:Western blot analysis using P2RY12 mouse mAb against PC-3 (1) and C6 (2) cell lysate.

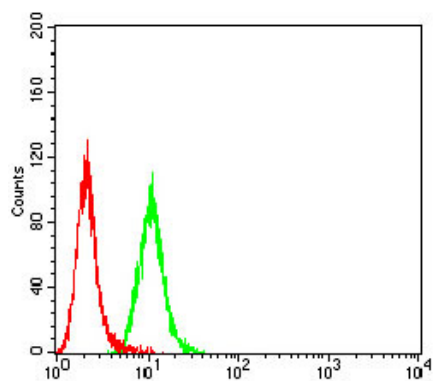
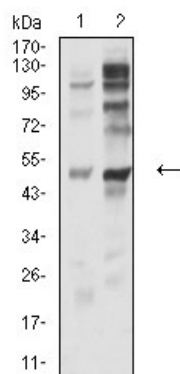


Figure 5: Flow cytometric analysis of HeLa cells using P2RY12 mouse mAb (green) and negative control (red).

Please note: All products are 'FOR RESEARCH USE ONLY. NOT FOR USE IN DIAGNOSTIC OR THERAPEUTIC PROCEDURES'.