

BTN2A2

Purified Mouse Monoclonal Antibody
Catalog # AO2731a

Product Information

Application	WB, IHC, ICC, E
Primary Accession	Q8WVV5
Reactivity	Human
Host	Mouse
Clonality	Monoclonal
Clone Names	4B11C8
Isotype	Mouse IgG2a
Calculated MW	59070
Immunogen	Purified recombinant fragment of human BTN2A2 (AA: extra 57-237) expressed in E. Coli.
Formulation	Purified antibody in PBS with 0.05% sodium azide

Additional Information

Gene ID	10385
Other Names	BTF2; BT2.2; BTN2.2
Dilution	WB~~ 1/500 - 1/2000 IHC~~1:100~500 ICC~~ 1/200 - 1/1000 E~~ 1/10000
Storage	Maintain refrigerated at 2-8°C for up to 6 months. For long term storage store at -20°C in small aliquots to prevent freeze-thaw cycles.
Precautions	BTN2A2 is for research use only and not for use in diagnostic or therapeutic procedures.

Protein Information

Name	BTN2A2
Synonyms	BT2.2, BTF2
Function	Inhibits the proliferation of CD4 and CD8 T-cells activated by anti-CD3 antibodies, T-cell metabolism and IL2 and IFNG secretion.
Cellular Location	Membrane; Single-pass type I membrane protein
Tissue Location	Highly expressed in brain, bone marrow, small intestine, muscle, spleen and pancreas. Moderate expression was seen in lung, liver and kidney.

References

1.J Exp Med. 2016 Feb 8;213(2):177-87.2.Proteomics. 2002 Jul;2(7):850-6.

Images

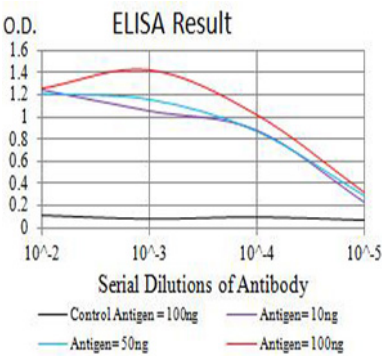


Figure 1:Black line: Control Antigen (100 ng);Purple line: Antigen (10ng); Blue line: Antigen (50 ng); Red line:Antigen (100 ng)

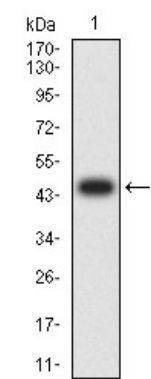


Figure 2:Western blot analysis using BTN2A2 mAb against human BTN2A2 (AA: extra 57-237) recombinant protein. (Expected MW is 46.4 kDa)

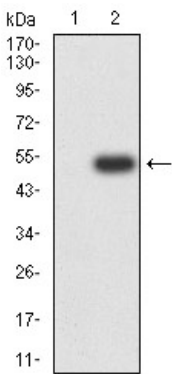


Figure 3:Western blot analysis using BTN2A2 mAb against HEK293 (1) and BTN2A2 (AA: extra 57-237)-hIgGfc transfected HEK293 (2) cell lysate.

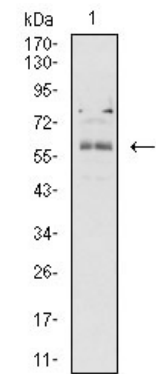


Figure 4:Western blot analysis using BTN2A2 mouse mAb against K562 (1) cell lysate.

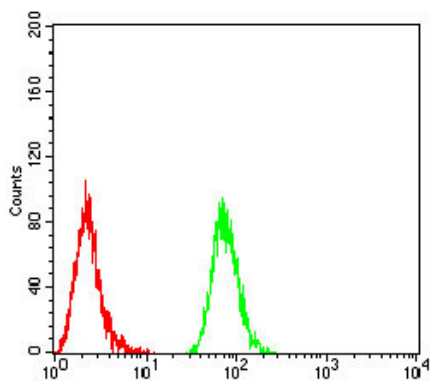


Figure 5:Flow cytometric analysis of Hela cells using BTN2A2 mouse mAb (green) and negative control (red).

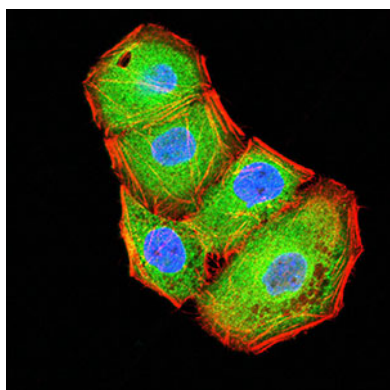


Figure 6:Immunofluorescence analysis of Hela cells using BTN2A2 mouse mAb (green). Blue: DRAQ5 fluorescent DNA dye. Red: Actin filaments have been labeled with Alexa Fluor- 555 phalloidin. Secondary antibody from Fisher (Cat#: 35503)

Please note: All products are 'FOR RESEARCH USE ONLY. NOT FOR USE IN DIAGNOSTIC OR THERAPEUTIC PROCEDURES'.