

CD1C

Purified Mouse Monoclonal Antibody

Catalog # AO2733a

Product Information

Application	WB, IHC, ICC, E
Primary Accession	P29017
Reactivity	Human
Host	Mouse
Clonality	Monoclonal
Clone Names	2A7C11
Isotype	Mouse IgG2b
Calculated MW	37654
Immunogen	Purified recombinant fragment of human CD1C (AA: extra 18-302) expressed in E. Coli.
Formulation	Purified antibody in PBS with 0.05% sodium azide

Additional Information

Gene ID	911
Other Names	R7; CD1; CD1A; BDCA1
Dilution	WB~~ 1/500 - 1/2000 IHC~~1/200 - 1/1000 ICC~~N/A E~~ 1/10000
Storage	Maintain refrigerated at 2-8°C for up to 6 months. For long term storage store at -20°C in small aliquots to prevent freeze-thaw cycles.
Precautions	CD1C is for research use only and not for use in diagnostic or therapeutic procedures.

Protein Information

Name	CD1C
Function	Antigen-presenting protein that binds self and non-self lipid and glycolipid antigens and presents them to T-cell receptors on natural killer T-cells.
Cellular Location	Cell membrane; Single-pass type I membrane protein. Endosome membrane; Single-pass type I membrane protein Lysosome. Note=Subject to intracellular trafficking between the cell membrane and endosomes
Tissue Location	Expressed on cortical thymocytes, on certain T-cell leukemias, and in various other tissues

References

1.Proc Natl Acad Sci U S A. 2016 Mar 1;113(9):E1266-75.2.J Exp Med. 2014 Jun 30;211(7):1363-77.

Images

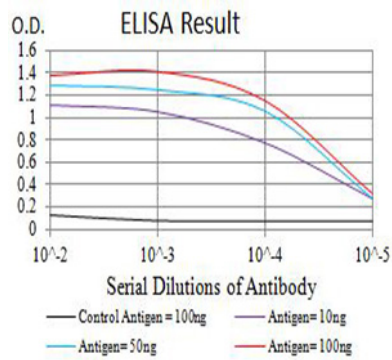


Figure 1:Black line: Control Antigen (100 ng);Purple line: Antigen (10ng); Blue line: Antigen (50 ng); Red line:Antigen (100 ng)

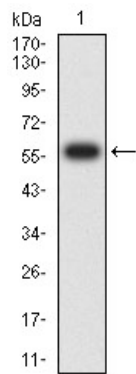


Figure 2:Western blot analysis using CD1C mAb against human CD1C (AA: extra 18-302) recombinant protein. (Expected MW is 58.1 kDa)

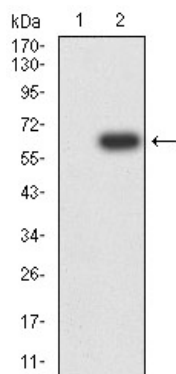


Figure 3:Western blot analysis using CD1C mAb against HEK293 (1) and CD1C (AA: extra 18-302)-hIgGfc transfected HEK293 (2) cell lysate.

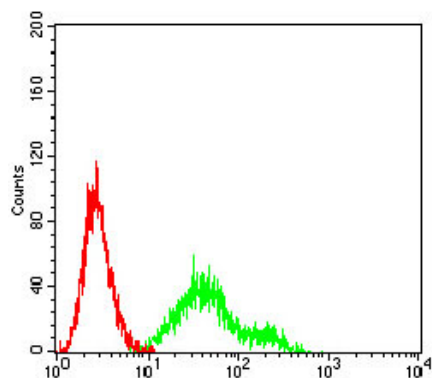


Figure 4:Flow cytometric analysis of Ramos cells using CD1C mouse mAb (green) and negative control (red).

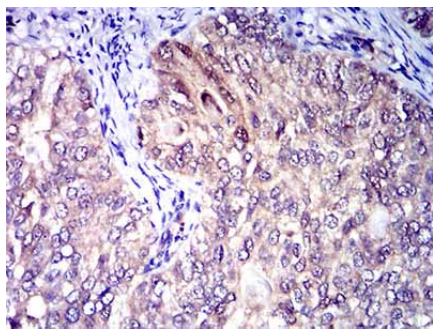


Figure 5:Immunohistochemical analysis of paraffin-embedded cervical cancer tissues using CD1C mouse mAb with DAB staining.

Please note: All products are 'FOR RESEARCH USE ONLY. NOT FOR USE IN DIAGNOSTIC OR THERAPEUTIC PROCEDURES'.