

CD227

Purified Mouse Monoclonal Antibody
Catalog # AO2736a

Product Information

Application	WB, IHC, ICC, E
Primary Accession	P15941
Reactivity	Human
Host	Mouse
Clonality	Monoclonal
Clone Names	3B10B4
Isotype	Mouse IgG1
Calculated MW	122102 Da
Immunogen	Purified recombinant fragment of human CD227 (AA: extra 66-175) expressed in E. Coli.
Formulation	Purified antibody in PBS with 0.05% sodium azide

Additional Information

Other Names	MUC1; EMA; MCD; PEM; PUM; KL-6; MAM6; MCKD; PEMT; H23AG; MCKD1; MUC-1; ADMCKD; ADMCKD1; CA 15-3; MUC-1/X; MUC1/ZD; MUC-1/SEC
Dilution	WB~~ 1/500 - 1/2000 IHC~~ 1/200 - 1/1000 ICC~~N/A E~~ 1/10000
Storage	Maintain refrigerated at 2-8°C for up to 6 months. For long term storage store at -20°C in small aliquots to prevent freeze-thaw cycles.
Precautions	CD227 is for research use only and not for use in diagnostic or therapeutic procedures.

Protein Information

References

1.Pol J Pathol. 2016;67(4):384-391. 2.Blood. 2015 Jul 16;126(3):354-62.

Images

Figure 1:Black line: Control Antigen (100 ng);Purple line: Antigen (10ng); Blue line: Antigen (50 ng); Red line:Antigen (100 ng)

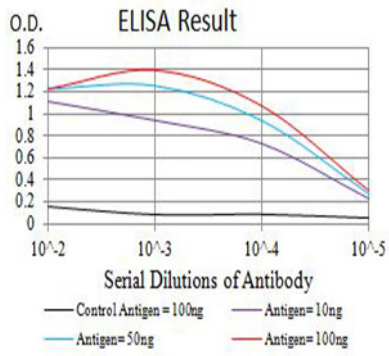


Figure 2:Western blot analysis using CD227 mAb against human CD227 (AA: extra 66-175) recombinant protein. (Expected MW is 38.5 kDa)

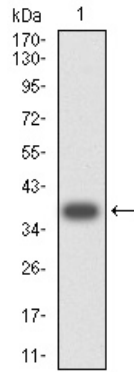


Figure 3:Western blot analysis using CD227 mAb against HEK293 (1) and CD227 (AA: extra 66-175)-hIgGfc transfected HEK293 (2) cell lysate.

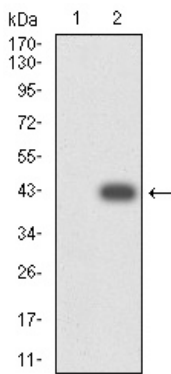


Figure 4:Flow cytometric analysis of Raji cells using CD227 mouse mAb (green) and negative control (red).

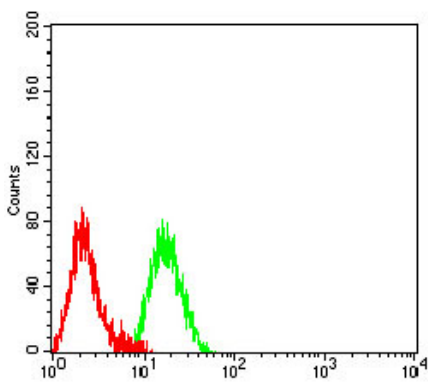
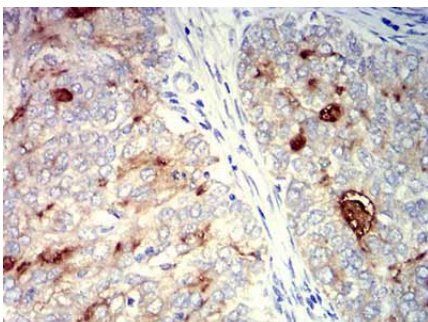
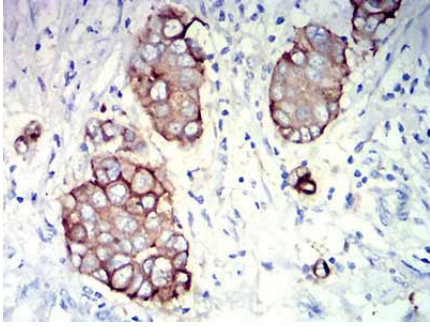


Figure 5:Immunohistochemical analysis of paraffin-embedded cervical cancer tissues using CD227 mouse mAb with DAB staining.





1/200 - 1/1000

Please note: All products are 'FOR RESEARCH USE ONLY. NOT FOR USE IN DIAGNOSTIC OR THERAPEUTIC PROCEDURES'.