

APC2

Purified Mouse Monoclonal Antibody
Catalog # AO2739a

Product Information

Application	WB, IHC, ICC, E
Primary Accession	O95996
Reactivity	Human
Host	Mouse
Clonality	Monoclonal
Clone Names	3A2G2
Isotype	Mouse IgG1
Calculated MW	243949
Immunogen	Purified recombinant fragment of human APC2 (AA: 2041-2181) expressed in E. Coli.
Formulation	Purified antibody in PBS with 0.05% sodium azide

Additional Information

Gene ID	10297
Other Names	APCL
Dilution	WB~~ 1/500 - 1/2000 IHC~~ 1/200 - 1/1000 ICC~~ 1/200 - 1/1000 E~~ 1/10000
Storage	Maintain refrigerated at 2-8°C for up to 6 months. For long term storage store at -20°C in small aliquots to prevent freeze-thaw cycles.
Precautions	APC2 is for research use only and not for use in diagnostic or therapeutic procedures.

Protein Information

Name	APC2 (HGNC:24036)
Synonyms	APCL
Function	Stabilizes microtubules and may regulate actin fiber dynamics through the activation of Rho family GTPases (PubMed: 25753423). May also function in Wnt signaling by promoting the rapid degradation of CTNNB1 (PubMed: 10021369 , PubMed: 11691822 , PubMed: 9823329).
Cellular Location	Cytoplasm, cytoskeleton. Golgi apparatus. Cytoplasm Cytoplasm, perinuclear region Note=Associated with actin filaments (PubMed:11691822,

PubMed:25753423). Associated with microtubule network
(PubMed:10644998, PubMed:11691822, PubMed:25753423).

Tissue Location

Widely expressed (at protein level). Specifically expressed in the CNS.

References

1.Cell Rep. 2015 Mar 3. pii: S2211-1247(15)00139-4.2.Cancer Res. 2000 Jan 1;60(1):101-5.

Images

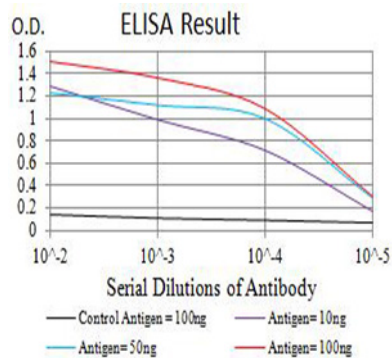


Figure 1:Black line: Control Antigen (100 ng);Purple line: Antigen (10ng); Blue line: Antigen (50 ng); Red line:Antigen (100 ng)

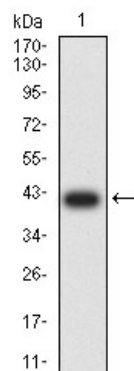


Figure 2:Western blot analysis using APC2 mAb against human APC2 (AA: 2041-2181) recombinant protein. (Expected MW is 40.9 kDa)

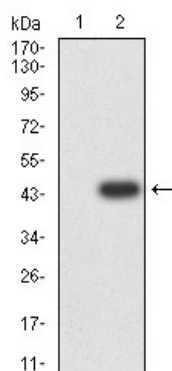


Figure 3:Western blot analysis using APC2 mAb against HEK293 (1) and APC2 (AA: 2041-2181)-hIgGfC transfected HEK293 (2) cell lysate.

Figure 5:Flow cytometric analysis of Hela cells using APC2 mouse mAb (green) and negative control (red).

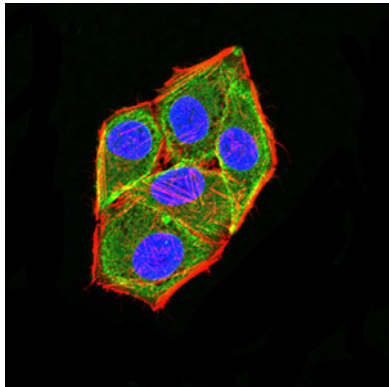
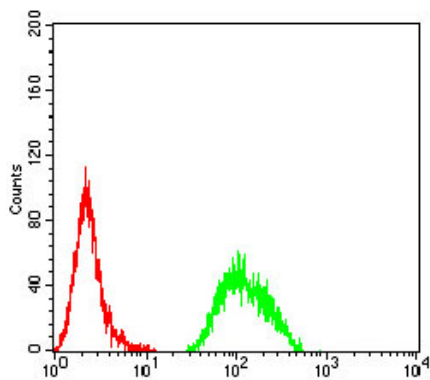


Figure 4:Immunofluorescence analysis of Hela cells using APC2 mouse mAb (green). Blue: DAPI fluorescent DNA dye. Red: Actin filaments have been labeled with Alexa Fluor- 555 phalloidin. Secondary antibody from Fisher (Cat#: 35503)

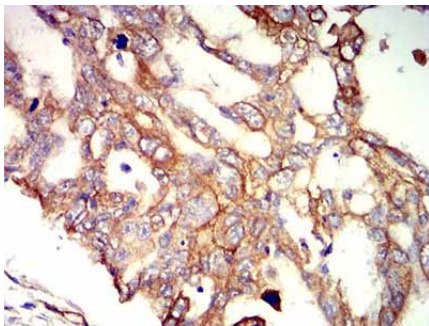


Figure 6:Immunohistochemical analysis of paraffin-embedded ovarian cancer tissues using APC2 mouse mAb with DAB staining.

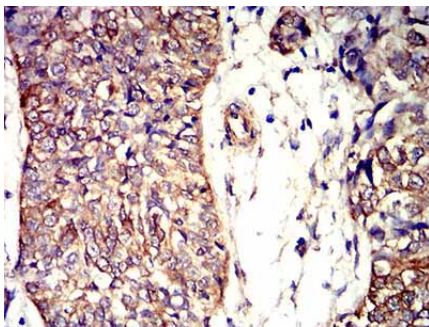


Figure 7:Immunohistochemical analysis of paraffin-embedded bladder cancer tissues using APC2 mouse mAb with DAB staining.

Please note: All products are 'FOR RESEARCH USE ONLY. NOT FOR USE IN DIAGNOSTIC OR THERAPEUTIC PROCEDURES'.