

CD268

Purified Mouse Monoclonal Antibody
Catalog # AO2742a

Product Information

Application	WB, IHC, ICC, E
Primary Accession	Q96RJ3
Reactivity	Human
Host	Mouse
Clonality	Monoclonal
Clone Names	5A9B10
Isotype	Mouse IgG2b
Calculated MW	18864
Immunogen	Purified recombinant fragment of human CD268 (AA: extra 1-78) expressed in E. Coli.
Formulation	Purified antibody in PBS with 0.05% sodium azide

Additional Information

Gene ID	115650
Other Names	TNFRSF13C; BAFFR; CVID4; BAFF-R; BROMIX; prolixin
Dilution	WB~~ 1/500 - 1/2000 IHC~~1:100~500 ICC~~N/A E~~ 1/10000
Storage	Maintain refrigerated at 2-8°C for up to 6 months. For long term storage store at -20°C in small aliquots to prevent freeze-thaw cycles.
Precautions	CD268 is for research use only and not for use in diagnostic or therapeutic procedures.

Protein Information

Name	TNFRSF13C
Synonyms	BAFFR, BR3
Function	B-cell receptor specific for TNFSF13B/TALL1/BAFF/BLyS. Promotes the survival of mature B-cells and the B-cell response.
Cellular Location	Membrane; Single-pass type III membrane protein
Tissue Location	Highly expressed in spleen and lymph node, and in resting B-cells. Detected at lower levels in activated B-cells, resting CD4+ T-cells, in thymus and peripheral

References

1.Mol Cancer Ther. 2014 Jun;13(6):1567-77.2.Mol Cell Biochem. 2011 Nov;357(1-2):21-30.

Images

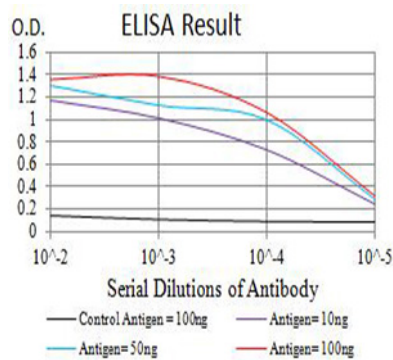


Figure 1:Black line: Control Antigen (100 ng);Purple line: Antigen (10ng); Blue line: Antigen (50 ng); Red line:Antigen (100 ng)

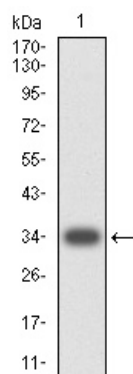


Figure 2:Western blot analysis using CD268 mAb against human CD268 (AA: extra 1-78) recombinant protein. (Expected MW is 34 kDa)

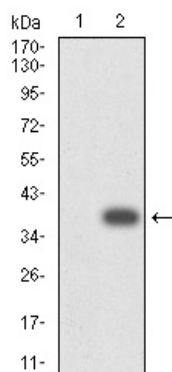
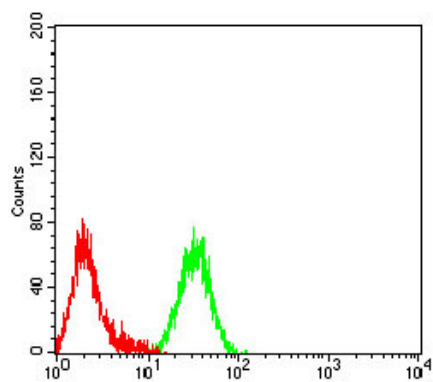


Figure 3:Western blot analysis using CD268 mAb against HEK293 (1) and CD268 (AA: extra 1-78)-hIgGFc transfected HEK293 (2) cell lysate.

Figure 4:Flow cytometric analysis of Raji cells using CD268 mouse mAb (green) and negative control (red).



Please note: All products are 'FOR RESEARCH USE ONLY. NOT FOR USE IN DIAGNOSTIC OR THERAPEUTIC PROCEDURES'.