

# CD268

Purified Mouse Monoclonal Antibody  
Catalog # AO2743a

## Product Information

---

<b>Application</b>	WB, IHC, ICC, E
<b>Primary Accession</b>	<a href="#">Q96RJ3</a>
<b>Reactivity</b>	Human, Rat
<b>Host</b>	Mouse
<b>Clonality</b>	Monoclonal
<b>Clone Names</b>	5A9B6
<b>Isotype</b>	Mouse IgG2b
<b>Calculated MW</b>	18864
<b>Immunogen</b>	Purified recombinant fragment of human CD268 (AA: extra 1-78) expressed in E. Coli.
<b>Formulation</b>	Purified antibody in PBS with 0.05% sodium azide

## Additional Information

---

<b>Gene ID</b>	115650
<b>Other Names</b>	TNFRSF13C; BAFFR; CVID4; BAFF-R; BROMIX; prolixin
<b>Dilution</b>	WB~~ 1/500 - 1/2000 IHC~~1:100~500 ICC~~N/A E~~ 1/10000
<b>Storage</b>	Maintain refrigerated at 2-8°C for up to 6 months. For long term storage store at -20°C in small aliquots to prevent freeze-thaw cycles.
<b>Precautions</b>	CD268 is for research use only and not for use in diagnostic or therapeutic procedures.

## Protein Information

---

<b>Name</b>	TNFRSF13C
<b>Synonyms</b>	BAFFR, BR3
<b>Function</b>	B-cell receptor specific for TNFSF13B/TALL1/BAFF/BLyS. Promotes the survival of mature B-cells and the B-cell response.
<b>Cellular Location</b>	Membrane; Single-pass type III membrane protein
<b>Tissue Location</b>	Highly expressed in spleen and lymph node, and in resting B-cells. Detected at lower levels in activated B-cells, resting CD4+ T-cells, in thymus and peripheral

## References

1.Mol Cancer Ther. 2014 Jun;13(6):1567-77.2.Mol Cell Biochem. 2011 Nov;357(1-2):21-30.

## Images

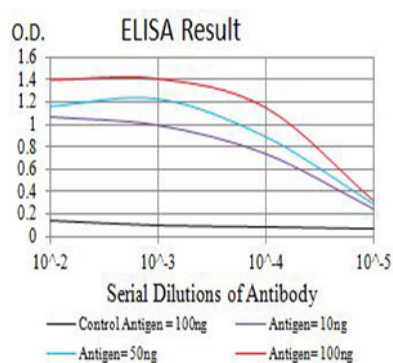


Figure 1:Black line: Control Antigen (100 ng);Purple line: Antigen (10ng); Blue line: Antigen (50 ng); Red line:Antigen (100 ng)

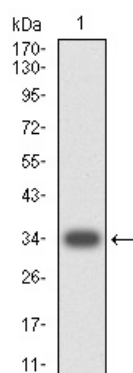


Figure 2:Western blot analysis using CD268 mAb against human CD268 (AA: extra 1-78) recombinant protein. (Expected MW is 34 kDa)

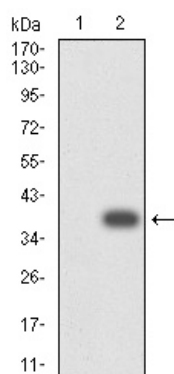


Figure 3:Western blot analysis using CD268 mAb against HEK293 (1) and CD268 (AA: extra 1-78)-hIgGFc transfected HEK293 (2) cell lysate.

Figure 4:Western blot analysis using CD268 mouse mAb against C6 (1) cell lysate.

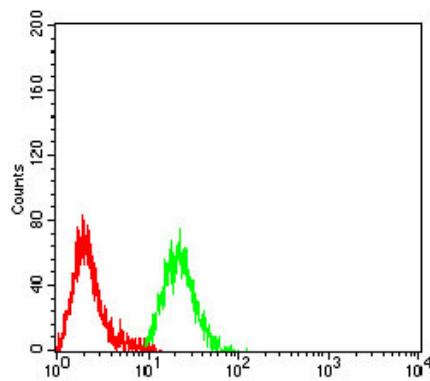
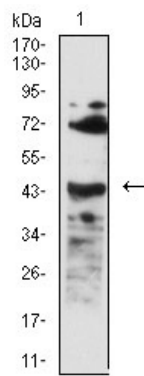


Figure 5: Flow cytometric analysis of Raji cells using CD268 mouse mAb (green) and negative control (red).

Please note: All products are 'FOR RESEARCH USE ONLY. NOT FOR USE IN DIAGNOSTIC OR THERAPEUTIC PROCEDURES'.