

# GRM8

Purified Mouse Monoclonal Antibody  
Catalog # AO2745a

## Product Information

---

<b>Application</b>	WB, IHC, ICC, E
<b>Primary Accession</b>	<a href="#">O00222</a>
<b>Reactivity</b>	Human
<b>Host</b>	Mouse
<b>Clonality</b>	Monoclonal
<b>Clone Names</b>	4C1C1
<b>Isotype</b>	Mouse IgG1
<b>Calculated MW</b>	101741
<b>Immunogen</b>	Purified recombinant fragment of human GRM8 (AA: extra 440-583) expressed in E. Coli.
<b>Formulation</b>	Purified antibody in PBS with 0.05% sodium azide

## Additional Information

---

<b>Gene ID</b>	2918
<b>Other Names</b>	GLUR8; mGlu8; GPRC1H; MGLUR8
<b>Dilution</b>	WB~~ 1/500 - 1/2000 IHC~~1:100~500 ICC~~N/A E~~ 1/10000
<b>Storage</b>	Maintain refrigerated at 2-8°C for up to 6 months. For long term storage store at -20°C in small aliquots to prevent freeze-thaw cycles.
<b>Precautions</b>	GRM8 is for research use only and not for use in diagnostic or therapeutic procedures.

## Protein Information

---

<b>Name</b>	GRM8
<b>Synonyms</b>	GPRC1H, MGLUR8
<b>Function</b>	G-protein coupled receptor for glutamate. Ligand binding causes a conformation change that triggers signaling via guanine nucleotide-binding proteins (G proteins) and modulates the activity of down-stream effectors, such as adenylate cyclase. Signaling inhibits adenylate cyclase activity.
<b>Cellular Location</b>	Cell membrane; Multi-pass membrane protein.

References

1.Hereditas. 2014 Dec;151(6):140-4. 2.Am J Med Genet B Neuropsychiatr Genet. 2009 Apr 5;150B(3):359-68.

Images

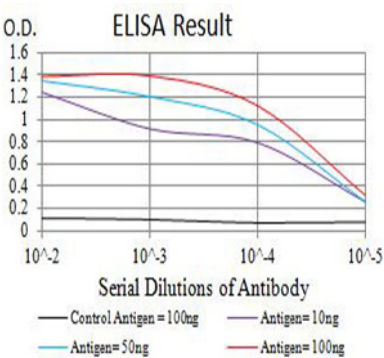


Figure 1:Black line: Control Antigen (100 ng);Purple line: Antigen (10ng); Blue line: Antigen (50 ng); Red line:Antigen (100 ng)

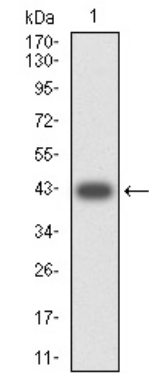


Figure 2:Western blot analysis using GRM8 mAb against human GRM8 (AA: extra 440-583) recombinant protein. (Expected MW is 42.6 kDa)

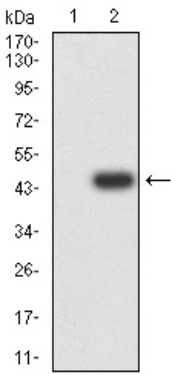


Figure 3:Western blot analysis using GRM8 mAb against HEK293 (1) and GRM8 (AA: extra 440-583)-hIgGFc transfected HEK293 (2) cell lysate.

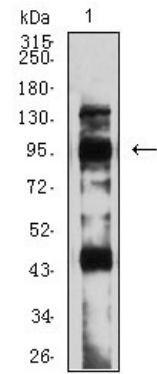
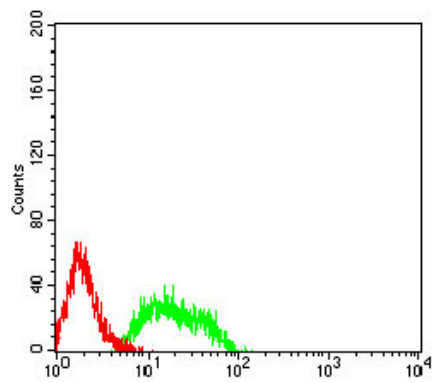


Figure 4:Western blot analysis using GRM8 mouse mAb against C6 (1) cell lysate.

Figure 5:Flow cytometric analysis of SK-N-SH cells using



GRM8 mouse mAb (green) and negative control (red).

Please note: All products are 'FOR RESEARCH USE ONLY. NOT FOR USE IN DIAGNOSTIC OR THERAPEUTIC PROCEDURES'.