

# CD319

Purified Mouse Monoclonal Antibody  
Catalog # AO2746a

## Product Information

---

<b>Application</b>	WB, IHC, ICC, E
<b>Primary Accession</b>	<a href="#">Q9NQ25</a>
<b>Reactivity</b>	Human
<b>Host</b>	Mouse
<b>Clonality</b>	Monoclonal
<b>Clone Names</b>	5G5A4
<b>Isotype</b>	Mouse IgG1
<b>Calculated MW</b>	37421
<b>Immunogen</b>	Purified recombinant fragment of human CD319 (AA: extra 23-226) expressed in E. Coli.
<b>Formulation</b>	Purified antibody in PBS with 0.05% sodium azide

## Additional Information

---

<b>Gene ID</b>	57823
<b>Other Names</b>	SLAMF7; 19A; CS1; CRACC
<b>Dilution</b>	WB~~ 1/500 - 1/2000 IHC~~ 1/200 - 1/1000 ICC~~N/A E~~ 1/10000
<b>Storage</b>	Maintain refrigerated at 2-8°C for up to 6 months. For long term storage store at -20°C in small aliquots to prevent freeze-thaw cycles.
<b>Precautions</b>	CD319 is for research use only and not for use in diagnostic or therapeutic procedures.

## Protein Information

---

<b>Name</b>	SLAMF7
<b>Synonyms</b>	CS1
<b>Function</b>	Self-ligand receptor of the signaling lymphocytic activation molecule (SLAM) family. SLAM receptors triggered by homo- or heterotypic cell-cell interactions are modulating the activation and differentiation of a wide variety of immune cells and thus are involved in the regulation and interconnection of both innate and adaptive immune response. Activities are controlled by presence or absence of small cytoplasmic adapter proteins, SH2D1A/SAP and/or SH2D1B/EAT-2. Isoform 1 mediates NK cell activation through a

SH2D1A-independent extracellular signal-regulated ERK-mediated pathway (PubMed:[11698418](#)). Positively regulates NK cell functions by a mechanism dependent on phosphorylated SH2D1B. Downstream signaling implicates PLCG1, PLCG2 and PI3K (PubMed:[16339536](#)). In addition to heterotypic NK cells-target cells interactions also homotypic interactions between NK cells may contribute to activation. However, in the absence of SH2D1B, inhibits NK cell function. Also acts inhibitory in T-cells (By similarity). May play a role in lymphocyte adhesion (PubMed:[11802771](#)). In LPS-activated monocytes negatively regulates production of pro-inflammatory cytokines (PubMed:[23695528](#)).

## Cellular Location

Membrane; Single-pass type I membrane protein.

## Tissue Location

Expressed in spleen, lymph node, peripheral blood leukocytes, bone marrow, small intestine, stomach, appendix, lung and trachea. Expression was detected in NK cells, activated B-cells, NK- cell line but not in promyelocytic, B-, or T-cell lines. Expressed in monocytes. Isoform 3 is expressed at much lower level than isoform 1

## References

1.Arthritis Res Ther. 2013;15(6):R207.2.Inflamm Res. 2013 Aug;62(8):765-72.

## Images

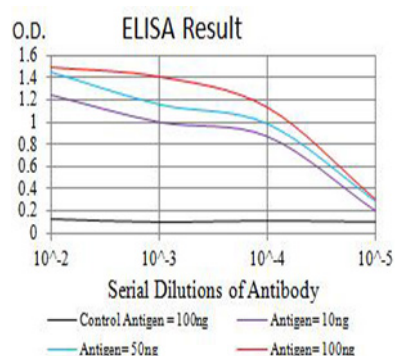


Figure 1:Black line: Control Antigen (100 ng);Purple line: Antigen (10ng); Blue line: Antigen (50 ng); Red line:Antigen (100 ng)

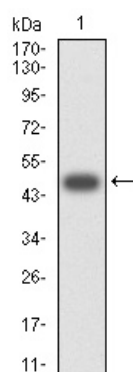


Figure 2:Western blot analysis using CD319 mAb against human CD319 (AA: extra 23-226) recombinant protein. (Expected MW is 48.3 kDa)

Figure 3:Western blot analysis using CD319 mAb against HEK293 (1) and CD319 (AA: extra 23-226)-hIgGFc transfected HEK293 (2) cell lysate.

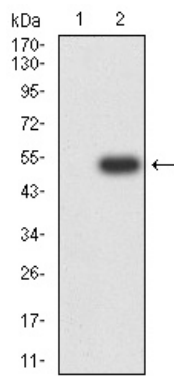


Figure 4:Flow cytometric analysis of Raji cells using CD319 mouse mAb (green) and negative control (red).

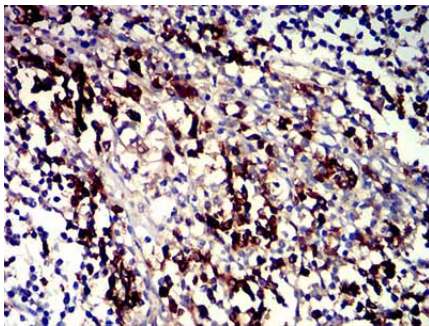
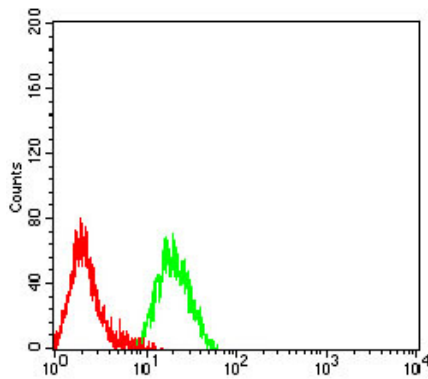
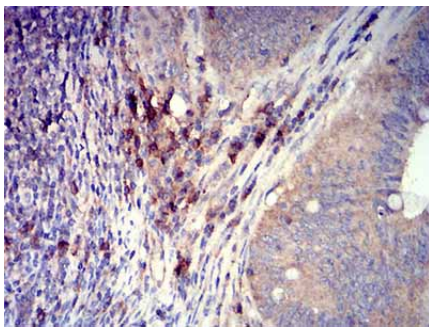


Figure 5:Immunohistochemical analysis of paraffin-embedded tonsil tissues using CD319 mouse mAb with DAB staining.



1/200 - 1/1000

Please note: All products are 'FOR RESEARCH USE ONLY. NOT FOR USE IN DIAGNOSTIC OR THERAPEUTIC PROCEDURES'.