

RSRC1 Antibody (Center)

Affinity Purified Rabbit Polyclonal Antibody (Pab)

Catalog # AP10005c

Product Information

Application	WB, IHC-P, E
Primary Accession	Q96IZ7
Other Accession	Q2T9Y0 , NP_057709.2
Reactivity	Human
Predicted	Bovine
Host	Rabbit
Clonality	Polyclonal
Isotype	Rabbit IgG
Clone Names	RB27548
Calculated MW	38677
Antigen Region	139-169

Additional Information

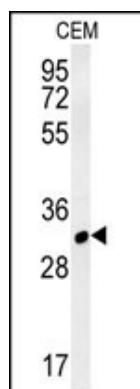
Gene ID	51319
Other Names	Serine/Arginine-related protein 53, SRrp53, Arginine/serine-rich coiled-coil protein 1, RSRC1, SRRP53
Target/Specificity	This RSRC1 antibody is generated from rabbits immunized with a KLH conjugated synthetic peptide between 139-169 amino acids from the Central region of human RSRC1.
Dilution	WB~~1:1000 IHC-P~~1:100~500 E~~Use at an assay dependent concentration.
Format	Purified polyclonal antibody supplied in PBS with 0.09% (W/V) sodium azide. This antibody is purified through a protein A column, followed by peptide affinity purification.
Storage	Maintain refrigerated at 2-8°C for up to 2 weeks. For long term storage store at -20°C in small aliquots to prevent freeze-thaw cycles.
Precautions	RSRC1 Antibody (Center) is for research use only and not for use in diagnostic or therapeutic procedures.

Protein Information

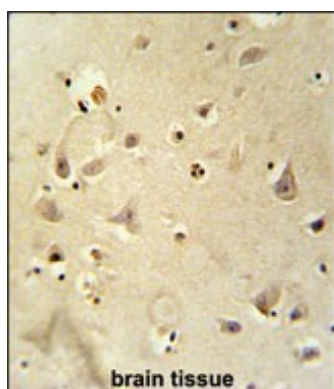
Name	RSRC1
Synonyms	SRRP53

Function	Has a role in alternative splicing and transcription regulation (PubMed: 29522154). Involved in both constitutive and alternative pre-mRNA splicing. May have a role in the recognition of the 3' splice site during the second step of splicing.
Cellular Location	Nucleus. Nucleus speckle. Cytoplasm. Note=Shuttles between the nucleus and cytoplasm.
Tissue Location	Widely expressed. Expressed in brain, spinal cord, cerebellum.

Images



RSRC1 Antibody (Center) (Cat. #AP10005c) western blot analysis in CEM cell line lysates (35ug/lane). This demonstrates the RSRC1 antibody detected the RSRC1 protein (arrow).



RSRC1 antibody (Center) (Cat. #AP10005c) immunohistochemistry analysis in formalin fixed and paraffin embedded human brain tissue followed by peroxidase conjugation of the secondary antibody and DAB staining. This data demonstrates the use of the RSRC1 antibody (Center) for immunohistochemistry. Clinical relevance has not been evaluated.

Please note: All products are 'FOR RESEARCH USE ONLY. NOT FOR USE IN DIAGNOSTIC OR THERAPEUTIC PROCEDURES'.