

POTEE Antibody (Center)

Affinity Purified Rabbit Polyclonal Antibody (Pab)

Catalog # AP10010C

Product Information

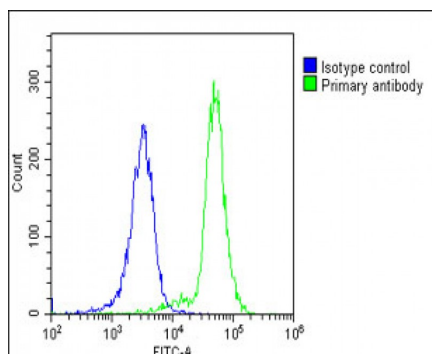
Application	WB, FC, E
Primary Accession	Q6S8J3
Other Accession	NP_001077007.1
Reactivity	Human
Host	Rabbit
Clonality	Polyclonal
Isotype	Rabbit IgG
Calculated MW	121363
Antigen Region	380-409

Additional Information

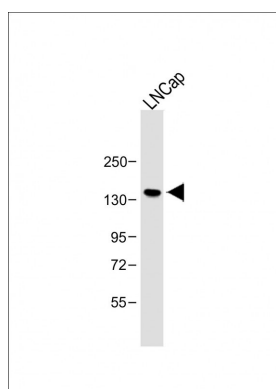
Gene ID	445582
Other Names	POTE ankyrin domain family member E, ANKRD26-like family C member 1A, Prostate, ovary, testis-expressed protein on chromosome 2, POTE-2, POTEE, A26C1A, POTE2
Target/Specificity	This POTEE antibody is generated from rabbits immunized with a KLH conjugated synthetic peptide between 380-409 amino acids from the Central region of human POTEE.
Dilution	WB~~1:1000 FC~~1:10~50 E~~Use at an assay dependent concentration.
Format	Purified polyclonal antibody supplied in PBS with 0.09% (W/V) sodium azide. This antibody is purified through a protein A column, followed by peptide affinity purification.
Storage	Maintain refrigerated at 2-8°C for up to 2 weeks. For long term storage store at -20°C in small aliquots to prevent freeze-thaw cycles.
Precautions	POTEE Antibody (Center) is for research use only and not for use in diagnostic or therapeutic procedures.

Protein Information

Name	POTEE
Synonyms	A26C1A, POTE2



Overlay histogram showing K562 cells stained with AP10010c (green line). The cells were fixed with 2% paraformaldehyde (10 min) and then permeabilized with 90% methanol for 10 min. The cells were then incubated in 2% bovine serum albumin to block non-specific protein-protein interactions followed by the antibody (AP10010c, 1:25 dilution) for 60 min at 37°C. The secondary antibody used was Goat-Anti-Rabbit IgG, DyLight® 488 Conjugated Highly Cross-Adsorbed (1583138) at 1/200 dilution for 40 min at 37°C. Isotype control antibody (blue line) was rabbit IgG1 ($1\mu\text{g}/1 \times 10^6$ cells) used under the same conditions. Acquisition of >10,000 events was performed.



Anti-POTEE Antibody (Center) at 1:1000 dilution + LNCap whole cell lysate. Lysates/proteins at 20 μg per lane. Secondary Goat Anti-Rabbit IgG, (H+L), Peroxidase conjugated at 1/10000 dilution. Predicted band size: 121 kDa. Blocking/Dilution buffer: 5% NFDM/TBST.

Please note: All products are 'FOR RESEARCH USE ONLY. NOT FOR USE IN DIAGNOSTIC OR THERAPEUTIC PROCEDURES'.