

# TMEM132D Antibody (C-term)

Affinity Purified Rabbit Polyclonal Antibody (Pab)

Catalog # AP10011b

## Product Information

---

<b>Application</b>	WB, FC, E
<b>Primary Accession</b>	<a href="#">Q14C87</a>
<b>Other Accession</b>	<a href="#">NP_597705.2</a>
<b>Reactivity</b>	Human
<b>Host</b>	Rabbit
<b>Clonality</b>	Polyclonal
<b>Isotype</b>	Rabbit IgG
<b>Clone Names</b>	RB27559
<b>Calculated MW</b>	122309
<b>Antigen Region</b>	805-833

## Additional Information

---

<b>Gene ID</b>	121256
<b>Other Names</b>	Transmembrane protein 132D, Mature oligodendrocytes transmembrane protein, Mature OL transmembrane protein, TMEM132D, HBE120, KIAA1944, MOLT
<b>Target/Specificity</b>	This TMEM132D antibody is generated from rabbits immunized with a KLH conjugated synthetic peptide between 805-833 amino acids from the C-terminal region of human TMEM132D.
<b>Dilution</b>	WB~~1:1000 FC~~1:10~50 E~~Use at an assay dependent concentration.
<b>Format</b>	Purified polyclonal antibody supplied in PBS with 0.09% (W/V) sodium azide. This antibody is purified through a protein A column, followed by peptide affinity purification.
<b>Storage</b>	Maintain refrigerated at 2-8°C for up to 2 weeks. For long term storage store at -20°C in small aliquots to prevent freeze-thaw cycles.
<b>Precautions</b>	TMEM132D Antibody (C-term) is for research use only and not for use in diagnostic or therapeutic procedures.

## Protein Information

---

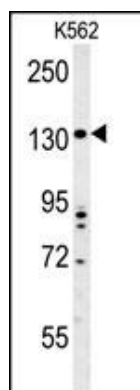
<b>Name</b>	TMEM132D ( <a href="#">HGNC:29411</a> )
<b>Function</b>	Regulate neuronals morphology via inhibition of the WAVE regulatory complex (WCR), a complex that controls F-actin cytoskeletal dynamics.

**Cellular Location**

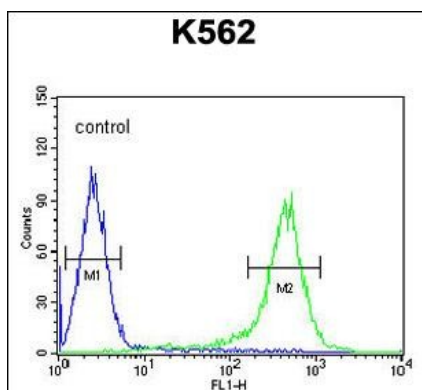
Membrane; Single-pass type I membrane protein

**Tissue Location**

Expressed in mature oligodendrocytes. Detected in the brain, lung, pancreas and testis (PubMed:12966072). Highly expressed in mature neurons of the adult nervous system (PubMed:33726789).

**Images**

TMEM132D Antibody (C-term) (Cat. #AP10011b) western blot analysis in K562 cell line lysates (35ug/lane). This demonstrates the TMEM132D antibody detected the TMEM132D protein (arrow).



TMEM132D Antibody (C-term) (Cat. #AP10011b) flow cytometric analysis of K562 cells (right histogram) compared to a negative control cell (left histogram). FITC-conjugated goat-anti-rabbit secondary antibodies were used for the analysis.

Please note: All products are 'FOR RESEARCH USE ONLY. NOT FOR USE IN DIAGNOSTIC OR THERAPEUTIC PROCEDURES'.