

C6orf58 Antibody (Center)

Affinity Purified Rabbit Polyclonal Antibody (Pab)
Catalog # AP10021c

Product Information

Application	WB, IHC-P, FC, E
Primary Accession	Q6P5S2
Other Accession	NP_001010905.1
Reactivity	Human
Host	Rabbit
Clonality	Polyclonal
Isotype	Rabbit IgG
Clone Names	RB27580
Calculated MW	37926
Antigen Region	205-233

Additional Information

Gene ID	352999
Other Names	UPF0762 protein C6orf58, C6orf58
Target/Specificity	This C6orf58 antibody is generated from rabbits immunized with a KLH conjugated synthetic peptide between 205-233 amino acids from the Central region of human C6orf58.
Dilution	WB~~1:1000 IHC-P~~1:100~500 FC~~1:10~50 E~~Use at an assay dependent concentration.
Format	Purified polyclonal antibody supplied in PBS with 0.09% (W/V) sodium azide. This antibody is purified through a protein A column, followed by peptide affinity purification.
Storage	Maintain refrigerated at 2-8°C for up to 2 weeks. For long term storage store at -20°C in small aliquots to prevent freeze-thaw cycles.
Precautions	C6orf58 Antibody (Center) is for research use only and not for use in diagnostic or therapeutic procedures.

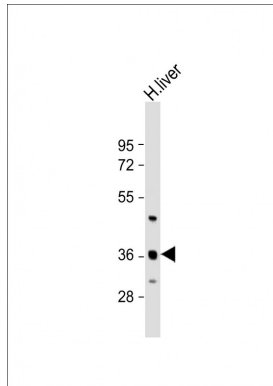
Protein Information

Name	LEG1 {ECO:0000250 UniProtKB:A5PF61, ECO:0000250 UniProtKB:Q4QRF7}
Function	May be involved in early liver development.
Cellular Location	Secreted {ECO:0000250 UniProtKB:A5PF61,

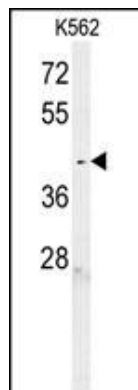
Tissue Location

Detected in saliva and in hypomineralized dental enamel (at protein level).

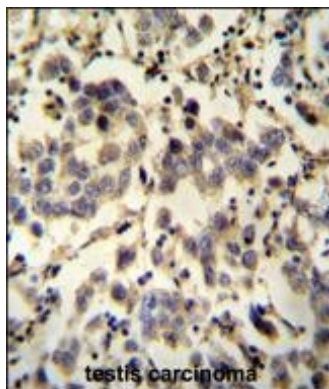
Images



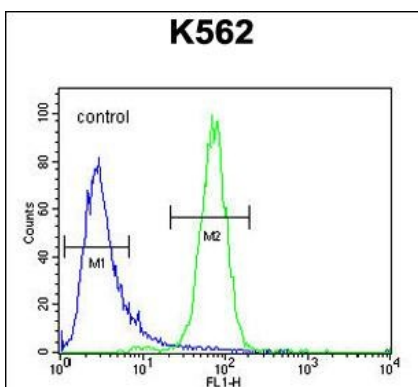
Anti-C6orf58 Antibody (Center) at 1:1000 dilution + human liver lysate Lysates/proteins at 20 µg per lane. Secondary Goat Anti-Rabbit IgG, (H+L), Peroxidase conjugated at 1/10000 dilution. Predicted band size : 38 kDa Blocking/Dilution buffer: 5% NFDM/TBST.



C6orf58 Antibody (Center) (Cat. #AP10021c) western blot analysis in K562 cell line lysates (35ug/lane). This demonstrates the C6orf58 antibody detected the C6orf58 protein (arrow).



C6orf58 antibody (Center) (Cat. #AP10021c) immunohistochemistry analysis in formalin fixed and paraffin embedded human testis carcinoma followed by peroxidase conjugation of the secondary antibody and DAB staining. This data demonstrates the use of the C6orf58 antibody (Center) for immunohistochemistry. Clinical relevance has not been evaluated.



C6orf58 Antibody (Center) (Cat. #AP10021c) flow cytometric analysis of K562 cells (right histogram) compared to a negative control cell (left histogram). FITC-conjugated goat-anti-rabbit secondary antibodies were used for the analysis.

Please note: All products are 'FOR RESEARCH USE ONLY. NOT FOR USE IN DIAGNOSTIC OR THERAPEUTIC PROCEDURES'.