

KIAA1680 Antibody (C-term)

Affinity Purified Rabbit Polyclonal Antibody (Pab)

Catalog # AP10022b

Product Information

Application	WB, IHC-P, E
Primary Accession	Q9C0I3
Other Accession	NP_001138537.1 , NP_997374.1
Reactivity	Human
Host	Rabbit
Clonality	Polyclonal
Isotype	Rabbit IgG
Clone Names	RB27586
Calculated MW	99510
Antigen Region	780-808

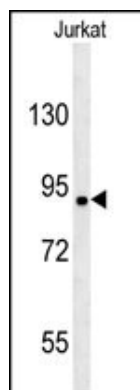
Additional Information

Gene ID	401145
Other Names	Serine-rich coiled-coil domain-containing protein 1, Coiled-coil serine-rich protein 1, CCSER1, FAM190A, KIAA1680
Target/Specificity	This KIAA1680 antibody is generated from rabbits immunized with a KLH conjugated synthetic peptide between 780-808 amino acids from the C-terminal region of human KIAA1680.
Dilution	WB~~1:1000 IHC-P~~1:100~500 E~~Use at an assay dependent concentration.
Format	Purified polyclonal antibody supplied in PBS with 0.09% (W/V) sodium azide. This antibody is purified through a protein A column, followed by peptide affinity purification.
Storage	Maintain refrigerated at 2-8°C for up to 2 weeks. For long term storage store at -20°C in small aliquots to prevent freeze-thaw cycles.
Precautions	KIAA1680 Antibody (C-term) is for research use only and not for use in diagnostic or therapeutic procedures.

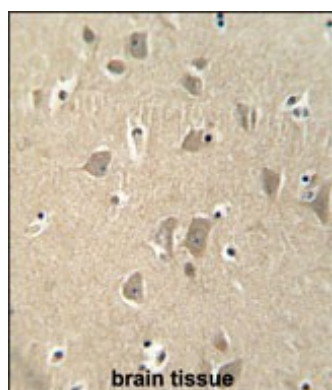
Protein Information

Name	CCSER1
Synonyms	FAM190A, KIAA1680

Images



KIAA1680 Antibody (C-term) (Cat. #AP10022b) western blot analysis in Jurkat cell line lysates (35ug/lane). This demonstrates the KIAA1680 antibody detected the KIAA1680 protein (arrow).



KIAA1680 antibody (C-term) (Cat. #AP10022b) immunohistochemistry analysis in formalin fixed and paraffin embedded human brain tissue followed by peroxidase conjugation of the secondary antibody and DAB staining. This data demonstrates the use of the KIAA1680 antibody (C-term) for immunohistochemistry. Clinical relevance has not been evaluated.

Please note: All products are 'FOR RESEARCH USE ONLY. NOT FOR USE IN DIAGNOSTIC OR THERAPEUTIC PROCEDURES'.