

SLC7A13 Antibody (Center)

Affinity Purified Rabbit Polyclonal Antibody (Pab)

Catalog # AP10029c

Product Information

Application	WB, IHC-P, E
Primary Accession	Q8TCU3
Other Accession	NP_620172.2
Reactivity	Human, Rat, Mouse
Host	Rabbit
Clonality	Polyclonal
Isotype	Rabbit IgG
Clone Names	RB27603
Calculated MW	52114
Antigen Region	171-200

Additional Information

Gene ID	157724
Other Names	Solute carrier family 7 member 13, Sodium-independent aspartate/glutamate transporter 1, X-amino acid transporter 2, SLC7A13, AGT1, XAT2
Target/Specificity	This SLC7A13 antibody is generated from rabbits immunized with a KLH conjugated synthetic peptide between 171-200 amino acids from the Central region of human SLC7A13.
Dilution	WB~~1:1000 IHC-P~~1:100~500 E~~Use at an assay dependent concentration.
Format	Purified polyclonal antibody supplied in PBS with 0.05% (V/V) Proclin 300. This antibody is prepared by Saturated Ammonium Sulfate (SAS) precipitation followed by dialysis against PBS.
Storage	Maintain refrigerated at 2-8°C for up to 2 weeks. For long term storage store at -20°C in small aliquots to prevent freeze-thaw cycles.
Precautions	SLC7A13 Antibody (Center) is for research use only and not for use in diagnostic or therapeutic procedures.

Protein Information

Name	SLC7A13
Synonyms	AGT1, XAT2
Function	Associates with SLC3A1/rBAT to form a functional heterodimeric complex

that transports anionic and neutral amino acids across the apical plasma membrane of renal epithelium. Preferentially mediates exchange transport, but can also operate via facilitated diffusion. May act as a major transporter for L-cystine in late proximal tubules, ensuring its reabsorption from the luminal fluid in exchange for cytosolic L-glutamate or L-aspartate.

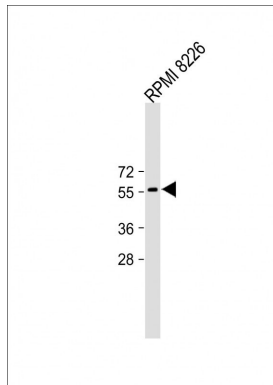
Cellular Location

Apical cell membrane {ECO:0000250|UniProtKB:Q91WN3}; Multi-pass membrane protein

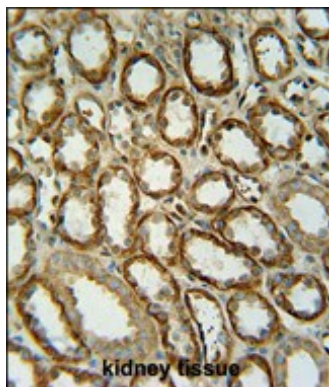
Tissue Location

Expressed in the kidney.

Images



All lanes : Anti-SLC7A13 Antibody (Center) at 1:500 dilution
Lane 1: RPMI 8226 whole cell lysate
Lysates/proteins at 20 µg per lane. Secondary Goat Anti-Rabbit IgG, (H+L), Peroxidase conjugated (ASP1615) at 1/15000 dilution. Observed band size : 55kDa
Blocking/Dilution buffer: 5% NFDM/TBST.



SLC7A13 antibody(Center) (Cat. #AP10029c) immunohistochemistry analysis in formalin fixed and paraffin embedded human kidney tissue followed by peroxidase conjugation of the secondary antibody and DAB staining. This data demonstrates the use of the SLC7A13 antibody(Center) for immunohistochemistry. Clinical relevance has not been evaluated.

Please note: All products are 'FOR RESEARCH USE ONLY. NOT FOR USE IN DIAGNOSTIC OR THERAPEUTIC PROCEDURES'.