

POTEB Antibody (C-term)

Affinity Purified Rabbit Polyclonal Antibody (Pab)

Catalog # AP10032b

Product Information

Application	IHC-P, FC, WB, E
Primary Accession	Q6S5H4
Other Accession	P0CG39 , P0CG38 , A5A3E0 , Q86YR6 , B2RU33 , H3BUK9 , NP_997238.2
Reactivity	Human
Host	Rabbit
Clonality	Polyclonal
Isotype	Rabbit IgG
Clone Names	RB27621
Antigen Region	381-410

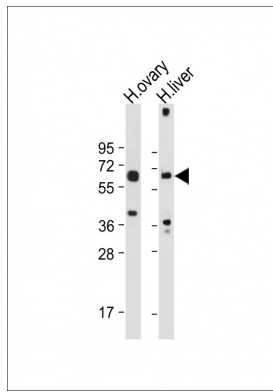
Additional Information

Other Names	POTE ankyrin domain family member B, ANKRD26-like family B member 1, Prostate, ovary, testis-expressed protein on chromosome 15, POTE-15, POTEB, A26B1, POTE15
Target/Specificity	This POTEB antibody is generated from rabbits immunized with a KLH conjugated synthetic peptide between 381-410 amino acids from the C-terminal region of human POTEB.
Dilution	IHC-P~~1:100~500 FC~~1:10~50 WB~~1:1000 E~~Use at an assay dependent concentration.
Format	Purified polyclonal antibody supplied in PBS with 0.09% (W/V) sodium azide. This antibody is purified through a protein A column, followed by peptide affinity purification.
Storage	Maintain refrigerated at 2-8°C for up to 2 weeks. For long term storage store at -20°C in small aliquots to prevent freeze-thaw cycles.
Precautions	POTEB Antibody (C-term) is for research use only and not for use in diagnostic or therapeutic procedures.

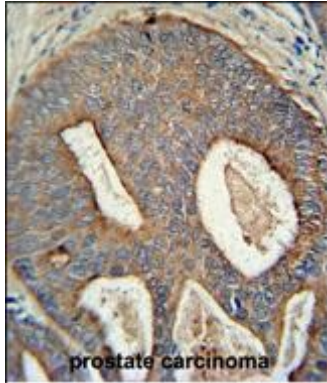
Protein Information

Images

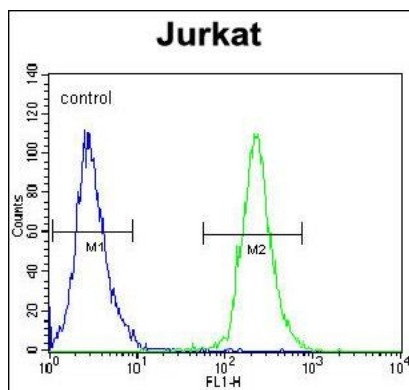
All lanes : Anti-POTEB Antibody (C-term) at 1:2000 dilution
Lane 1: Human ovary tissue lysate Lane 2: Human liver



tissue lysate Lysates/proteins at 20 µg per lane.
Secondary Goat Anti-Rabbit IgG, (H+L), Peroxidase
conjugated at 1/10000 dilution. Predicted band size : 66
kDa Blocking/Dilution buffer: 5% NFDM/TBST.



POTEb antibody (C-term) (Cat. #AP10032b)
immunohistochemistry analysis in formalin fixed and
paraffin embedded human prostate carcinoma followed
by peroxidase conjugation of the secondary antibody and
DAB staining. This data demonstrates the use of the
POTEb antibody (C-term) for immunohistochemistry.
Clinical relevance has not been evaluated.



POTEb Antibody (C-term) (Cat. #AP10032b) flow
cytometric analysis of Jurkat cells (right histogram)
compared to a negative control cell (left
histogram). FITC-conjugated goat-anti-rabbit secondary
antibodies were used for the analysis.

Please note: All products are 'FOR RESEARCH USE ONLY. NOT FOR USE IN DIAGNOSTIC OR THERAPEUTIC PROCEDURES'.