

S35B2 Antibody (C-term)

Affinity Purified Rabbit Polyclonal Antibody (Pab)

Catalog # AP10039b

Product Information

Application	WB, IHC-P, E
Primary Accession	Q8TB61
Other Accession	NP_835361.1
Reactivity	Human, Mouse
Host	Rabbit
Clonality	Polyclonal
Isotype	Rabbit IgG
Clone Names	RB27648
Calculated MW	47515
Antigen Region	393-421

Additional Information

Gene ID	347734
Other Names	Adenosine 3'-phospho 5'-phosphosulfate transporter 1, PAPS transporter 1, Putative MAPK-activating protein PM15, Putative NF-kappa-B-activating protein 48, Solute carrier family 35 member B2, SLC35B2, PAPST1
Target/Specificity	This S35B2 antibody is generated from rabbits immunized with a KLH conjugated synthetic peptide between 393-421 amino acids from the C-terminal region of human S35B2.
Dilution	WB~~1:1000 IHC-P~~1:100~500 E~~Use at an assay dependent concentration.
Format	Purified polyclonal antibody supplied in PBS with 0.09% (W/V) sodium azide. This antibody is purified through a protein A column, followed by peptide affinity purification.
Storage	Maintain refrigerated at 2-8°C for up to 2 weeks. For long term storage store at -20°C in small aliquots to prevent freeze-thaw cycles.
Precautions	S35B2 Antibody (C-term) is for research use only and not for use in diagnostic or therapeutic procedures.

Protein Information

Name	SLC35B2 (HGNC:16872)
Function	Probably functions as a 3'-phosphoadenylyl sulfate:adenosine 3',5'-bisphosphate antiporter at the Golgi membranes. Mediates the transport

from the cytosol into the lumen of the Golgi of 3'-phosphoadenylyl sulfate/adenosine 3'-phospho 5'-phosphosulfate (PAPS), a universal sulfuryl donor for sulfation events that take place in that compartment.

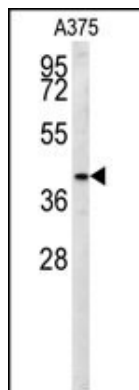
Cellular Location

Golgi apparatus membrane; Multi-pass membrane protein

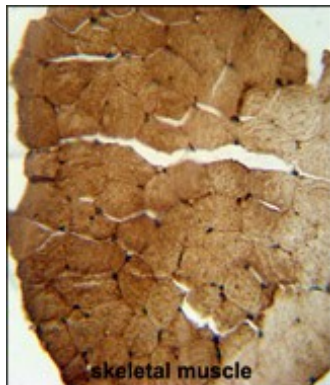
Tissue Location

Highly expressed in the placenta, pancreas, mammary gland and skeletal muscle. Weakly or not expressed in colon, heart and prostate (PubMed:12716889). Expressed in the brain, predominantly in frontal lobe gray matter, subcortical frontal white matter and cerebellum (PubMed:35325049).

Images



S35B2 Antibody (C-term) (Cat. #AP10039b) western blot analysis in A375 cell line lysates (35ug/lane). This demonstrates the S35B2 antibody detected the S35B2 protein (arrow).



S35B2 antibody (C-term) (Cat. #AP10039b) immunohistochemistry analysis in formalin fixed and paraffin embedded human skeletal muscle followed by peroxidase conjugation of the secondary antibody and DAB staining. This data demonstrates the use of the S35B2 antibody (C-term) for immunohistochemistry. Clinical relevance has not been evaluated.

Please note: All products are 'FOR RESEARCH USE ONLY. NOT FOR USE IN DIAGNOSTIC OR THERAPEUTIC PROCEDURES'.