

# C11orf46 Antibody (C-term)

Affinity Purified Rabbit Polyclonal Antibody (Pab)

Catalog # AP10061b

## Product Information

---

<b>Application</b>	WB, E
<b>Primary Accession</b>	<a href="#">Q8N8R7</a>
<b>Other Accession</b>	<a href="#">Q5FVK8</a> , <a href="#">Q8BIX3</a> , <a href="#">Q5EA92</a> , <a href="#">NP_689529.1</a>
<b>Reactivity</b>	Human
<b>Predicted</b>	Bovine, Mouse, Rat
<b>Host</b>	Rabbit
<b>Clonality</b>	Polyclonal
<b>Isotype</b>	Rabbit IgG
<b>Clone Names</b>	RB27715
<b>Calculated MW</b>	29338
<b>Antigen Region</b>	228-257

## Additional Information

---

<b>Gene ID</b>	120534
<b>Other Names</b>	ARL14 effector protein, ARF7 effector protein, ARL14EP, ARF7EP, C11orf46
<b>Target/Specificity</b>	This C11orf46 antibody is generated from rabbits immunized with a KLH conjugated synthetic peptide between 228-257 amino acids from the C-terminal region of human C11orf46.
<b>Dilution</b>	WB~~1:1000 E~~Use at an assay dependent concentration.
<b>Format</b>	Purified polyclonal antibody supplied in PBS with 0.09% (W/V) sodium azide. This antibody is purified through a protein A column, followed by peptide affinity purification.
<b>Storage</b>	Maintain refrigerated at 2-8°C for up to 2 weeks. For long term storage store at -20°C in small aliquots to prevent freeze-thaw cycles.
<b>Precautions</b>	C11orf46 Antibody (C-term) is for research use only and not for use in diagnostic or therapeutic procedures.

## Protein Information

---

<b>Name</b>	ARL14EP
<b>Synonyms</b>	ARF7EP, C11orf46
<b>Function</b>	Through its interaction with ARL14 and MYO1E, may connect MHC class

II-containing cytoplasmic vesicles to the actin network and hence controls the movement of these vesicles along the actin cytoskeleton in dendritic cells.

**Cellular Location**

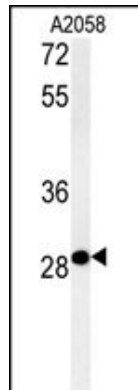
Cytoplasm.

**Tissue Location**

Expressed in the immune system.

## Images

---



C11orf46 Antibody (C-term) (Cat. #AP10061b) western blot analysis in A2058 cell line lysates (35ug/lane). This demonstrates the C11orf46 antibody detected the C11orf46 protein (arrow).

Please note: All products are 'FOR RESEARCH USE ONLY. NOT FOR USE IN DIAGNOSTIC OR THERAPEUTIC PROCEDURES'.