

# LGALS9B Antibody (Center)

Affinity Purified Rabbit Polyclonal Antibody (Pab)

Catalog # AP10065c

## Product Information

---

<b>Application</b>	WB, FC, E
<b>Primary Accession</b>	<a href="#">Q3B8N2</a>
<b>Other Accession</b>	<a href="#">Q6DKI2</a> , <a href="#">NP_001036150.1</a>
<b>Reactivity</b>	Human, Mouse
<b>Host</b>	Rabbit
<b>Clonality</b>	Polyclonal
<b>Isotype</b>	Rabbit IgG
<b>Clone Names</b>	RB27723
<b>Calculated MW</b>	39660
<b>Antigen Region</b>	160-188

## Additional Information

---

<b>Gene ID</b>	284194
<b>Other Names</b>	Galectin-9B, Gal-9B, Galectin-9-like protein A, LGALS9B
<b>Target/Specificity</b>	This LGALS9B antibody is generated from rabbits immunized with a KLH conjugated synthetic peptide between 160-188 amino acids from the Central region of human LGALS9B.
<b>Dilution</b>	WB~~1:1000 FC~~1:10~50 E~~Use at an assay dependent concentration.
<b>Format</b>	Purified polyclonal antibody supplied in PBS with 0.09% (W/V) sodium azide. This antibody is purified through a protein A column, followed by peptide affinity purification.
<b>Storage</b>	Maintain refrigerated at 2-8°C for up to 2 weeks. For long term storage store at -20°C in small aliquots to prevent freeze-thaw cycles.
<b>Precautions</b>	LGALS9B Antibody (Center) is for research use only and not for use in diagnostic or therapeutic procedures.

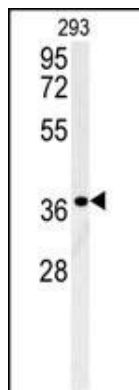
## Protein Information

---

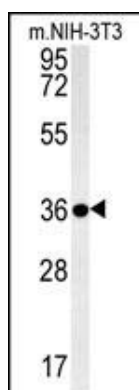
<b>Name</b>	LGALS9B
<b>Function</b>	Binds galactosides.

## Images

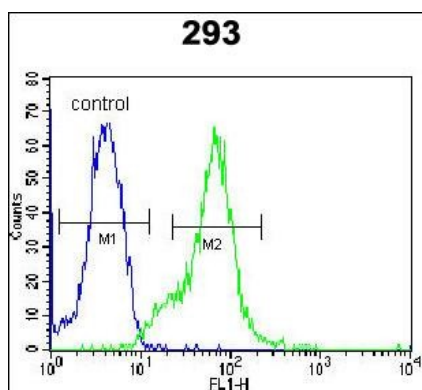
---



LGALS9B Antibody (Center) (Cat. #AP10065c) western blot analysis in 293 cell line lysates (35ug/lane). This demonstrates the LGALS9B antibody detected the LGALS9B protein (arrow).



LGALS9B Antibody (Center) (Cat. #AP10065c) western blot analysis in mouse NIH-3T3 cell line lysates (35ug/lane). This demonstrates the LGALS9B antibody detected the LGALS9B protein (arrow).



LGALS9B Antibody (Center) (Cat. #AP10065c) flow cytometric analysis of 293 cells (right histogram) compared to a negative control cell (left histogram). FITC-conjugated goat-anti-rabbit secondary antibodies were used for the analysis.

Please note: All products are 'FOR RESEARCH USE ONLY. NOT FOR USE IN DIAGNOSTIC OR THERAPEUTIC PROCEDURES'.