

APOF Antibody (Center)

Affinity Purified Rabbit Polyclonal Antibody (Pab)
Catalog # AP10107c

Product Information

Application	WB, IHC-P, E
Primary Accession	Q13790
Other Accession	NP_001629.1
Reactivity	Human
Host	Rabbit
Clonality	Polyclonal
Isotype	Rabbit IgG
Clone Names	RB18681
Calculated MW	35399
Antigen Region	111-138

Additional Information

Gene ID	319
Other Names	Apolipoprotein F, Apo-F, Lipid transfer inhibitor protein, LTIP, APOF
Target/Specificity	This APOF antibody is generated from rabbits immunized with a KLH conjugated synthetic peptide between 111-138 amino acids from the Central region of human APOF.
Dilution	WB~~1:1000 IHC-P~~1:100~500 E~~Use at an assay dependent concentration.
Format	Purified polyclonal antibody supplied in PBS with 0.09% (W/V) sodium azide. This antibody is purified through a protein A column, followed by peptide affinity purification.
Storage	Maintain refrigerated at 2-8°C for up to 2 weeks. For long term storage store at -20°C in small aliquots to prevent freeze-thaw cycles.
Precautions	APOF Antibody (Center) is for research use only and not for use in diagnostic or therapeutic procedures.

Protein Information

Name	APOF
Function	Minor apolipoprotein that associates with LDL. Inhibits cholesteryl ester transfer protein (CETP) activity and appears to be an important regulator of cholesterol transport. Also associates to a lesser degree with VLDL, Apo-AI and Apo-AII.

Cellular Location Secreted

Tissue Location Expressed by the liver and secreted in plasma.

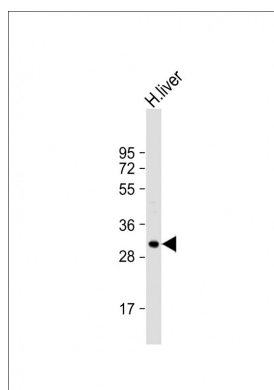
Background

The product of this gene is one of the minor apolipoproteins found in plasma. This protein forms complexes with lipoproteins and may be involved in transport and/or esterification of cholesterol.

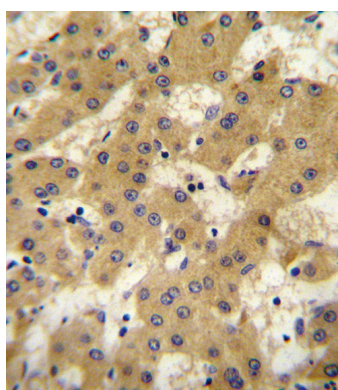
References

Ruano, G., et al. Pharmacogenomics 11(7):959-971(2010)
Mosbruger, T.L., et al. J. Infect. Dis. 201(9):1371-1380(2010)
Chen, S.N., et al. BMC Med. Genet. 10, 111 (2009) :
He, Y., et al. J. Lipid Res. 49(7):1529-1537(2008)
Morton, R.E., et al. J. Lipid Res. 49(1):127-135(2008)

Images



Anti-APOF Antibody (Center) at 1:1000 dilution + human liver lysate Lysates/proteins at 20 µg per lane. Secondary Goat Anti-Rabbit IgG, (H+L), Peroxidase conjugated at 1/10000 dilution. Predicted band size : 35 kDa
Blocking/Dilution buffer: 5% NFD/MTBST.



APOF antibody (Center) (Cat. #AP10107c) immunohistochemistry analysis in formalin fixed and paraffin embedded human hepatocarcinoma followed by peroxidase conjugation of the secondary antibody and DAB staining. This data demonstrates the use of the APOF antibody (Center) for immunohistochemistry. Clinical relevance has not been evaluated.

Please note: All products are 'FOR RESEARCH USE ONLY. NOT FOR USE IN DIAGNOSTIC OR THERAPEUTIC PROCEDURES'.