

# APOL6 Antibody (Center)

Affinity Purified Rabbit Polyclonal Antibody (Pab)

Catalog # AP10113c

## Product Information

---

|                          |                             |
|--------------------------|-----------------------------|
| <b>Application</b>       | WB, IHC-P, FC, E            |
| <b>Primary Accession</b> | <a href="#">Q9BWW8</a>      |
| <b>Other Accession</b>   | <a href="#">NP_085144.1</a> |
| <b>Reactivity</b>        | Human                       |
| <b>Host</b>              | Rabbit                      |
| <b>Clonality</b>         | Polyclonal                  |
| <b>Isotype</b>           | Rabbit IgG                  |
| <b>Clone Names</b>       | RB19166                     |
| <b>Calculated MW</b>     | 38128                       |
| <b>Antigen Region</b>    | 126-155                     |

## Additional Information

---

|                           |  |
|---------------------------|--|
| <b>Gene ID</b>            | 80830  |
| <b>Other Names</b>        | Apolipoprotein L6, Apolipoprotein L-VI, ApoL-VI, APOL6   |
| <b>Target/Specificity</b> | This APOL6 antibody is generated from rabbits immunized with a KLH conjugated synthetic peptide between 126-155 amino acids from the Central region of human APOL6.          |
| <b>Dilution</b>           | WB~~1:1000 IHC-P~~1:100~500 FC~~1:10~50 E~~Use at an assay dependent concentration.  |
| <b>Format</b>             | Purified polyclonal antibody supplied in PBS with 0.09% (W/V) sodium azide. This antibody is purified through a protein A column, followed by peptide affinity purification. |
| <b>Storage</b>            | Maintain refrigerated at 2-8°C for up to 2 weeks. For long term storage store at -20°C in small aliquots to prevent freeze-thaw cycles.                                      |
| <b>Precautions</b>        | APOL6 Antibody (Center) is for research use only and not for use in diagnostic or therapeutic procedures.  |

## Protein Information

---

|                 |  |
|-----------------|--|
| <b>Name</b>     | APOL6  |
| <b>Function</b> | May affect the movement of lipids in the cytoplasm or allow the binding of lipids to organelles. |

|                          |  |
|--------------------------|--|
| <b>Cellular Location</b> | Cytoplasm.   |
| <b>Tissue Location</b>   | Widely expressed; highly expressed in the uterus, fetal brain and spinal cord, also detected in heart, liver, lung, colon, spleen, thymus, prostate, placenta, adrenal gland, salivary and mammary gland |

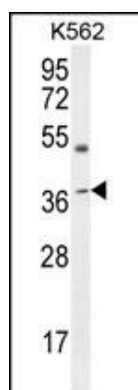
## Background

This gene is a member of the apolipoprotein L gene family. The encoded protein is found in the cytoplasm, where it may affect the movement of lipids or allow the binding of lipids to organelles.

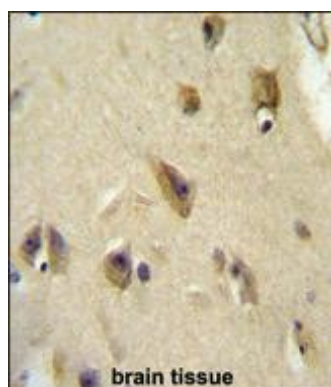
## References

Smith, E.E., et al. Genome Res. 19(5):850-858(2009)  
Liu, Y.L., et al. Biol. Psychiatry 64(9):789-796(2008)  
Liu, Z., et al. Mol. Cancer Res. 3(1):21-31(2005)  
Collins, J.E., et al. Genome Biol. 5 (10), R84 (2004) :  
Clark, H.F., et al. Genome Res. 13(10):2265-2270(2003)

## Images

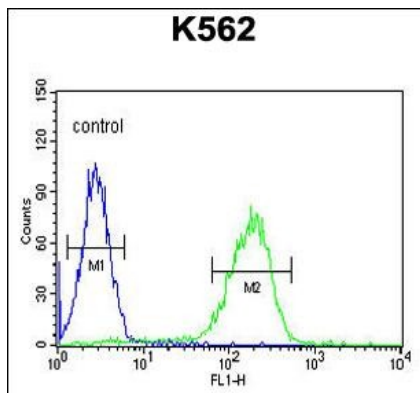


APOL6 Antibody (Center) (Cat. #AP10113c) western blot analysis in K562 cell line lysates (35ug/lane). This demonstrates the APOL6 antibody detected the APOL6 protein (arrow).



APOL6 Antibody (Center) (Cat. #AP10113c) immunohistochemistry analysis in formalin fixed and paraffin embedded human brain tissue followed by peroxidase conjugation of the secondary antibody and DAB staining. This data demonstrates the use of the APOL6 Antibody (Center) for immunohistochemistry. Clinical relevance has not been evaluated.

APOL6 Antibody (Center) (Cat. #AP10113c) flow cytometric analysis of K562 cells (right histogram) compared to a negative control cell (left histogram). FITC-conjugated goat-anti-rabbit secondary antibodies were used for the analysis.



Please note: All products are 'FOR RESEARCH USE ONLY. NOT FOR USE IN DIAGNOSTIC OR THERAPEUTIC PROCEDURES'.