

BTG2 Antibody (N-term)

Affinity Purified Rabbit Polyclonal Antibody (Pab)

Catalog # AP10121a

Product Information

Application	WB, IHC-P, E
Primary Accession	P78543
Other Accession	NP_006754.1
Reactivity	Human
Host	Rabbit
Clonality	Polyclonal
Isotype	Rabbit IgG
Clone Names	RB19736
Calculated MW	17416
Antigen Region	33-61

Additional Information

Gene ID	7832
Other Names	Protein BTG2, BTG family member 2, NGF-inducible anti-proliferative protein PC3, BTG2, PC3
Target/Specificity	This BTG2 antibody is generated from rabbits immunized with a KLH conjugated synthetic peptide between 33-61 amino acids from the N-terminal region of human BTG2.
Dilution	WB~~1:1000 IHC-P~~1:100~500 E~~Use at an assay dependent concentration.
Format	Purified polyclonal antibody supplied in PBS with 0.05% (V/V) Proclin 300. This antibody is prepared by Saturated Ammonium Sulfate (SAS) precipitation followed by dialysis against PBS.
Storage	Maintain refrigerated at 2-8°C for up to 2 weeks. For long term storage store at -20°C in small aliquots to prevent freeze-thaw cycles.
Precautions	BTG2 Antibody (N-term) is for research use only and not for use in diagnostic or therapeutic procedures.

Protein Information

Name	BTG2
Synonyms	PC3
Function	Anti-proliferative protein; the function is mediated by association with

deadenylase subunits of the CCR4-NOT complex. Activates mRNA deadenylation in a CNOT6 and CNOT7-dependent manner. In vitro can inhibit deadenylase activity of CNOT7 and CNOT8. Involved in cell cycle regulation. Could be involved in the growth arrest and differentiation of the neuronal precursors (By similarity). Modulates transcription regulation mediated by ESR1. Involved in mitochondrial depolarization and neurite outgrowth.

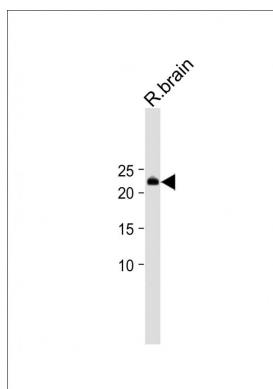
Background

The protein encoded by this gene is a member of the BTG/Tob family. This family has structurally related proteins that appear to have antiproliferative properties. This encoded protein is involved in the regulation of the G1/S transition of the cell cycle.

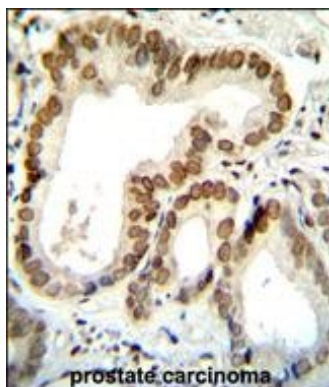
References

Zhang, L., et al. Mol. Biol. Rep. 37(6):2579-2586(2010)
Mollerstrom, E., et al. BMC Cancer 10, 296 (2010) :
Park, T.J., et al. Exp. Cell Res. 315(18):3152-3162(2009)
Liu, M., et al. Cell Res. 19(7):828-837(2009)
Farioli-Vecchioli, S., et al. PLoS ONE 4 (12), E8339 (2009) :

Images



All lanes: Anti-BTG2 Antibody (N-term) at 1:2000 dilution + Rat brain lysate Lysates/proteins at 20 µg per lane. Secondary: Goat Anti-Rabbit IgG, (H+L), Peroxidase conjugated (ASP1615) at 1/15000 dilution. Observed band size: 22 KDa Blocking/Dilution buffer: 5% NFDm/TBST.



BTG2 Antibody (N-term) (Cat. #AP10121a) immunohistochemistry analysis in formalin fixed and paraffin embedded human prostate carcinoma followed by peroxidase conjugation of the secondary antibody and DAB staining. This data demonstrates the use of BTG2 Antibody (N-term) for immunohistochemistry. Clinical relevance has not been evaluated.

Citations

- [Upregulation of B-cell translocation gene 2 by epigallocatechin-3-gallate via p38 and ERK signaling blocks cell proliferation in human oral squamous cell carcinoma cells.](#)

Please note: All products are 'FOR RESEARCH USE ONLY. NOT FOR USE IN DIAGNOSTIC OR THERAPEUTIC PROCEDURES'.