

# TIMP4 Antibody (Center)

Affinity Purified Rabbit Polyclonal Antibody (Pab)

Catalog # AP10148c

## Product Information

---

<b>Application</b>	WB, IHC-P, E
<b>Primary Accession</b>	<a href="#">Q99727</a>
<b>Other Accession</b>	<a href="#">NP_003247.1</a>
<b>Reactivity</b>	Human, Mouse
<b>Host</b>	Rabbit
<b>Clonality</b>	Polyclonal
<b>Isotype</b>	Rabbit IgG
<b>Clone Names</b>	RB22433
<b>Calculated MW</b>	25503
<b>Antigen Region</b>	48-74

## Additional Information

---

<b>Gene ID</b>	7079
<b>Other Names</b>	Metalloproteinase inhibitor 4, Tissue inhibitor of metalloproteinases 4, TIMP-4, TIMP4
<b>Target/Specificity</b>	This TIMP4 antibody is generated from rabbits immunized with a KLH conjugated synthetic peptide between 48-74 amino acids from the Central region of human TIMP4.
<b>Dilution</b>	WB~~1:1000 IHC-P~~1:100~500 E~~Use at an assay dependent concentration.
<b>Format</b>	Purified polyclonal antibody supplied in PBS with 0.09% (W/V) sodium azide. This antibody is purified through a protein A column, followed by peptide affinity purification.
<b>Storage</b>	Maintain refrigerated at 2-8°C for up to 2 weeks. For long term storage store at -20°C in small aliquots to prevent freeze-thaw cycles.
<b>Precautions</b>	TIMP4 Antibody (Center) is for research use only and not for use in diagnostic or therapeutic procedures.

## Protein Information

---

<b>Name</b>	TIMP4
<b>Function</b>	Complexes with metalloproteinases (such as collagenases) and irreversibly inactivates them by binding to their catalytic zinc cofactor. Known to act on MMP-1, MMP-2, MMP-3, MMP-7 and MMP-9.

<b>Cellular Location</b>	Secreted.
<b>Tissue Location</b>	Abundant in heart and present at low levels in many other tissues

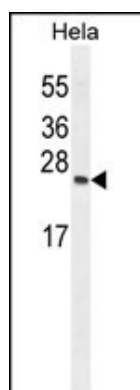
## Background

This gene belongs to the TIMP gene family. The proteins encoded by this gene family are inhibitors of the matrix metalloproteinases, a group of peptidases involved in degradation of the extracellular matrix. The secreted, netrin domain-containing protein encoded by this gene is involved in regulation of platelet aggregation and recruitment and may play role in hormonal regulation and endometrial tissue remodeling.

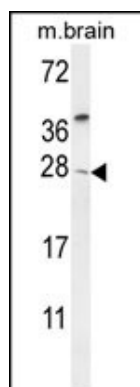
## References

Nalpas, B., et al. Gut 59(8):1120-1126(2010)  
 Bailey, S.D., et al. Diabetes Care (2010) In press :  
 Wojciechowski, R., et al. Invest. Ophthalmol. Vis. Sci. (2010) In press :  
 Talmud, P.J., et al. Am. J. Hum. Genet. 85(5):628-642(2009)  
 Liss, M., et al. Am. J. Pathol. 175(3):940-946(2009)

## Images

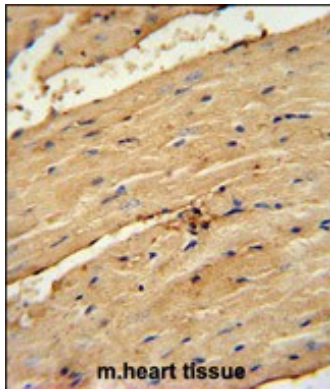


TIMP4 Antibody (Center) (Cat. #AP10148c) western blot analysis in HeLa cell line lysates (35ug/lane). This demonstrates the TIMP4 antibody detected the TIMP4 protein (arrow).



TIMP4 Antibody (Center) (Cat. #AP10148c) western blot analysis in mouse brain tissue lysates (35ug/lane). This demonstrates the TIMP4 antibody detected the TIMP4 protein (arrow).

TIMP4 Antibody (Center) (Cat. #AP10148c) immunohistochemistry analysis in formalin fixed and paraffin embedded mouse heart tissue followed by peroxidase conjugation of the secondary antibody and DAB staining. This data demonstrates the use of the TIMP4 Antibody (Center) for immunohistochemistry. Clinical relevance has not been evaluated.



Please note: All products are 'FOR RESEARCH USE ONLY. NOT FOR USE IN DIAGNOSTIC OR THERAPEUTIC PROCEDURES'.