

# V5 Tag Antibody

Purified Rabbit Polyclonal Antibody (Pab)

Catalog # AP1014a

## Product Information

---

<b>Application</b>	WB, E
<b>Host</b>	Rabbit
<b>Clonality</b>	Polyclonal
<b>Isotype</b>	Rabbit IgG
<b>Clone Names</b>	RB0413

## Additional Information

---

<b>Other Names</b>	Tag from influenza hemagglutinin protein
<b>Target/Specificity</b>	KLH conjugated synthetic peptide encoding the V5 tag (GKIPNPLLGLDST) was used as antigen.
<b>Dilution</b>	WB~~1:2000 E~~Use at an assay dependent concentration.
<b>Format</b>	Purified polyclonal antibody supplied in PBS with 0.09% (W/V) sodium azide. This antibody is prepared by Saturated Ammonium Sulfate (SAS) precipitation followed by dialysis against PBS.
<b>Storage</b>	Maintain refrigerated at 2-8°C for up to 2 weeks. For long term storage store at -20°C in small aliquots to prevent freeze-thaw cycles.
<b>Precautions</b>	V5 Tag Antibody is for research use only and not for use in diagnostic or therapeutic procedures.

## Background

---

Epitope tags consisting of short sequences recognized by well-characterized antibodies have been widely used in the study of protein expression in various systems. The V5 epitope tag is composed of a 14 residue peptide, GKIPNPLLGLDST, derived from a small epitope (Pk) present on the P and V proteins of the paramyxovirus of simian virus 5 (SV5). Abgent's anti-V5 tag polyclonal antibody provides a simple solution to detect the expression of a V5-tagged protein in cells.

## References

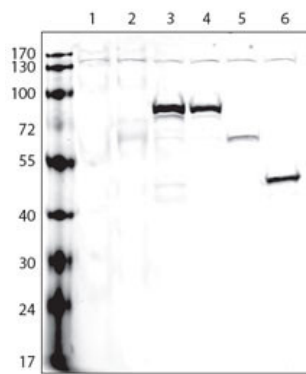
---

Dunn C, et al. J Immunol Methods. 1999 Apr 22;224(1-2):141-50.

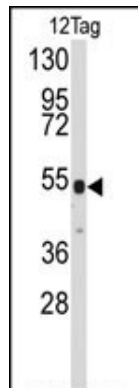
## Images

---

Lanes: 1:non-transfected cells; 2:V5-tagged empty



plasmid; 3:protein A (V5-tagged); 4:protein B (V5-tagged); 5:protein C (V5-tagged); 6:protein D (V5-tagged); Protocol and data courtesy of Dr. Gustavo Gutierrez, Burnham Institute for Medical Research.



Western blot analysis of anti-V5 Tag Antibody (Cat.#AP1014a) in 12tag protein (35ug/lane). 12 Tag (arrow) was detected using the purified Pab.

Please note: All products are 'FOR RESEARCH USE ONLY. NOT FOR USE IN DIAGNOSTIC OR THERAPEUTIC PROCEDURES'.