

# VSV-g Tag Antibody

Purified Rabbit Polyclonal Antibody (Pab)

Catalog # AP1016a

## Product Information

---

<b>Application</b>	WB, E
<b>Reactivity</b>	Human
<b>Host</b>	Rabbit
<b>Clonality</b>	Polyclonal
<b>Isotype</b>	Rabbit IgG
<b>Clone Names</b>	RB0418

## Additional Information

---

<b>Target/Specificity</b>	KLH conjugated synthetic peptide encoding VSV-g tag (CYTDIEMNRLGK) was used as antigen.
<b>Dilution</b>	WB~~1:1000 E~~Use at an assay dependent concentration.
<b>Format</b>	Purified polyclonal antibody supplied in PBS with 0.09% (W/V) sodium azide. This antibody is prepared by Saturated Ammonium Sulfate (SAS) precipitation followed by dialysis against PBS.
<b>Storage</b>	Maintain refrigerated at 2-8°C for up to 2 weeks. For long term storage store at -20°C in small aliquots to prevent freeze-thaw cycles.
<b>Precautions</b>	VSV-g Tag Antibody is for research use only and not for use in diagnostic or therapeutic procedures.

## Background

---

Epitope tags consisting of short sequences recognized by well-characterized antibodies have been widely used in the study of protein expression in various systems. VSV-g is an epitope tag composed of an 11 residue peptide, YTDIEMNRLGK, derived from the Vesicular Stomatitis viral glycoprotein. Abgent's anti-VSV-g polyclonal antibody provides a simple solution to detect the expression of a VSV-g-tagged protein in cells.

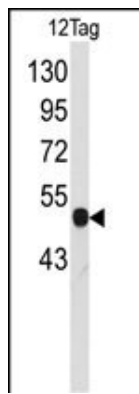
## References

---

Proc Natl Acad Sci U S A. 1997 Nov 25;94(24):13329-34.  
J Virol. 1998 Jan;72(1):428-35.  
J Virol. 2002 Dec;76(23):12300-11.

## Images

---



Western blot analysis of anti-Tag-VSV-G Pab (Cat. #AP1016a) in 12tag cell line lysates (35ug/lane). Tag-VSV-G(arrow) was detected using the purified Pab.

## Citations

---

- [Severe Acute Respiratory Syndrome Coronavirus 2 \(SARS-CoV-2\) Membrane \(M\) and Spike \(S\) Proteins Antagonize Host Type I Interferon Response](#)
- [Acetylation-Dependent Deubiquitinase OTUD3 Controls MAVS Activation in Innate Antiviral Immunity](#)
- [NEUCODE LABELS FOR MULTIPLEXED, ABSOLUTE PROTEIN QUANTIFICATION](#)

Please note: All products are 'FOR RESEARCH USE ONLY. NOT FOR USE IN DIAGNOSTIC OR THERAPEUTIC PROCEDURES'.