

PROC Antibody

Purified Rabbit Polyclonal Antibody (Pab)

Catalog # AP1017a

Product Information

Application	WB, E
Primary Accession	P04070
Reactivity	Human
Predicted	Human
Host	Rabbit
Clonality	Polyclonal
Isotype	Rabbit IgG
Clone Names	RB0420
Calculated MW	52071

Additional Information

Gene ID	5624
Other Names	Vitamin K-dependent protein C, Anticoagulant protein C, Autoprothrombin IIA, Blood coagulation factor XIV, Vitamin K-dependent protein C light chain, Vitamin K-dependent protein C heavy chain, Activation peptide, PROC
Target/Specificity	KLH conjugated synthetic peptide encoding the Protein-C epitope tag (CEDQVDPRLIDGK) was used as antigen.
Dilution	WB~~1:1000 E~~Use at an assay dependent concentration.
Format	Purified polyclonal antibody supplied in PBS with 0.09% (W/V) sodium azide. This antibody is prepared by Saturated Ammonium Sulfate (SAS) precipitation followed by dialysis against PBS.
Storage	Maintain refrigerated at 2-8°C for up to 2 weeks. For long term storage store at -20°C in small aliquots to prevent freeze-thaw cycles.
Precautions	PROC Antibody is for research use only and not for use in diagnostic or therapeutic procedures.

Protein Information

Name	PROC
Function	Protein C is a vitamin K-dependent serine protease that regulates blood coagulation by inactivating factors Va and VIIIa in the presence of calcium ions and phospholipids (PubMed: 25618265). Exerts a protective effect on the endothelial cell barrier function (PubMed: 25651845).

Cellular Location	Secreted. Golgi apparatus Endoplasmic reticulum
Tissue Location	Plasma; synthesized in the liver.

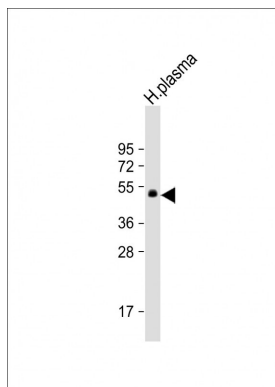
Background

Epitope tags consisting of short sequences recognized by well-characterized antibodies have been widely used in the study of protein expression in various systems. The epitope tag composed of a 12 residue peptide, EDQVDPRLIDGK, is derived from Protein-C, a vitamin K-dependent serine protease that regulates blood coagulation by inactivating factors Va and VIIIa in the presence of calcium ions and phospholipids. Abgent's anti-Protein-C polyclonal antibody provides a simple solution to detect the expression of a Protein-C epitope-tagged protein in cells.

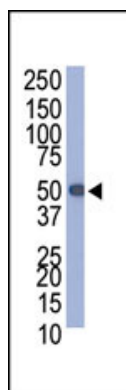
References

Lichty JJ, Malecki JL, Agnew HD, Michelson-Horowitz DJ, Tan S. Comparison of affinity tags for protein purification. *Protein Expr Purif.* 2005 May;41(1):98-105.

Images



Anti-PROC Antibody at 1:1000 dilution + H.plasma whole cell lysate Lysates/proteins at 20 µg per lane. Secondary Goat Anti-Rabbit IgG, (H+L), Peroxidase conjugated at 1/10000 dilution. Predicted band size : 52 kDa
Blocking/Dilution buffer: 5% NFDm/TBST.



Western blot analysis of anti-Protein-C tag Pab (Cat. #AP1017a) in Protein-C-tagged recombinant protein bacterial lysate.

Please note: All products are 'FOR RESEARCH USE ONLY. NOT FOR USE IN DIAGNOSTIC OR THERAPEUTIC PROCEDURES'.