

# CHPT1 Antibody (N-term)

Affinity Purified Rabbit Polyclonal Antibody (Pab)

Catalog # AP10186a

## Product Information

---

<b>Application</b>	WB, FC, E
<b>Primary Accession</b>	<a href="#">Q8WUD6</a>
<b>Other Accession</b>	<a href="#">Q8C025</a> , <a href="#">Q1LZE6</a> , <a href="#">Q8WUD6-2</a> , <a href="#">NP_064629.2</a>
<b>Reactivity</b>	Human
<b>Predicted</b>	Bovine, Mouse
<b>Host</b>	Rabbit
<b>Clonality</b>	Polyclonal
<b>Isotype</b>	Rabbit IgG
<b>Clone Names</b>	RB23861
<b>Calculated MW</b>	45097
<b>Antigen Region</b>	7-33

## Additional Information

---

<b>Gene ID</b>	56994
<b>Other Names</b>	Cholinephosphotransferase 1, hCPT1, AAPT1-like protein, Diacylglycerol cholinephosphotransferase 1, CHPT1, CPT1
<b>Target/Specificity</b>	This CHPT1 antibody is generated from rabbits immunized with a KLH conjugated synthetic peptide between 7-33 amino acids from the N-terminal region of human CHPT1.
<b>Dilution</b>	WB~~1:2000 FC~~1:10~50 E~~Use at an assay dependent concentration.
<b>Format</b>	Purified polyclonal antibody supplied in PBS with 0.09% (W/V) sodium azide. This antibody is purified through a protein A column, followed by peptide affinity purification.
<b>Storage</b>	Maintain refrigerated at 2-8°C for up to 2 weeks. For long term storage store at -20°C in small aliquots to prevent freeze-thaw cycles.
<b>Precautions</b>	CHPT1 Antibody (N-term) is for research use only and not for use in diagnostic or therapeutic procedures.

## Protein Information

---

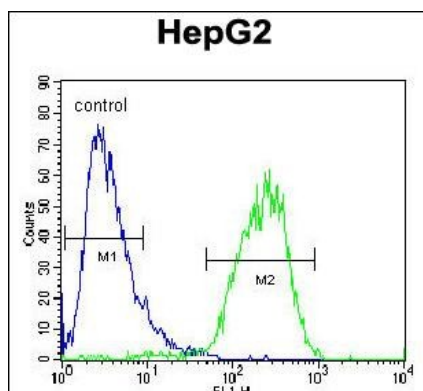
<b>Name</b>	CHPT1 ( <a href="#">HGNC:17852</a> )
<b>Synonyms</b>	CPT1

<b>Function</b>	Catalyzes the final step of de novo phosphatidylcholine (PC) synthesis, i.e. the transfer of choline phosphate from CDP-choline to the free hydroxyl of a diacylglycerol (DAG), producing a PC. It thereby plays a central role in the formation and maintenance of vesicular membranes.
<b>Cellular Location</b>	Golgi apparatus membrane; Multi-pass membrane protein
<b>Tissue Location</b>	Highly expressed in testis, colon, small intestine, heart, prostate and spleen. Also detected in kidney, skeletal muscle, pancreas, leukocytes, ovary and thymus. Weakly expressed in the brain, placenta and lung. Overexpressed in cancerous breast epithelial cell lines.

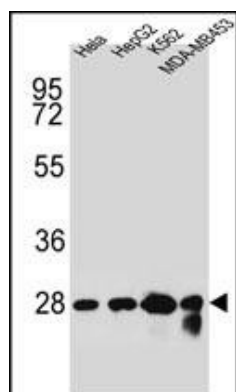
## References

Akech, J., et al. Biochem. Biophys. Res. Commun. 333(1):35-41(2005)  
 Ghosh, A., et al. Biochem. Biophys. Res. Commun. 297(4):1043-1048(2002)  
 Henneberry, A.L., et al. J. Biol. Chem. 275(38):29808-29815(2000)

## Images



CHPT1 Antibody (N-term) (Cat. #AP10186a) flow cytometric analysis of HepG2 cells (right histogram) compared to a negative control cell (left histogram). FITC-conjugated goat-anti-rabbit secondary antibodies were used for the analysis.



CHPT1 Antibody (N-term) (Cat. #AP10186a) western blot analysis in Hela, HepG2, K562, MDA-MB453 cell line lysates (35ug/lane). This demonstrates the CHPT1 antibody detected the CHPT1 protein (arrow).

Please note: All products are 'FOR RESEARCH USE ONLY. NOT FOR USE IN DIAGNOSTIC OR THERAPEUTIC PROCEDURES'.