

# SPARCL1 Antibody (Center)

Affinity Purified Rabbit Polyclonal Antibody (Pab)

Catalog # AP10208c

## Product Information

---

Application	WB, IHC-P, E
Primary Accession	<a href="#">Q14515</a>
Other Accession	<a href="#">NP_001121782.1</a> , <a href="#">NP_004675.3</a>
Reactivity	Human
Host	Rabbit
Clonality	Polyclonal
Isotype	Rabbit IgG
Calculated MW	75208
Antigen Region	208-236

## Additional Information

---

Gene ID	8404
Other Names	SPARC-like protein 1, High endothelial venule protein, Hevin, MAST 9, SPARCL1
Target/Specificity	This SPARCL1 antibody is generated from rabbits immunized with a KLH conjugated synthetic peptide between 208-236 amino acids from the Central region of human SPARCL1.
Dilution	WB~~1:1000 IHC-P~~1:100~500 E~~Use at an assay dependent concentration.
Format	Purified polyclonal antibody supplied in PBS with 0.09% (W/V) sodium azide. This antibody is purified through a protein A column, followed by peptide affinity purification.
Storage	Maintain refrigerated at 2-8°C for up to 2 weeks. For long term storage store at -20°C in small aliquots to prevent freeze-thaw cycles.
Precautions	SPARCL1 Antibody (Center) is for research use only and not for use in diagnostic or therapeutic procedures.

## Protein Information

---

Name	SPARCL1
Cellular Location	Secreted, extracellular space, extracellular matrix
Tissue Location	Highly expressed in lymph node, brain, heart, lung, skeletal muscle, ovary, small intestine, and colon, with lower levels in placenta, pancreas, testis,

spleen, and thymus, and no expression in kidney, liver, and peripheral blood leukocytes

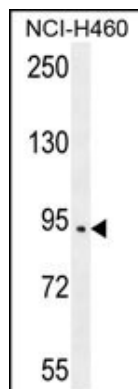
## References

---

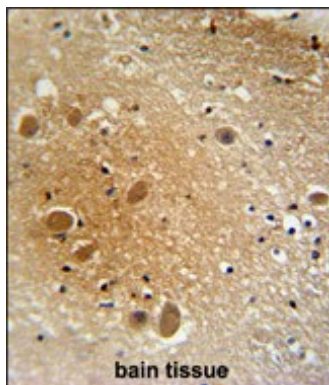
Davila, S., et al. Genes Immun. 11(3):232-238(2010)  
Wheeler, H.E., et al. PLoS Genet. 5 (10), E1000685 (2009) :  
Kahler, A.K., et al. Am. J. Med. Genet. B Neuropsychiatr. Genet. 147B (7), 1089-1100 (2008) :  
Weimer, J.M., et al. Glia 56(9):935-941(2008)  
Scalabrini, D., et al. Neurosci. Lett. 425(3):173-176(2007)

## Images

---



SPARCL1 Antibody (Center) (Cat. #AP10208c) western blot analysis in NCI-H460 cell line lysates (35ug/lane). This demonstrates the SPARCL1 antibody detected the SPARCL1 protein (arrow).



SPARCL1 antibody (Center) (Cat. #AP10208c) immunohistochemistry analysis in formalin fixed and paraffin embedded human brain tissue followed by peroxidase conjugation of the secondary antibody and DAB staining. This data demonstrates the use of the SPARCL1 antibody (Center) for immunohistochemistry. Clinical relevance has not been evaluated.

Please note: All products are 'FOR RESEARCH USE ONLY. NOT FOR USE IN DIAGNOSTIC OR THERAPEUTIC PROCEDURES'.