

# GCNT2 Antibody (C-term)

Affinity Purified Rabbit Polyclonal Antibody (Pab)  
Catalog # AP10215b

## Product Information

---

<b>Application</b>	WB, IHC-P, E
<b>Primary Accession</b>	<a href="#">Q06430</a>
<b>Other Accession</b>	<a href="#">Q8NFS9</a> , <a href="#">Q8N0V5</a> , <a href="#">NP_001482.1</a>
<b>Reactivity</b>	Human, Mouse
<b>Host</b>	Rabbit
<b>Clonality</b>	Polyclonal
<b>Isotype</b>	Rabbit IgG
<b>Clone Names</b>	RB24612
<b>Antigen Region</b>	364-391

## Additional Information

---

<b>Other Names</b>	N-acetyllactosaminide beta-1, 6-N-acetylglucosaminyl-transferase, isoform B, N-acetylglucosaminyltransferase, I-branching enzyme, IGNT, GCNT2, GCNT5, II, NACGT1
<b>Target/Specificity</b>	This GCNT2 antibody is generated from rabbits immunized with a KLH conjugated synthetic peptide between 364-391 amino acids from the C-terminal region of human GCNT2.
<b>Dilution</b>	WB~1:1000 IHC-P~1:100~500 E~~Use at an assay dependent concentration.
<b>Format</b>	Purified polyclonal antibody supplied in PBS with 0.09% (W/V) sodium azide. This antibody is purified through a protein A column, followed by peptide affinity purification.
<b>Storage</b>	Maintain refrigerated at 2-8°C for up to 2 weeks. For long term storage store at -20°C in small aliquots to prevent freeze-thaw cycles.
<b>Precautions</b>	GCNT2 Antibody (C-term) is for research use only and not for use in diagnostic or therapeutic procedures.

## Protein Information

---

### Background

---

This gene encodes the enzyme responsible for formation of the blood group I antigen. The i and I antigens are distinguished by linear and branched poly-N-acetyllactosaminoglycans, respectively. The encoded protein is the I-branching enzyme, a beta-1,6-N-acetylglucosaminyltransferase responsible for the conversion of fetal i antigen to adult I antigen in erythrocytes during embryonic development. Mutations in

this gene have been associated with adult i blood group phenotype. Alternatively spliced transcript variants encoding different isoforms have been described.

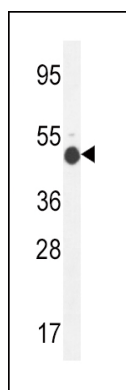
## References

---

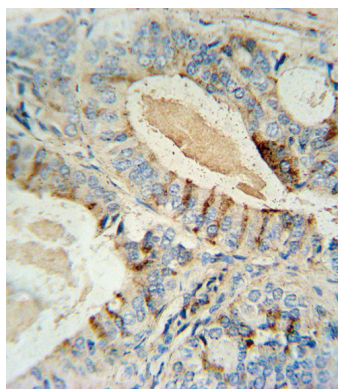
Twu, Y.C., et al. Blood 110(13):4526-4534(2007)  
Wang, L., et al. Biochem. Biophys. Res. Commun. 331(4):958-963(2005)  
Pras, E., et al. Invest. Ophthalmol. Vis. Sci. 45(6):1940-1945(2004)  
Inaba, N., et al. Blood 101(7):2870-2876(2003)  
Yu, L.C., et al. Blood 101(6):2081-2088(2003)

## Images

---



GCNT2 Antibody (C-term) (Cat. #AP10215b) western blot analysis in mouse kidney tissue lysates (35ug/lane). This demonstrates the GCNT2 antibody detected the GCNT2 protein (arrow).



GCNT2 antibody (C-term) (Cat. #AP10215b) immunohistochemistry analysis in formalin fixed and paraffin embedded human prostate carcinoma followed by peroxidase conjugation of the secondary antibody and DAB staining. This data demonstrates the use of the GCNT2 antibody (C-term) for immunohistochemistry. Clinical relevance has not been evaluated.

## Citations

---

- [Comprehensive Analysis Revealed the Potential Roles of N F18 Susceptibility in IPEC-J2 Cells](#)

Please note: All products are 'FOR RESEARCH USE ONLY. NOT FOR USE IN DIAGNOSTIC OR THERAPEUTIC PROCEDURES'.