

GTPBP2 Antibody (C-term)

Affinity Purified Rabbit Polyclonal Antibody (Pab)

Catalog # AP10220b

Product Information

Application	WB, IHC-P, FC, E
Primary Accession	Q9BX10
Other Accession	Q3UJK4 , NP_061969.3
Reactivity	Human, Hamster, Mouse
Host	Rabbit
Clonality	Polyclonal
Isotype	Rabbit IgG
Clone Names	RB24638
Calculated MW	65768
Antigen Region	536-564

Additional Information

Gene ID	54676
Other Names	GTP-binding protein 2, GTPBP2 {ECO:0000312 EMBL:CAC362691}
Target/Specificity	This GTPBP2 antibody is generated from rabbits immunized with a KLH conjugated synthetic peptide between 536-564 amino acids from the C-terminal region of human GTPBP2.
Dilution	WB~~1:1000 IHC-P~~1:100~500 FC~~1:10~50 E~~Use at an assay dependent concentration.
Format	Purified polyclonal antibody supplied in PBS with 0.09% (W/V) sodium azide. This antibody is purified through a protein A column, followed by peptide affinity purification.
Storage	Maintain refrigerated at 2-8°C for up to 2 weeks. For long term storage store at -20°C in small aliquots to prevent freeze-thaw cycles.
Precautions	GTPBP2 Antibody (C-term) is for research use only and not for use in diagnostic or therapeutic procedures.

Protein Information

Name	GTPBP2 {ECO:0000312 EMBL:CAC36269.1}
Tissue Location	Predominantly expressed in thymus, spleen, and testis. Expressed at lower levels in brain, lung, kidney, and ovary

Background

GTP-binding proteins, or G proteins, constitute a superfamily capable of binding GTP or GDP. G proteins are activated by binding GTP and are inactivated by hydrolyzing GTP to GDP. This general mechanism enables G proteins to perform a wide range of biologic activities.

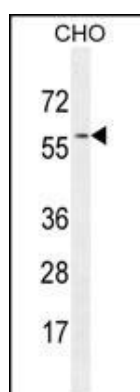
References

Mungall, A.J., et al. Nature 425(6960):805-811(2003)

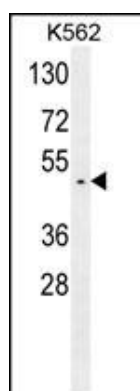
Watanabe, M., et al. Gene 256 (1-2), 51-58 (2000) :

Kudo, H., et al. Biochem. Biophys. Res. Commun. 272(2):456-465(2000)

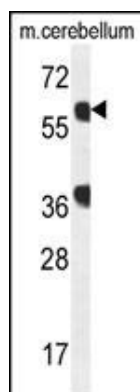
Images



GTPBP2 Antibody (C-term) (Cat. #AP10220b) western blot analysis in CHO cell line lysates (35ug/lane). This demonstrates the GTPBP2 antibody detected the GTPBP2 protein (arrow).

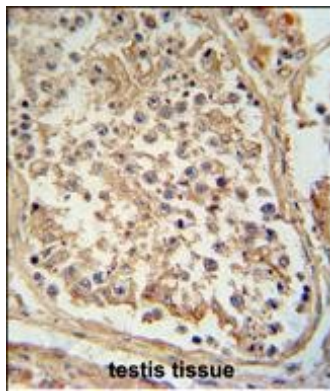


GTPBP2 Antibody (C-term) (Cat. #AP10220b) western blot analysis in K562 cell line lysates (35ug/lane). This demonstrates the GTPBP2 antibody detected the GTPBP2 protein (arrow).

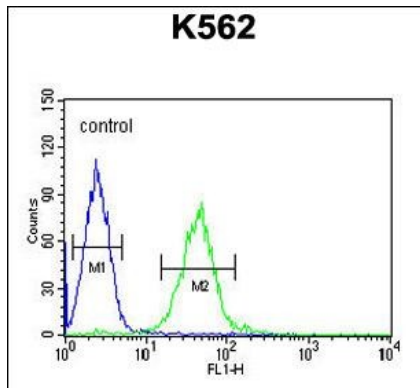


GTPBP2 Antibody (C-term) (Cat. #AP10220b) western blot analysis in mouse cerebellum tissue lysates (35ug/lane). This demonstrates the GTPBP2 antibody detected the GTPBP2 protein (arrow).

GTPBP2 antibody (C-term) (Cat. #AP10220b) immunohistochemistry analysis in formalin fixed and paraffin embedded human testis tissue followed by peroxidase conjugation of the secondary antibody and DAB staining. This data demonstrates the use of the



GTPBP2 antibody (C-term) for immunohistochemistry. Clinical relevance has not been evaluated.



GTPBP2 Antibody (C-term) (Cat. #AP10220b) flow cytometric analysis of K562 cells (right histogram) compared to a negative control cell (left histogram). FITC-conjugated goat-anti-rabbit secondary antibodies were used for the analysis.

Please note: All products are 'FOR RESEARCH USE ONLY. NOT FOR USE IN DIAGNOSTIC OR THERAPEUTIC PROCEDURES'.