

IKZF1 Antibody (C-term)

Affinity Purified Rabbit Polyclonal Antibody (Pab)

Catalog # AP10222B

Product Information

Application	WB, IHC-P, FC, E
Primary Accession	Q13422
Other Accession	NP_006051.1
Reactivity	Human
Host	Rabbit
Clonality	Polyclonal
Isotype	Rabbit IgG
Clone Names	RB24656
Calculated MW	57528
Antigen Region	415-444

Additional Information

Gene ID	10320
Other Names	DNA-binding protein Ikaros, Ikaros family zinc finger protein 1, Lymphoid transcription factor LyF-1, IKZF1, IK1, IKAROS, LYF1, ZNFN1A1
Target/Specificity	This IKZF1 antibody is generated from rabbits immunized with a KLH conjugated synthetic peptide between 415-444 amino acids from the C-terminal region of human IKZF1.
Dilution	WB~~1:1000 IHC-P~~1:100~500 FC~~1:10~50 E~~Use at an assay dependent concentration.
Format	Purified polyclonal antibody supplied in PBS with 0.09% (W/V) sodium azide. This antibody is purified through a protein A column, followed by peptide affinity purification.
Storage	Maintain refrigerated at 2-8°C for up to 2 weeks. For long term storage store at -20°C in small aliquots to prevent freeze-thaw cycles.
Precautions	IKZF1 Antibody (C-term) is for research use only and not for use in diagnostic or therapeutic procedures.

Protein Information

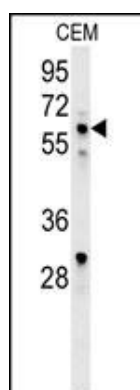
Name	IKZF1
Synonyms	IK1, IKAROS, LYF1, ZNFN1A1

Function	Transcription regulator of hematopoietic cell differentiation (PubMed: 17934067). Binds gamma-satellite DNA (PubMed: 17135265 , PubMed: 19141594). Plays a role in the development of lymphocytes, B- and T-cells. Binds and activates the enhancer (delta-A element) of the CD3-delta gene. Repressor of the TDT (fikzfterminal deoxynucleotidyltransferase) gene during thymocyte differentiation. Regulates transcription through association with both HDAC-dependent and HDAC-independent complexes. Targets the 2 chromatin-remodeling complexes, NuRD and BAF (SWI/SNF), in a single complex (PYR complex), to the beta-globin locus in adult erythrocytes. Increases normal apoptosis in adult erythroid cells. Confers early temporal competence to retinal progenitor cells (RPCs) (By similarity). Function is isoform-specific and is modulated by dominant-negative inactive isoforms (PubMed: 17135265 , PubMed: 17934067).
Cellular Location	Nucleus. Note=In resting lymphocytes, distributed diffusely throughout the nucleus. Localizes to pericentromeric heterochromatin in proliferating cells. This localization requires DNA binding which is regulated by phosphorylation / dephosphorylation events. [Isoform Ik6]: Cytoplasm.
Tissue Location	Abundantly expressed in thymus, spleen and peripheral blood Leukocytes and lymph nodes. Lower expression in bone marrow and small intestine.

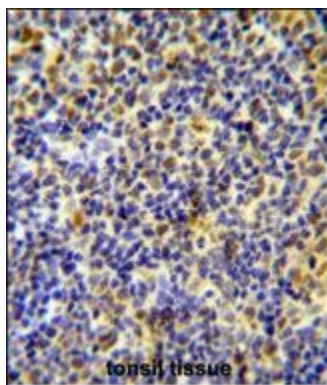
References

He, C.F., et al. Lupus 19(10):1181-1186(2010)
Yang, L., et al. Oncol. Rep. 24(2):571-577(2010)
Jager, R., et al. Leukemia 24(7):1290-1298(2010)
Kuiper, R.P., et al. Leukemia 24(7):1258-1264(2010)
Matulic, M., et al. Coll Antropol 34(1):59-62(2010)

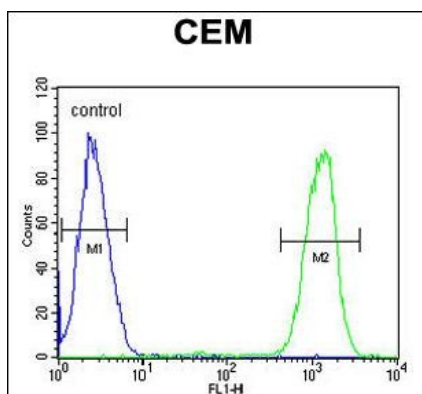
Images



IKZF1 Antibody (C-term) (Cat. #AP10222b) western blot analysis in CEM cell line lysates (35ug/lane). This demonstrates the IKZF1 antibody detected the IKZF1 protein (arrow).



IKZF1 Antibody (C-term) (Cat. #AP10222b) immunohistochemistry analysis in formalin fixed and paraffin embedded human tonsil tissue followed by peroxidase conjugation of the secondary antibody and DAB staining. This data demonstrates the use of the IKZF1 Antibody (C-term) for immunohistochemistry. Clinical relevance has not been evaluated.



IKZF1 Antibody (C-term) (Cat. #AP10222b) flow cytometric analysis of CEM cells (right histogram) compared to a negative control cell (left histogram). FITC-conjugated goat-anti-rabbit secondary antibodies were used for the analysis.

Citations

- [Activation of c-Abl kinase potentiates the anti-myeloma drug lenalidomide by promoting DDA1 recruitment to the CRL4 ubiquitin ligase.](#)

Please note: All products are 'FOR RESEARCH USE ONLY. NOT FOR USE IN DIAGNOSTIC OR THERAPEUTIC PROCEDURES'.