

# GAS2L1 Antibody (C-term)

Affinity Purified Rabbit Polyclonal Antibody (Pab)

Catalog # AP10234B

## Product Information

---

<b>Application</b>	WB, FC, E
<b>Primary Accession</b>	<a href="#">Q99501</a>
<b>Other Accession</b>	<a href="#">Q8JZP9</a> , <a href="#">NP_689422.1</a> , <a href="#">NP_689423.1</a> , <a href="#">NP_006469.2</a>
<b>Reactivity</b>	Human
<b>Predicted</b>	Mouse
<b>Host</b>	Rabbit
<b>Clonality</b>	Polyclonal
<b>Isotype</b>	Rabbit IgG
<b>Clone Names</b>	RB26772
<b>Calculated MW</b>	72717
<b>Antigen Region</b>	618-646

## Additional Information

---

<b>Gene ID</b>	10634
<b>Other Names</b>	GAS2-like protein 1, GAS2-related protein on chromosome 22, Growth arrest-specific protein 2-like 1, GAS2L1, GAR22
<b>Target/Specificity</b>	This GAS2L1 antibody is generated from rabbits immunized with a KLH conjugated synthetic peptide between 618-646 amino acids from the C-terminal region of human GAS2L1.
<b>Dilution</b>	WB~~1:1000 FC~~1:10~50 E~~Use at an assay dependent concentration.
<b>Format</b>	Purified polyclonal antibody supplied in PBS with 0.09% (W/V) sodium azide. This antibody is purified through a protein A column, followed by peptide affinity purification.
<b>Storage</b>	Maintain refrigerated at 2-8°C for up to 2 weeks. For long term storage store at -20°C in small aliquots to prevent freeze-thaw cycles.
<b>Precautions</b>	GAS2L1 Antibody (C-term) is for research use only and not for use in diagnostic or therapeutic procedures.

## Protein Information

---

<b>Name</b>	GAS2L1
<b>Synonyms</b>	GAR22

<b>Function</b>	Involved in the cross-linking of microtubules and microfilaments (PubMed: <a href="#">12584248</a> , PubMed: <a href="#">24706950</a> ). Regulates microtubule dynamics and stability by interacting with microtubule plus-end tracking proteins, such as MAPRE1, to regulate microtubule growth along actin stress fibers (PubMed: <a href="#">24706950</a> ).
<b>Cellular Location</b>	Cytoplasm, cytoskeleton. Cytoplasm, cytoskeleton, stress fiber. Note=Colocalizes with the tips of microtubule plus ends.

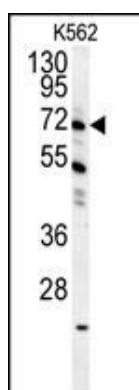
## Background

The protein encoded by this gene, a member of the GAS2 family, is similar in sequence to the mouse protein Gas2, an actin-associated protein expressed at high levels in growth-arrested cells. Expression of the mouse Gas2 gene is negatively regulated by serum and growth factors. Three transcript variants encoding two different isoforms have been found for this gene.

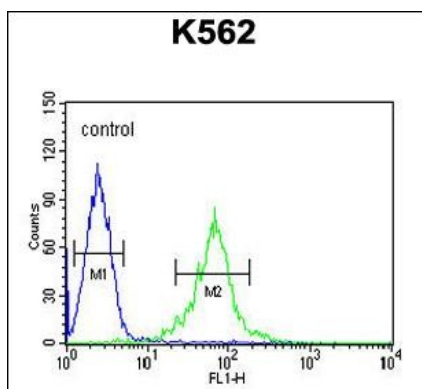
## References

Saito, A., et al. Psychiatry Res (2010) In press :  
 Gamper, I., et al. Exp. Hematol. 37(5):539-548(2009)  
 Olsen, J.V., et al. Cell 127(3):635-648(2006)  
 Olsen, J.V., et al. Cell 127(3):635-648(2006)  
 Goriounov, D., et al. J. Cell. Sci. 116 (PT 6), 1045-1058 (2003) :

## Images



GAS2L1 Antibody (C-term) (Cat. #AP10234b) western blot analysis in K562 cell line lysates (35ug/lane). This demonstrates the GAS2L1 antibody detected the GAS2L1 protein (arrow).



GAS2L1 Antibody (C-term) (Cat. #AP10234b) flow cytometric analysis of K562 cells (right histogram) compared to a negative control cell (left histogram). FITC-conjugated goat-anti-rabbit secondary antibodies were used for the analysis.

## Citations

- [GAS2-like 1 coordinates cell division through its association with end-binding proteins.](#)

Please note: All products are 'FOR RESEARCH USE ONLY. NOT FOR USE IN DIAGNOSTIC OR THERAPEUTIC PROCEDURES'.