

## CALML4 Antibody (C-term)

Affinity Purified Rabbit Polyclonal Antibody (Pab)

Catalog # AP10243b

### Product Information

---

<b>Application</b>	WB, E
<b>Primary Accession</b>	<a href="#">Q96GE6</a>
<b>Other Accession</b>	<a href="#">NP_001026903.2</a> , <a href="#">NP_219501.2</a>
<b>Reactivity</b>	Human, Mouse
<b>Host</b>	Rabbit
<b>Clonality</b>	Polyclonal
<b>Isotype</b>	Rabbit IgG
<b>Clone Names</b>	RB27179
<b>Calculated MW</b>	21883
<b>Antigen Region</b>	167-196

### Additional Information

---

<b>Gene ID</b>	91860
<b>Other Names</b>	Calmodulin-like protein 4, Serologically defined breast cancer antigen NY-BR-20, CALML4
<b>Target/Specificity</b>	This CALML4 antibody is generated from rabbits immunized with a KLH conjugated synthetic peptide between 167-196 amino acids from the C-terminal region of human CALML4.
<b>Dilution</b>	WB~~1:1000 E~~Use at an assay dependent concentration.
<b>Format</b>	Purified polyclonal antibody supplied in PBS with 0.09% (W/V) sodium azide. This antibody is purified through a protein A column, followed by peptide affinity purification.
<b>Storage</b>	Maintain refrigerated at 2-8°C for up to 2 weeks. For long term storage store at -20°C in small aliquots to prevent freeze-thaw cycles.
<b>Precautions</b>	CALML4 Antibody (C-term) is for research use only and not for use in diagnostic or therapeutic procedures.

### Protein Information

---

<b>Name</b>	CALML4 ( <a href="#">HGNC:18445</a> )
<b>Function</b>	As part of the intermicrovillar adhesion complex/IMAC plays a role in epithelial brush border differentiation, controlling microvilli organization and length. Acts as a light chain for MYO7B and is required for efficient targeting

of the IMAC to the tips of border brush microvilli.

**Cellular Location**

[Isoform 1]: Cell projection, microvillus. Note=Enriched at the distal tips of enterocyte microvilli.

**Tissue Location**

[Isoform 1]: Expressed in the intestinal tract.

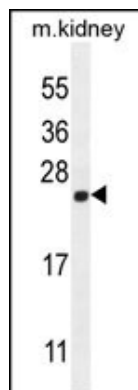
## References

---

Scanlan, M.J., et al. Cancer Immun. 1, 4 (2001) :

## Images

---



CALML4 Antibody (C-term) (Cat. #AP10243b) western blot analysis in mouse kidney tissue lysates (35ug/lane). This demonstrates the CALML4 antibody detected the CALML4 protein (arrow).

Please note: All products are 'FOR RESEARCH USE ONLY. NOT FOR USE IN DIAGNOSTIC OR THERAPEUTIC PROCEDURES'.