

L2HGDH Antibody (Center)

Affinity Purified Rabbit Polyclonal Antibody (Pab)

Catalog # AP10255c

Product Information

Application	WB, E
Primary Accession	Q9H9P8
Other Accession	NP_079160.1
Reactivity	Human, Mouse
Host	Rabbit
Clonality	Polyclonal
Isotype	Rabbit IgG
Clone Names	RB27534
Calculated MW	50316
Antigen Region	132-159

Additional Information

Gene ID	79944
Other Names	L-2-hydroxyglutarate dehydrogenase, mitochondrial, Duranin, L2HGDH, C14orf160
Target/Specificity	This L2HGDH antibody is generated from rabbits immunized with a KLH conjugated synthetic peptide between 132-159 amino acids from the Central region of human L2HGDH.
Dilution	WB~~1:1000 E~~Use at an assay dependent concentration.
Format	Purified polyclonal antibody supplied in PBS with 0.09% (W/V) sodium azide. This antibody is purified through a protein A column, followed by peptide affinity purification.
Storage	Maintain refrigerated at 2-8°C for up to 2 weeks. For long term storage store at -20°C in small aliquots to prevent freeze-thaw cycles.
Precautions	L2HGDH Antibody (Center) is for research use only and not for use in diagnostic or therapeutic procedures.

Protein Information

Name	L2HGDH
Synonyms	C14orf160
Cellular Location	Mitochondrion.

Tissue Location

Widely expressed. Highly expressed in brain, testis and muscle. Expressed to a lower extent in lymphocytes, fibroblasts, keratinocytes, placenta, bladder, small intestine, liver and bone marrow.

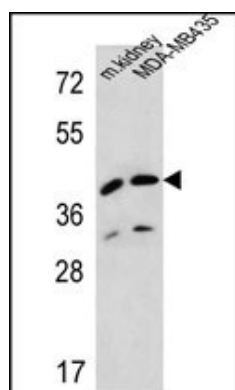
Background

This gene encodes L-2-hydroxyglutarate dehydrogenase, a FAD-dependent enzyme that oxidizes L-2-hydroxyglutarate to alpha-ketoglutarate in a variety of mammalian tissues. Mutations in this gene cause L-2-hydroxyglutaric aciduria, a rare autosomal recessive neurometabolic disorder resulting in moderate to severe mental retardation.

References

Short, A.D., et al. Vet. Rec. 167(12):455-457(2010)
Steenweg, M.E., et al. Hum. Mutat. 31(4):380-390(2010)
Kranendijk, M., et al. Hum. Mutat. 31(3):279-283(2010)
Vilarinho, L., et al. J. Hum. Genet. 55(1):55-58(2010)
Haliloglu, G., et al. Neuropediatrics 39(2):119-122(2008)

Images



L2HGDH Antibody (Center) (Cat. #AP10255c) western blot analysis in MDA-MB435 cell line and mouse kidney tissue lysates (35ug/lane). This demonstrates the L2HGDH antibody detected the L2HGDH protein (arrow).

Please note: All products are 'FOR RESEARCH USE ONLY. NOT FOR USE IN DIAGNOSTIC OR THERAPEUTIC PROCEDURES'.