

# C12orf30 Antibody (Center)

Affinity Purified Rabbit Polyclonal Antibody (Pab)

Catalog # AP10270C

## Product Information

---

<b>Application</b>	WB, E
<b>Primary Accession</b>	<a href="#">Q14CX7</a>
<b>Other Accession</b>	<a href="#">NP_079229.2</a>
<b>Reactivity</b>	Human, Mouse
<b>Host</b>	Rabbit
<b>Clonality</b>	Polyclonal
<b>Isotype</b>	Rabbit IgG
<b>Clone Names</b>	RB27630
<b>Calculated MW</b>	112292
<b>Antigen Region</b>	720-748

## Additional Information

---

<b>Gene ID</b>	80018
<b>Other Names</b>	N-alpha-acetyltransferase 25, NatB auxiliary subunit, Mitochondrial distribution and morphology protein 20, N-terminal acetyltransferase B complex subunit MDM20, NatB complex subunit MDM20, N-terminal acetyltransferase B complex subunit NAA25, p120, NAA25, C12orf30, MDM20, NAP1
<b>Target/Specificity</b>	This C12orf30 antibody is generated from rabbits immunized with a KLH conjugated synthetic peptide between 720-748 amino acids from the Central region of human C12orf30.
<b>Dilution</b>	WB~~1:1000 E~~Use at an assay dependent concentration.
<b>Format</b>	Purified polyclonal antibody supplied in PBS with 0.09% (W/V) sodium azide. This antibody is purified through a protein A column, followed by peptide affinity purification.
<b>Storage</b>	Maintain refrigerated at 2-8°C for up to 2 weeks. For long term storage store at -20°C in small aliquots to prevent freeze-thaw cycles.
<b>Precautions</b>	C12orf30 Antibody (Center) is for research use only and not for use in diagnostic or therapeutic procedures.

## Protein Information

---

<b>Name</b>	NAA25
-------------	-------

**Synonyms**

C12orf30, MDM20, NAP1

**Function**

Non-catalytic subunit of the NatB complex which catalyzes acetylation of the N-terminal methionine residues of peptides beginning with Met-Asp, Met-Glu, Met-Asn and Met-Gln. May play a role in normal cell-cycle progression.

**Cellular Location**

Cytoplasm.

**Background**

---

This gene encodes the auxiliary subunit of the heteromeric N-terminal acetyltransferase B complex. This complex acetylates methionine residues that are followed by acidic or asparagine residues.

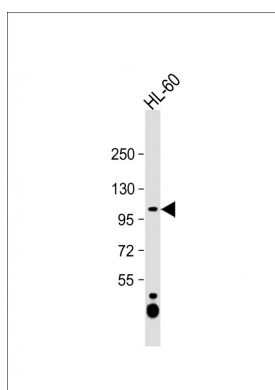
**References**

---

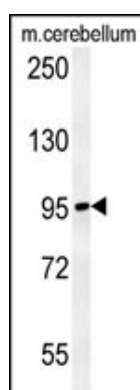
Feng, T., et al. Hum. Genet. 128(3):269-280(2010)  
Pierce, B.L., et al. Hum. Hered. 69(3):193-201(2010)  
Douroudis, K., et al. BMC Med. Genet. 11, 11 (2010) :  
Pralhad, S., et al. Arthritis Rheum. 60(7):2124-2130(2009)  
Polevoda, B., et al. BMC Proc 3 SUPPL 6, S2 (2009) :

**Images**

---



Anti-C12orf30 Antibody (Center) at 1:1000 dilution + HL-60 whole cell lysate Lysates/proteins at 20 µg per lane. Secondary Goat Anti-Rabbit IgG, (H+L), Peroxidase conjugated at 1/10000 dilution. Predicted band size : 112 kDa Blocking/Dilution buffer: 5% NFDM/TBST.



C12orf30 Antibody (Center) (Cat. #AP10270c) western blot analysis in mouse cerebellum tissue lysates (15µg/lane). This demonstrates the C12orf30 antibody detected C12orf30 protein (arrow).

**Citations**

---

- [pTSara-NatB, an improved N-terminal acetylation system for recombinant protein expression in E. coli.](#)

Please note: All products are 'FOR RESEARCH USE ONLY. NOT FOR USE IN DIAGNOSTIC OR THERAPEUTIC PROCEDURES'.