

NAT14 Antibody (N-term)

Affinity Purified Rabbit Polyclonal Antibody (Pab)

Catalog # AP10287c

Product Information

Application	IHC-P, WB, E
Primary Accession	Q8WUY8
Other Accession	Q8BVG8 , Q9N0D0 , Q3MHZ1 , NP_065111.1
Reactivity	Human
Predicted	Bovine, Monkey
Host	Rabbit
Clonality	Polyclonal
Isotype	Rabbit IgG
Clone Names	RB27764
Calculated MW	21650
Antigen Region	5-33

Additional Information

Gene ID	57106
Other Names	N-acetyltransferase 14, 231-, K562 cell-derived leucine-zipper-like protein 1, NAT14, KLP1
Target/Specificity	This NAT14 antibody is generated from rabbits immunized with a KLH conjugated synthetic peptide between 5-33 amino acids from the N-terminal region of human NAT14.
Dilution	IHC-P~~1:100~500 WB~~1:1000 E~~Use at an assay dependent concentration.
Format	Purified polyclonal antibody supplied in PBS with 0.09% (W/V) sodium azide. This antibody is purified through a protein A column, followed by peptide affinity purification.
Storage	Maintain refrigerated at 2-8°C for up to 2 weeks. For long term storage store at -20°C in small aliquots to prevent freeze-thaw cycles.
Precautions	NAT14 Antibody (N-term) is for research use only and not for use in diagnostic or therapeutic procedures.

Protein Information

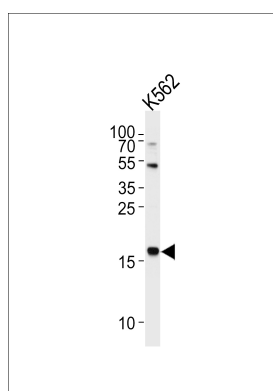
Name	NAT14
Synonyms	KLP1

Function	Probable acetyltransferase.
Cellular Location	Membrane; Single-pass membrane protein
Tissue Location	Expressed in K-562 and HeLa cell lines and in brain.

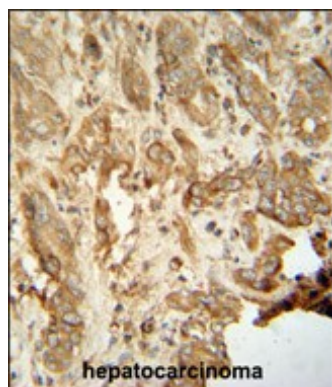
References

Wiame, E., et al. Biochem. J. 425(1):127-136(2010)
Lamesch, P., et al. Genomics 89(3):307-315(2007)
Oh, J.H., et al. Mamm. Genome 16(12):942-954(2005)
Takahashi, S., et al. Biochim. Biophys. Acta 1522(3):207-211(2001)
Takahashi, S., et al. Biochem. Biophys. Res. Commun. 273(2):596-602(2000)

Images



Western blot analysis of lysate from K562 cell line, using NAT14 Antibody (N-term)(Cat. #AP10287c). AP10287c was diluted at 1:1000 at each lane. A goat anti-rabbit IgG H&L(HRP) at 1:5000 dilution was used as the secondary antibody. Lysate at 35ug per lane.



NAT14 antibody (N-term) (Cat. #AP10287c) immunohistochemistry analysis in formalin fixed and paraffin embedded human hepatocarcinoma followed by peroxidase conjugation of the secondary antibody and DAB staining. This data demonstrates the use of the NAT14 antibody (N-term) for immunohistochemistry. Clinical relevance has not been evaluated.

Please note: All products are 'FOR RESEARCH USE ONLY. NOT FOR USE IN DIAGNOSTIC OR THERAPEUTIC PROCEDURES'.