

SYT8 Antibody (Center)

Affinity Purified Rabbit Polyclonal Antibody (Pab)

Catalog # AP10354c

Product Information

Application	WB, IHC-P, E
Primary Accession	Q8NBV8
Other Accession	NP_612634.3
Reactivity	Human, Mouse
Host	Rabbit
Clonality	Polyclonal
Isotype	Rabbit IgG
Clone Names	RB27957
Calculated MW	42433
Antigen Region	60-88

Additional Information

Gene ID	90019
Other Names	Synaptotagmin-8, Synaptotagmin VIII, SytVIII, SYT8
Target/Specificity	This SYT8 antibody is generated from rabbits immunized with a KLH conjugated synthetic peptide between 60-88 amino acids from the Central region of human SYT8.
Dilution	WB~~1:1000 IHC-P~~1:100~500 E~~Use at an assay dependent concentration.
Format	Purified polyclonal antibody supplied in PBS with 0.09% (W/V) sodium azide. This antibody is purified through a protein A column, followed by peptide affinity purification.
Storage	Maintain refrigerated at 2-8°C for up to 2 weeks. For long term storage store at -20°C in small aliquots to prevent freeze-thaw cycles.
Precautions	SYT8 Antibody (Center) is for research use only and not for use in diagnostic or therapeutic procedures.

Protein Information

Name	SYT8
Function	Involved in the trafficking and exocytosis of secretory vesicles in non-neuronal tissues. Mediates Ca(2+)-regulation of exocytosis across reaction in sperm. May mediate Ca(2+)-regulation of exocytosis in insulin secreted cells.

Cellular Location

Cell membrane; Single-pass type III membrane protein. Cytoplasmic vesicle, secretory vesicle, acrosome {ECO:0000250 | UniProtKB:Q9R0N6}

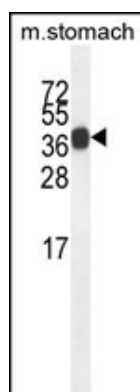
Background

Synaptotagmins, such as SYT8, share a common domain structure that includes a transmembrane domain and a cytoplasmic region composed of 2 C2 domains. Some synaptotagmins are involved in synaptic membrane fusion, while others have a more general function in endocytosis. For further information on synaptotagmins, see MIM 185605.

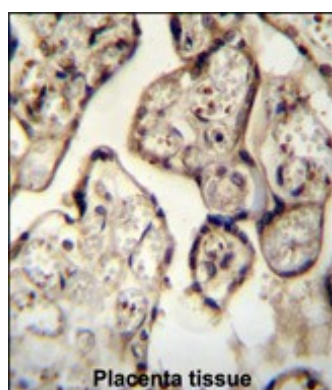
References

Bailey, S.D., et al. Diabetes Care (2010) In press :
Rose, J.E., et al. Mol. Med. 16 (7-8), 247-253 (2010) :
Talmud, P.J., et al. Am. J. Hum. Genet. 85(5):628-642(2009)
Li, C., et al. Nature 375(6532):594-599(1995)

Images



SYT8 Antibody (Center) (Cat. #AP10354c) western blot analysis in mouse stomach tissue lysates (35ug/lane). This demonstrates the SYT8 antibody detected the SYT8 protein (arrow).



SYT8 antibody (Center) (Cat. #AP10354c) immunohistochemistry analysis in formalin fixed and paraffin embedded human Placenta tissue followed by peroxidase conjugation of the secondary antibody and DAB staining. This data demonstrates the use of the SYT8 antibody (Center) for immunohistochemistry. Clinical relevance has not been evaluated.

Please note: All products are 'FOR RESEARCH USE ONLY. NOT FOR USE IN DIAGNOSTIC OR THERAPEUTIC PROCEDURES'.