

HHIPL2 Antibody (Center)

Affinity Purified Rabbit Polyclonal Antibody (Pab)

Catalog # AP10367c

Product Information

Application	WB, IHC-P, E
Primary Accession	Q6UWX4
Other Accession	NP_079022.2
Reactivity	Human, Rat, Mouse
Host	Rabbit
Clonality	Polyclonal
Isotype	Rabbit IgG
Clone Names	RB27990
Calculated MW	80779
Antigen Region	290-318

Additional Information

Gene ID	79802
Other Names	HHIP-like protein 2, HHIPL2, HHIP3, KIAA1822L
Target/Specificity	This HHIPL2 antibody is generated from rabbits immunized with a KLH conjugated synthetic peptide between 290-318 amino acids from the Central region of human HHIPL2.
Dilution	WB~~1:1000 IHC-P~~1:100~500 E~~Use at an assay dependent concentration.
Format	Purified polyclonal antibody supplied in PBS with 0.05% (V/V) Proclin 300. This antibody is prepared by Saturated Ammonium Sulfate (SAS) precipitation followed by dialysis against PBS.
Storage	Maintain refrigerated at 2-8°C for up to 2 weeks. For long term storage store at -20°C in small aliquots to prevent freeze-thaw cycles.
Precautions	HHIPL2 Antibody (Center) is for research use only and not for use in diagnostic or therapeutic procedures.

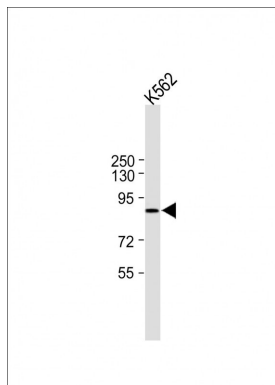
Protein Information

Name	HHIPL2
Synonyms	HHIP3, KIAA1822L
Cellular Location	Secreted.

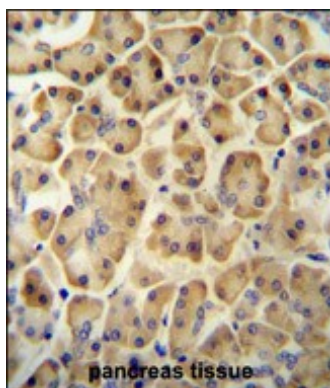
References

Rose, J. Phd, et al. Mol. Med. (2010) In press :
Clark, H.F., et al. Genome Res. 13(10):2265-2270(2003)
Venter, J.C., et al. Science 291(5507):1304-1351(2001)

Images



All lanes : Anti-HHIPL2 Antibody (Center) at 1:1000 dilution Lane 1: K562 whole cell lysate Lysates/proteins at 20 µg per lane. Secondary Goat Anti-Rabbit IgG, (H+L), Peroxidase conjugated (ASP1615) at 1/15000 dilution. Observed band size : 85kDa Blocking/Dilution buffer: 5% NFDM/TBST.



HHIPL2 antibody (Center) (Cat. #AP10367c) immunohistochemistry analysis in formalin fixed and paraffin embedded human pancreas tissue followed by peroxidase conjugation of the secondary antibody and DAB staining. This data demonstrates the use of the HHIPL2 antibody (Center) for immunohistochemistry. Clinical relevance has not been evaluated.

Please note: All products are 'FOR RESEARCH USE ONLY. NOT FOR USE IN DIAGNOSTIC OR THERAPEUTIC PROCEDURES'.