

EFTUD1 Antibody (C-term)

Affinity Purified Rabbit Polyclonal Antibody (Pab)

Catalog # AP10373b

Product Information

Application	WB, IHC-P, FC, E
Primary Accession	Q7Z2Z2
Other Accession	Q8C0D5 , NP_078856.4 , NP_001035700.1
Reactivity	Human, Mouse
Host	Rabbit
Clonality	Polyclonal
Isotype	Rabbit IgG
Clone Names	RB28025
Calculated MW	125430
Antigen Region	1062-1090

Additional Information

Gene ID	79631
Other Names	Elongation factor Tu GTP-binding domain-containing protein 1, Elongation factor-like 1, Protein FAM42A, EFTUD1, EFL1, FAM42A
Target/Specificity	This EFTUD1 antibody is generated from rabbits immunized with a KLH conjugated synthetic peptide between 1062-1090 amino acids from the C-terminal region of human EFTUD1.
Dilution	WB~~1:1000 IHC-P~~1:100~500 FC~~1:10~50 E~~Use at an assay dependent concentration.
Format	Purified polyclonal antibody supplied in PBS with 0.09% (W/V) sodium azide. This antibody is purified through a protein A column, followed by peptide affinity purification.
Storage	Maintain refrigerated at 2-8°C for up to 2 weeks. For long term storage store at -20°C in small aliquots to prevent freeze-thaw cycles.
Precautions	EFTUD1 Antibody (C-term) is for research use only and not for use in diagnostic or therapeutic procedures.

Protein Information

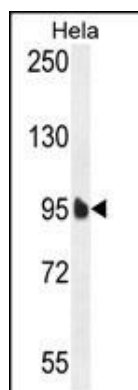
Name	EFL1 (HGNC:25789)
Synonyms	EFTUD1, FAM42A

Function	GTPase involved in the biogenesis of the 60S ribosomal subunit and translational activation of ribosomes. Together with SBDS, triggers the GTP-dependent release of EIF6 from 60S pre-ribosomes in the cytoplasm, thereby activating ribosomes for translation competence by allowing 80S ribosome assembly and facilitating EIF6 recycling to the nucleus, where it is required for 60S rRNA processing and nuclear export.
Tissue Location	Expressed at low levels in brain. Expression is highly increased in glioma tissues.

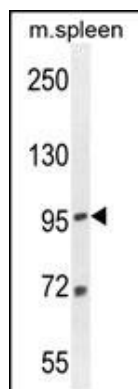
References

Nicolas, E., et al. Eur. J. Hum. Genet. 18(10):1107-1113(2010)
 Willer, C.J., et al. Nat. Genet. 41(1):25-34(2009)
 Harrington, J.J., et al. Nat. Biotechnol. 19(5):440-445(2001)

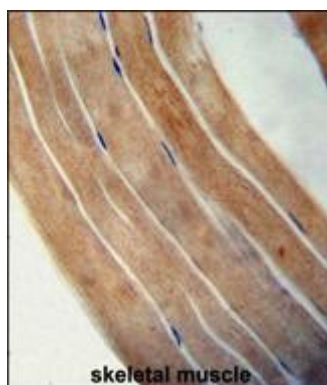
Images



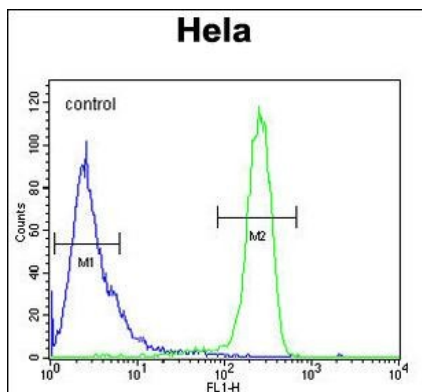
EFTUD1 Antibody (C-term) (Cat. #AP10373b) western blot analysis in HeLa cell line lysates (35ug/lane). This demonstrates the EFTUD1 antibody detected the EFTUD1 protein (arrow).



EFTUD1 Antibody (C-term) (Cat. #AP10373b) western blot analysis in mouse spleen tissue lysates (35ug/lane). This demonstrates the EFTUD1 antibody detected the EFTUD1 protein (arrow).



EFTUD1 antibody (C-term) (Cat. #AP10373b) immunohistochemistry analysis in formalin fixed and paraffin embedded human skeletal muscle followed by peroxidase conjugation of the secondary antibody and DAB staining. This data demonstrates the use of the EFTUD1 antibody (C-term) for immunohistochemistry. Clinical relevance has not been evaluated.



EFTUD1 Antibody (C-term) (Cat. #AP10373b) flow cytometric analysis of Hela cells (right histogram) compared to a negative control cell (left histogram). FITC-conjugated goat-anti-rabbit secondary antibodies were used for the analysis.

Please note: All products are 'FOR RESEARCH USE ONLY. NOT FOR USE IN DIAGNOSTIC OR THERAPEUTIC PROCEDURES'.