

TINAGL1 Antibody (C-term)

Affinity Purified Rabbit Polyclonal Antibody (Pab)

Catalog # AP10392b

Product Information

Application	WB, E
Primary Accession	Q9GZM7
Other Accession	NP_071447.1
Reactivity	Human, Mouse
Host	Rabbit
Clonality	Polyclonal
Isotype	Rabbit IgG
Clone Names	RB28086
Calculated MW	52387
Antigen Region	370-398

Additional Information

Gene ID	64129
Other Names	Tubulointerstitial nephritis antigen-like, Glucocorticoid-inducible protein 5, Oxidized LDL-responsive gene 2 protein, OLRG-2, Tubulointerstitial nephritis antigen-related protein, TIN Ag-related protein, TIN-Ag-RP, TINAGL1, GIS5, LCN7, OLRG2, TINAGL
Target/Specificity	This TINAGL1 antibody is generated from rabbits immunized with a KLH conjugated synthetic peptide between 370-398 amino acids from the C-terminal region of human TINAGL1.
Dilution	WB~~1:1000 E~~Use at an assay dependent concentration.
Format	Purified polyclonal antibody supplied in PBS with 0.05% (V/V) Proclin 300. This antibody is purified through a protein A column, followed by peptide affinity purification.
Storage	Maintain refrigerated at 2-8°C for up to 2 weeks. For long term storage store at -20°C in small aliquots to prevent freeze-thaw cycles.
Precautions	TINAGL1 Antibody (C-term) is for research use only and not for use in diagnostic or therapeutic procedures.

Protein Information

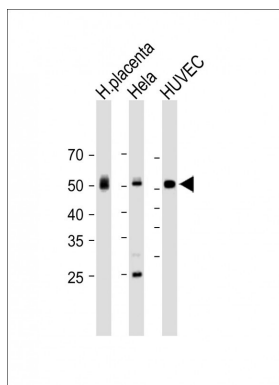
Name	TINAGL1
Synonyms	GIS5, LCN7, OLRG2, TINAGL

Function	May be implicated in the adrenocortical zonation and in mechanisms for repressing the CYP11B1 gene expression in adrenocortical cells. This is a non catalytic peptidase C1 family protein (By similarity).
Cellular Location	Secreted
Tissue Location	Highly expressed in aorta, heart, placenta, kidney and a colorectal adenocarcinoma cell line. Moderately expressed in skeletal muscle, pancreas, lung, lymph nodes, adrenal gland, bone marrow and thyroid. Weakly expressed in colon, small intestine, ovary, spleen, testis and prostate. Predominantly found in vascular smooth muscle cells, but also in cardiac and skeletal muscle cells as well as kidney.

References

Wan, D., et al. Proc. Natl. Acad. Sci. U.S.A. 101(44):15724-15729(2004)
Zhang, Z., et al. Protein Sci. 13(10):2819-2824(2004)
Colland, F., et al. Genome Res. 14(7):1324-1332(2004)
Clark, H.F., et al. Genome Res. 13(10):2265-2270(2003)
Jiang, L.Q., et al. Hypertens. Res. 25(4):647-652(2002)

Images



All lanes: Anti-TINAGL1 Antibody (C-term) at 1:2000 dilution
Lane 1: Human placenta lysate
Lane 2: HeLa whole cell lysate
Lane 3: HUVEC whole cell lysate
Lysates/proteins at 20 µg per lane. Secondary: Goat Anti-Rabbit IgG, (H+L), Peroxidase conjugated (ASP1615) at 1/15000 dilution. Observed band size: 52 KDa
Blocking/Dilution buffer: 5% NFDM/TBST.

Please note: All products are 'FOR RESEARCH USE ONLY. NOT FOR USE IN DIAGNOSTIC OR THERAPEUTIC PROCEDURES'.